



Symonds
& Sampson

The Chestnut

Foundry Lea, Bridport, Dorset

The Chestnut

Foundry Lea
Bridport
Dorset DT6 5JR

An attractive double-fronted new build house with plots now available from April 2026.



- Show home now available
- Single garage and parking
- Four bedrooms, including principal bedroom with ensuite
- Edge of town location
 - Enclosed garden
 - PV panels

Guide Price **£489,995**

Freehold

Bridport Sales
01308 422092
bridport@symondsandsampson.co.uk



INTRODUCTION

Foundry Lea is a new development situated close to Bridport town and the stunning Jurassic Coast, comprising of homes embracing contemporary design, while retaining classic architecture and traditional build quality. The Chestnut is an impressive four bedroom detached house with eco credentials in mind with PV panels and an enclosed garden and parking.

THE PROPERTY

The property is conventionally arranged around an entrance hallway with a cloakroom. The kitchen/dining room is to one side spanning the full depth of the house with bi-fold doors onto the garden. There is a separate living room with French doors onto the garden, and a study/playroom. Upstairs are four bedrooms, the principal of which having an ensuite shower room with the other rooms being served by a family bathroom.

The purchasers will have a choice of standard fitted kitchens and sanitaryware^. Please contact the office for further information. The property will include a NHBC 10-year warranty.

SERVICES

Mains gas, electricity water and drainage. Gas fired central heating. PV panels.

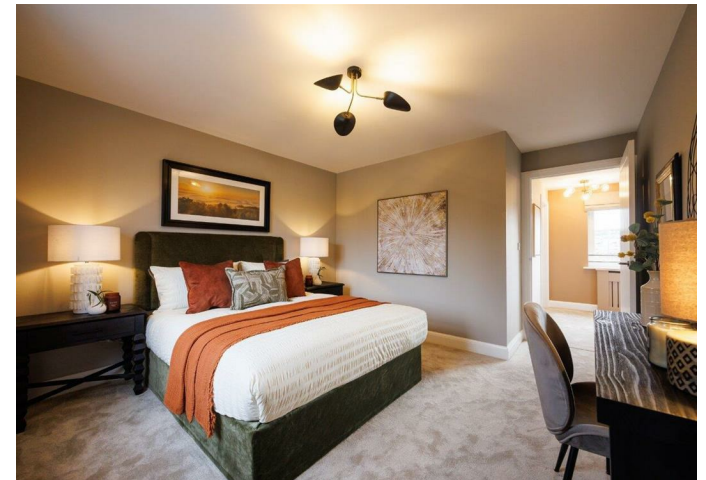
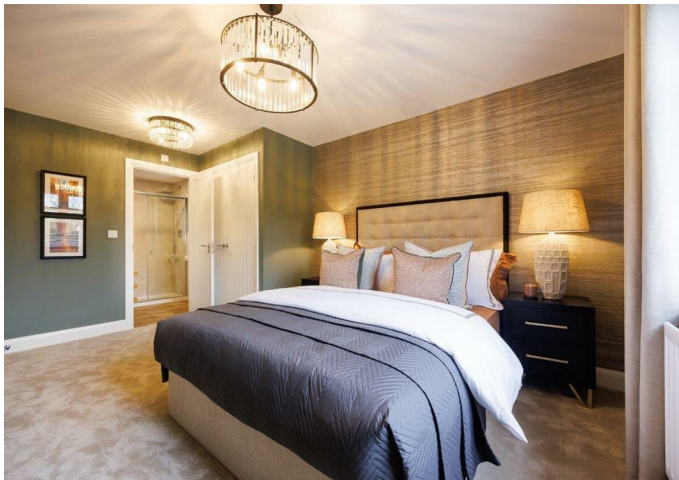
Dorset Council Tel: 01305 251010.
Council Tax – New build, awaiting banding.

SITUATION

The property is situated on the Western side of Bridport in a brand new development. Bridport is a bustling market town and is close to the World Heritage Jurassic coastline. It has a variety of independent shops, supermarkets, public houses and restaurants catering for a range of tastes and excellent arts and music events. West Bay has its harbour and beaches and a variety of small businesses catering for everyday needs. Bridport is conveniently placed for Dorchester and Weymouth to the east and Axminster to the west.

MATERIAL INFORMATION

The drawings and particulars are for illustrative purposes only and shall not form part of any contract. Example images on the brochure are from a typical show home.





Ground Floor
 Kitchen 4.05m x 3.05m
 Dining/Family Area 4.60m x 2.83m
 Sitting Room 4.98m x 3.41m
 Study 3.41m x 1.81m

First Floor
 Bedroom 1 3.24m x 2.98m
 Bedroom 2 3.44m x 3.37m
 Bedroom 3 3.42m x 2.31m
 Bedroom 4 3.21m x 2.35m



Bridport/DME27032026REV



01308 422092

bridport@symondsandsampson.co.uk
 Symonds & Sampson LLP
 23, South Street,
 Bridport, Dorset DT6 3NU



Important Notice: Symonds & Sampson LLP and their Clients give notice that: 1. They have no authority to make or give any representations or warranties in relation to the property. These particulars do not form part of any offer or contract and must not be relied upon as statements or representations of fact. 2. Any areas, measurements or distances are approximate. The text, photographs and plans are for guidance only and are not necessarily comprehensive. It should not be assumed that the properties have all necessary planning, building regulation or other consents and Symonds and Sampson LLP have not tested any services, equipment of facilities. 3. We have not made any investigation into the existence or otherwise of any issues concerning pollution of the land, air or water contamination and the purchaser is responsible for making his/her own enquiries in this regard. 4. The property is sold subject to and with the benefit of all existing wayleaves, easements and rights of way whether public or private, specifically mentioned or not. The vendors shall not be required to define any such rights, privileges or advantages.

SALES | LETTINGS | AUCTIONS | FARMS & LAND | COMMERCIAL | NEW HOMES | PLANNING & DEVELOPMENT