



East Dulwich Road, SE22

£375,000

A beautifully presented one bedroom Victorian conversion, positioned on the ever popular East Dulwich Road in the heart of SE22. Set within an attractive period building, the property offers a bright and well balanced layout with an abundance of natural light throughout.

The accommodation comprises a spacious reception room, separate fitted kitchen, generous double bedroom and a well appointed bathroom. Characterful features combined with modern finishes create a comfortable and stylish living environment, ideal for first time buyers, professionals or investors alike.

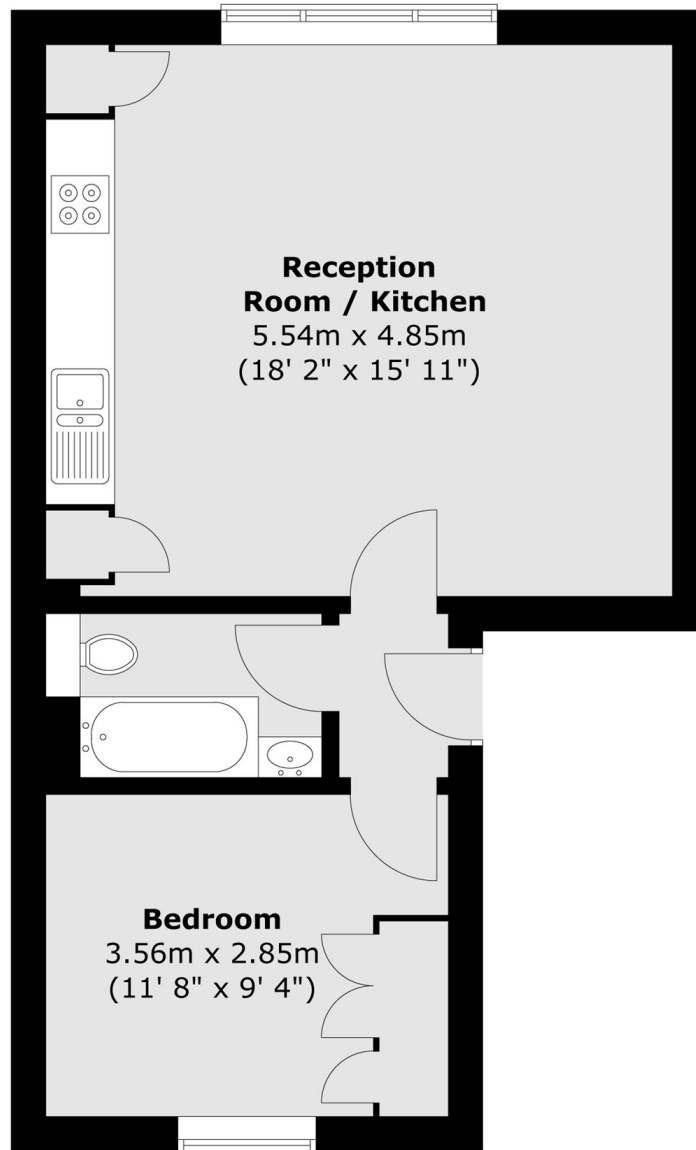
East Dulwich Road is perfectly positioned for the independent cafés, restaurants and boutiques of Lordship Lane, while the green open spaces of Peckham Rye Park and Dulwich Park are both within easy reach. Excellent transport links are available from East Dulwich and Peckham Rye stations, providing convenient access into London

Features

- One Bedroom Apartment
- Victorian Conversion
- 468 Square Foot
- Chain Free
- Modern Finish
- Close To Peckham Rye and East Dulwich Stations

East Dulwich Road, London, SE22

First Floor



Total area (approx.) : 43.5 sq. m (468 sq. ft)