



## Palmers Road, E2

### £3,150 PCM

A modern large one bedroom mezzanine apartment set over 900 Sq ft in a secure development. This apartment has a large open plan kitchen and reception room with a good sized private terrace overlooking the canal. There is a large main bedroom and bathroom and also a further mezzanine area which can be used as a study and overlooks the reception and a secondary WC. The property is available furnished.

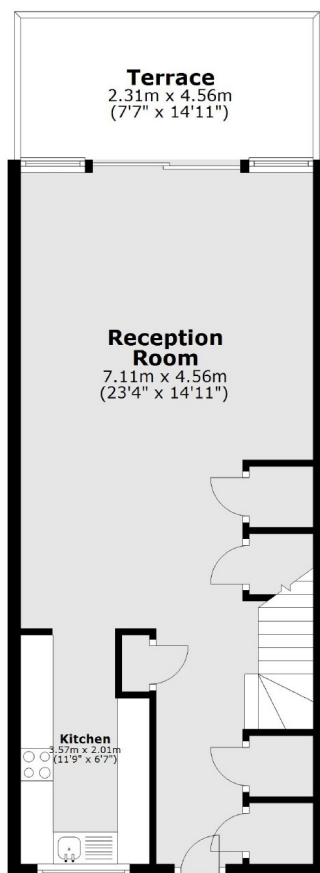
Palmers Road is just off Roman Road and only a half mile from Bethnal Green station. Directly opposite the Ecological Park and Regents Canal there is plenty of opportunity for keen walkers.

### Features

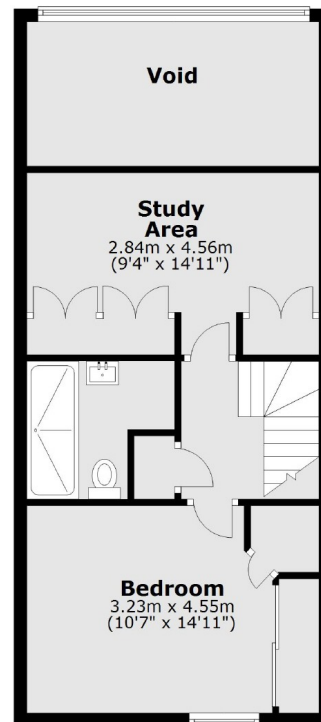
Canalside Apartment  
Private Terrace  
941 Sq ft  
Mezzanine  
Furnished  
Modern

# Palmers Road, London, E2

## First Floor



## Second Floor



Main area: Approx. 87.5 sq. metres (941.6 sq. feet)  
Plus balconies, approx. 10.5 sq. metres (113.2 sq. feet)

# Dexters

Shoreditch  
44 Great Eastern Street  
London  
EC2A 3EP  
Sales  
0207 483 6371

Energy Rating: C. We aim to make our particulars both accurate and reliable. However they are not guaranteed; nor do they form part of an offer or contract. If you require clarification on any points then please contact us, especially if you're traveling some distance to view. Please note that appliances and heating systems have not been tested and therefore no warranties can be given as to their good working order.

 **RICS** | Regulated  
Estate Agent  
and Letting Agent

dexters.co.uk