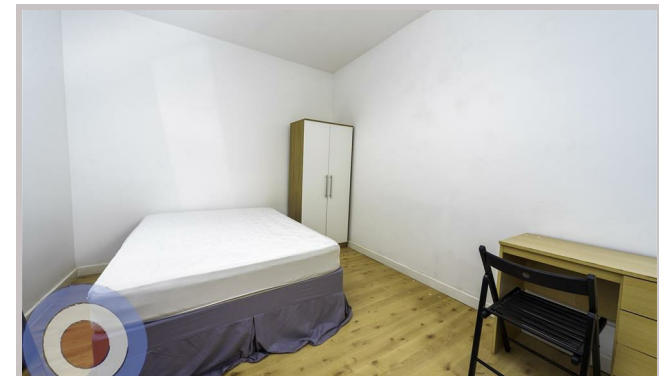




39 Derby Road
Manchester
M14 6UX



39 Derby Road

£736 Per month

STUDENT PROPERTY AVAILABLE ON 01/07/26

This spacious 6-bedroom period semi-detached house is perfectly located in central Fallowfield, close to local amenities and with excellent bus links to the university and city centre.

All six bedrooms are large doubles, complemented by two bathrooms. The rear of the house features an open-plan living space filled with natural light, ideal for socialising or relaxing. Additional benefits include off-road parking, no deposit required, all bills included, and communal cleaning provided throughout the tenancy.

- NO DEPOSIT
- ALL BILLS INCLUDED
- COMMUNAL CLEANING INCLUDED
- ALL DOUBLE BEDROOMS
- ENERGY EFFICIENT HOUSE C OR ABOVE
- OFF ROAD PARKING

Local Authority
Manchester City Council

Council Tax Band Exempt

EPC Rating C

Contact

01613992619

hello@welcometomanchesterlettings.com

www.welcometomanchesterlettings.com

