



Chrisp Street, E14

£588 Per week

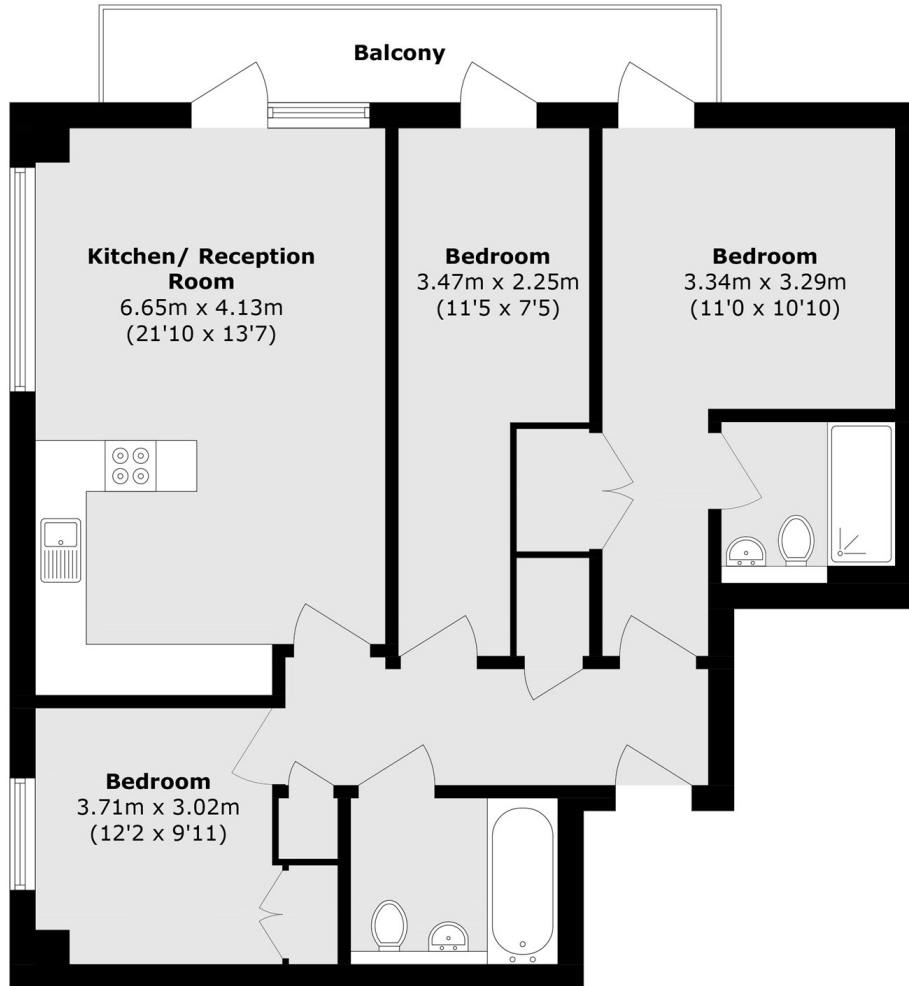
A well-proportioned three bedroom apartment with an open plan reception, wood flooring and private balcony. Boasting two bathrooms, bright, inviting spaces and an integrated kitchen.

Parkview Apartments is located within 0.1 miles of Langdon Park DLR service, in addition to being within a brief walk of the attractive amenities of central Canary Wharf.

Features

- Three Bedrooms
- Two Bathrooms
- Open Plan Reception
- Wood Flooring
- Furnished
- Private Balcony

Chrisp Street,
London, E14



Total area (approx.): 86.0 sq. m (925.7 sq. ft)
Excluding Balcony