



OFFERS OVER

£99,000

Millar Street
Strathaven, ML10 6TD

PROPERTY SUMMARY

Located within the picturesque village of Glassford nearby to the larger market town of Strathaven is this traditional, beautifully presented, two-bedroom, upper flat. Constructed circa 1890 this lovely property offers the perfect blend of period charm and stylish and spacious accommodation in a pretty semi-rural setting.

The immaculately maintained layout of apartments comprises; communal close entrance, curved stairwell leading the property, welcoming reception hallway with excellent storage and useful utility cupboard. Stunning modern fitted kitchen with integrated appliances, open plan to generous front facing lounge.

Continuing the well-proportioned accommodation is two, double bedrooms both with fitted storage, and a modern, three-piece bathroom with over-bath shower.

This deceptively spacious flat further benefits from gas central heating, double glazing, programme of fresh, contemporary decor throughout, and considerable attic space. The pleasant gardens offer a wonderful space to relax and enjoy with excellent views across the surrounding countryside.

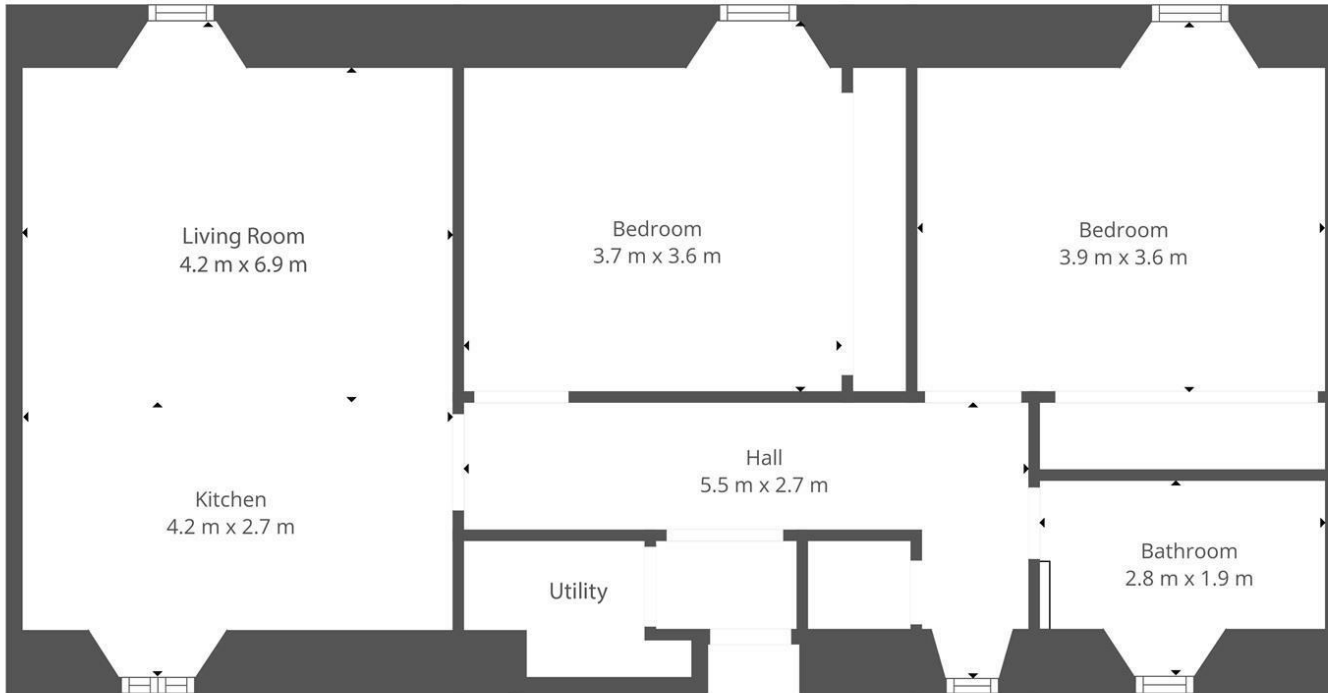
2











LOCAL AUTHORITY

South Lanarkshire

TENURE

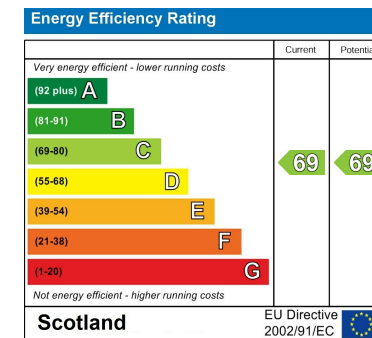
Freehold

COUNCIL TAX BAND

B

VIEWINGS

By prior appointment only



Agents Note: Whilst every care has been taken to prepare these particulars, they are for guidance purposes only. All measurements are approximate and are for general guidance purposes only and whilst every care has been taken to ensure their accuracy, they should not be relied upon and potential buyers/tenants are advised to recheck the measurements



This Floorplan Is Intended To Give An Indication Of The Layout Only.



OFFICE ADDRESS
 9 Townhead Street
 Strathaven
 ML10 6AB

OFFICE DETAILS
 01357 510088
 judithmcgill@cruive-
 estateagents.co.uk