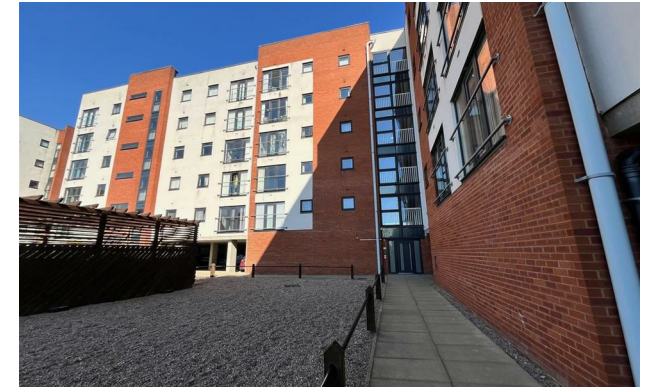






## Ladywell Point A Salford M50 1AZ

£1,150 Per Calendar Month



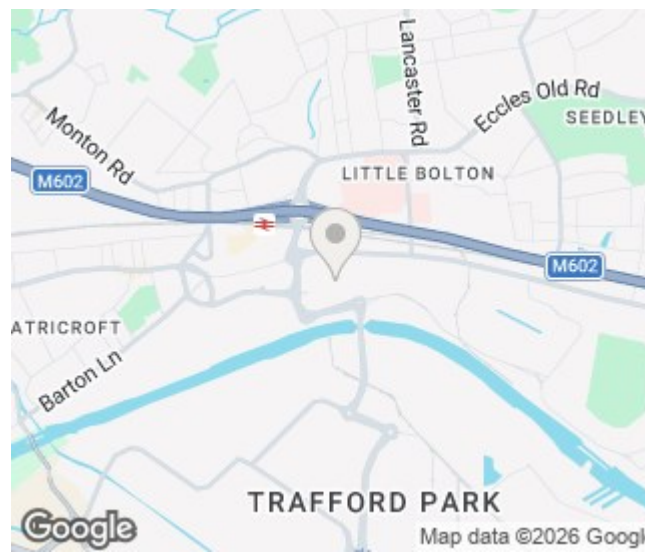
### The Property

Available Late May. Jordan Fishwick presents this spacious 3rd floor, two double bedroom apartment located in Ladywell Point, just off Eccles New Road in Salford. The apartment offers an ideal location close to Ladywell tram stop providing links to the City Centre, as well as the Trafford Centre and M602 motorway. The property in comprises of spacious living area with Juliet balcony, stylish gloss kitchen fitted with wall and base units, oven, hob and fridge/freezer. Master bedroom with en-suite and second double bedroom. The property is fully furnished. Gated parking. Council Tax Band B. EPC Rating C. Professionals Only.

REPOSIT (Nil Deposit Option) Available for this property.

**\*VIDEO/ PHOTO OFFERS NOT ACCEPTED - PLEASE CALL TO BOOK A VIEWING\***

- Available Late May
- 3rd Floor Apartment
- Furnished
- Two bedrooms & Two Bathrooms
- Tax Band B
- EPC Rating C
- Parking included
- Close to Tram Stop
- Close to Media City



Energy Efficiency Rating		
	Current	Potential
Very energy efficient - lower running costs		
(92 plus) <b>A</b>		
(81-91) <b>B</b>		<b>86</b>
(69-80) <b>C</b>	<b>74</b>	
(55-68) <b>D</b>		
(39-54) <b>E</b>		
(21-38) <b>F</b>		
(1-20) <b>G</b>		
Not energy efficient - higher running costs		
<b>England &amp; Wales</b>	EU Directive 2002/91/EC	





These particulars are believed to be accurate but they are not guaranteed and do not form a contract. Neither Jordan Fishwick nor the vendor or lessor accept any responsibility in respect of these particulars, which are not intended to be statements or representations of fact and any intending purchaser or lessee must satisfy himself by inspection or otherwise as to the correctness of each of the statements contained in these particulars. Any floorplans on this brochure are for illustrative purposes only and are not necessarily to scale.

Offices at: Offices at Chorlton, Didsbury, Disley, Hale, Glossop, Macclesfield, Manchester Deansgate, Manchester Whitworth Street, New Mills, Sale, Wilmslow and Withington