



**Melford Drive, Prenton, CH43 3EX**

**welcome to**

**Melford Drive, Prenton**

A charming one-bedroom home in Prenton with lounge, kitchen, bathroom, and bedroom. Features a wrap-around front garden and is close to local amenities, top schools, and excellent transport links to Liverpool and Chester.



## Auctioneer's Comments

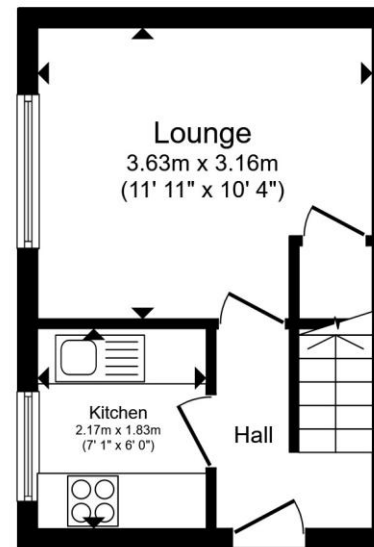
This property is offered through Modern Method of Auction. Should you view, offer or bid your data will be shared with the Auctioneer, iamsold Limited. This method requires both parties to complete the transaction within 56 days, allowing buyers to proceed with mortgage finance (subject to lending criteria, affordability and survey). The buyer is required to sign a reservation agreement and make payment of a non-refundable Reservation Fee of 4.5% of the purchase price including VAT, subject to a minimum of £6600.00 including VAT. This fee is paid in addition to purchase price and will be considered as part of the chargeable consideration for the property in the calculation for stamp duty liability. Buyers will be required to complete an identification process with iamsold and provide proof of how the purchase would be funded. The property has a Buyer Information Pack containing documents about the property. The documents may not tell you everything you need to know, so you must complete your own due diligence before bidding. A sample of the Reservation Agreement and terms and conditions are contained within this pack. The buyer will also make payment of no more than £349 inc. VAT towards the preparation cost of the pack. Please confirm exact costs with the auctioneer. The estate agent and auctioneer may recommend the services of other providers to you, in which they will be paid for the referral. These services are optional, and you will be advised of any payment, in writing before any services are accepted. Listing is subject to a start price and undisclosed reserve price that can change.

## Property Description

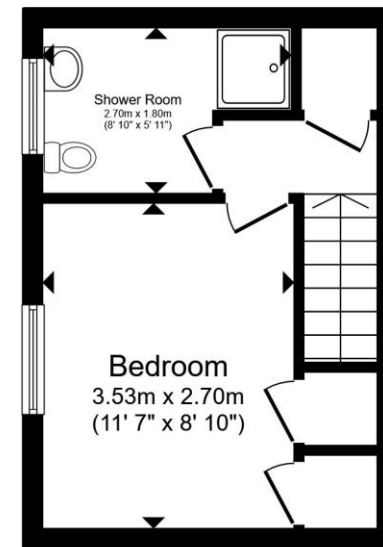
Welcome to Melford Drive, a charming one-bedroom home nestled in the heart of Prenton. Perfect for first-time buyers, downsizers, or those seeking a peaceful retreat, this property offers a delightful blend of comfort and convenience. Step inside to find a bright and airy lounge, a well-appointed kitchen, and a modern bathroom, all complemented by a spacious bedroom designed for relaxation. Outside, the home truly shines: a wrap-around front garden adds curb appeal, Location is everything, and here you're spoiled for choice. Within easy reach are local shops, supermarkets, and eateries, plus Arrowe Park Hospital just a mile away for peace of mind. Families will appreciate the excellent school



**view this property online** [jonesandchapman.co.uk/Property/PTN116355](https://jonesandchapman.co.uk/Property/PTN116355)



**Ground Floor**



**First Floor**

Total floor area 39.4 m<sup>2</sup> (424 sq.ft.) approx

This floor plan is for illustrative purposes only. It is not drawn to scale. Any measurements, floor areas (including any total floor area), openings and orientation are approximate. No details are guaranteed, they cannot be relied upon for any purpose and they do not form part of any agreement. No liability is taken for any error, omission or misstatement. A party must rely upon its own inspection(s). Powered by [www.propertybox.io](http://www.propertybox.io)



catchment, including highly regarded primary and secondary schools. Commuters? You're covered, Upton and Rock Ferry stations are just 2 miles away, offering quick links to Liverpool and Chester, while frequent bus services keep you connected. For leisure, explore Bidston Hill, Wirral's scenic parks, or head to Liverpool's vibrant city centre in under 20 minutes.

This is more than a house—it's a lifestyle. A cosy haven with green spaces, great transport, and everything you need on your doorstep.

### Entrance Hall

Double-glazed composite door and double-glazed window to the front.

### Lounge

11' 9" x 10' 4" ( 3.58m x 3.15m )

Double-glazed window to the side, electric radiator and electric fire.

### Kitchen

7' 1" x 5' 8" ( 2.16m x 1.73m )

Fitted kitchen comprising wall and base cupboards, sink and drainer unit and work surfaces. Electric oven and induction hob. double-glazed window to the side.

### First Floor Landing

With storage cupboard and loft access.

### Bedroom One

8' 8" x 11' 4" ( 2.64m x 3.45m )

Double-glazed window to the side and built-in storage.

### Shower Room

Comprising shower cubicle, wash hand basin and WC. Extractor fan and double-glazed window to the side.

**welcome to**

## **Melford Drive, Prenton**

- Sale by Modern Auction (T&Cs apply)
- Subject to an undisclosed Reserve Price
- Buyers fees apply
- Spacious Lounge
- Wrap-Around Front Garden & Private Driveway

Tenure: Freehold EPC Rating: D

Council Tax Band: A

guide price

**£70,000**



Please note the marker reflects the postcode not the actual property

**view this property online** [jonesandchapman.co.uk/Property/PTN116355](https://jonesandchapman.co.uk/Property/PTN116355)



Property Ref:  
PTN116355 - 0004

1. MONEY LAUNDERING REGULATIONS Intending purchasers will be asked to produce identification documentation at a later stage and we would ask for your co-operation in order that there is no delay in agreeing the sale. 2. These particulars do not constitute part or all of an offer or contract. 3. The measurements indicated are supplied for guidance only and as such must be considered incorrect. Potential buyers are advised to recheck measurements before committing to any expense. 4. We have not tested any apparatus, equipment, fixtures or services and it is in the buyers interest to check the working condition of any appliances. 5. Where an EPC, or a Home Report (Scotland only) is held for this property, it is available for inspection at the branch by appointment. If you require a printed version of a Home Report, you will need to pay a reasonable production charge reflecting printing and other costs. 6. We are not able to offer an opinion either written or verbal on the content of these reports and this must be obtained from your legal representative. 7. Whilst we take care in preparing these reports, a buyer should ensure that his/her legal representative confirms as soon as possible all matters relating to title including the extent and boundaries of the property and other important matters before exchange of contracts.

Jones & Chapman is a trading name of Sequence (UK) Limited which is registered in England and Wales under company number 4268443, Registered Office is Cumbria House, 16-20 Hockliffe Street, Leighton Buzzard, Bedfordshire, LU7 1GN. VAT Registration Number is 500 2481 05.

  
**jones & chapman**



**0151 608 2287**



[Prenton@jonesandchapman.co.uk](mailto:Prenton@jonesandchapman.co.uk)



349 Woodchurch Road, Prenton, PRENTON,  
Merseyside, CH42 8PE



**[jonesandchapman.co.uk](https://jonesandchapman.co.uk)**