



Westbourne Gardens
London, W2

CHESTERTONS





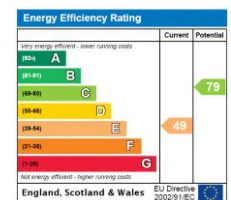
This stunning three bedroom duplex apartment is set across the first and second floors of an impressive period building on Westbourne Gardens, offering generous proportions and excellent ceiling heights throughout.

The first floor provides exceptional living and entertaining space. To the front, an elegant reception room features high ceilings, intricate corning, and three floor to ceiling shuttered sash windows that open onto a charming balcony overlooking the peaceful garden square. To the rear, a spacious eat in kitchen is beautifully appointed, complete with a marble topped island and quality finishes, while rich wooden flooring runs seamlessly throughout. Upstairs, the second floor comprises three bright and well proportioned bedrooms. The principal suite is flooded with natural light and benefits from floor to ceiling mirrored wardrobes and a stylish ensuite bathroom finished with marble tiles. Two additional guest bedrooms are served by a contemporary family bathroom with a large walk in shower.

Westbourne Gardens is a quiet and attractive garden square situated in the vibrant Notting Hill area, known for its boutique shops, artisanal brunch spots, and the famous Portobello Road. Fitness enthusiasts will find popular fitness establishments nearby, and Hyde Park is just a short walk away. The property is conveniently close to tube stations for easy commuting.

- Set across the first and second floors of an imposing period building with excellent ceiling heights
- Elegant reception room with floor-to-ceiling sash windows, and balcony overlooking the square
- Spacious eat-in kitchen with marble island and high-quality finishes
- Three bright bedrooms, including a principal suite with en-suite bathroom
- Prime location moments from Notting Hill, Royal Oak, Queensway, and Paddington Station

Asking Price £2,000,000



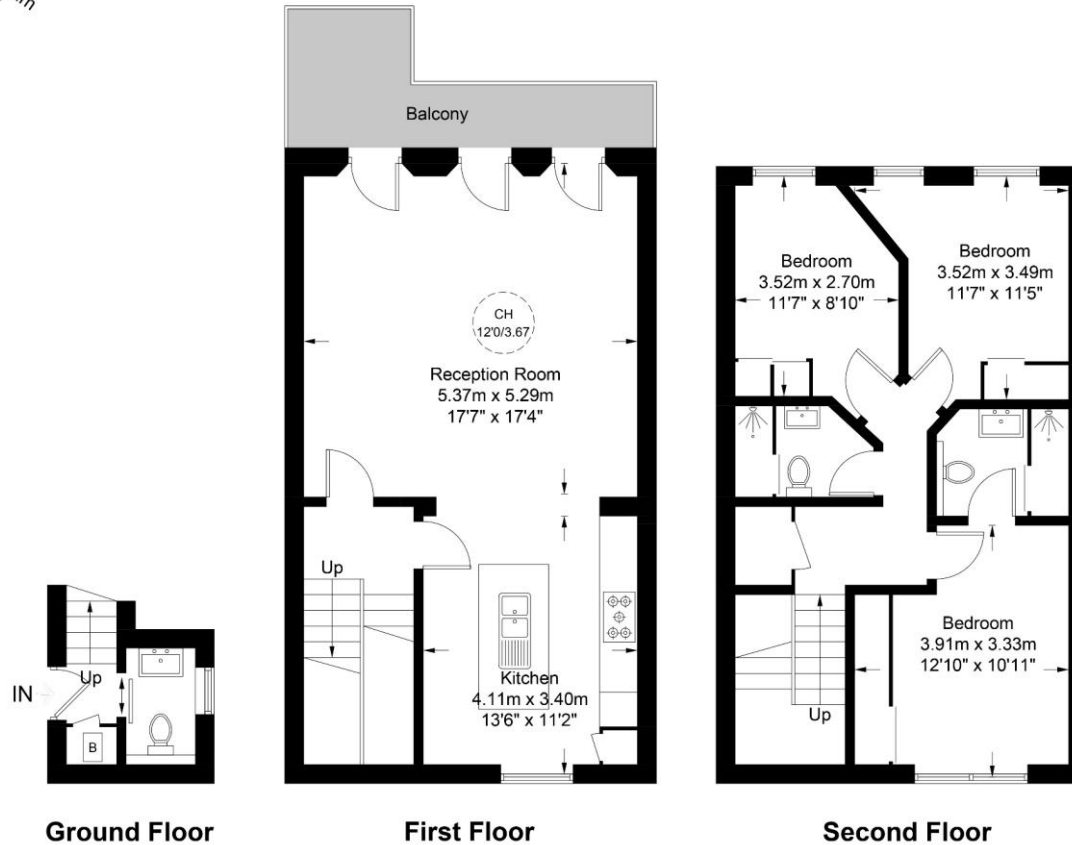
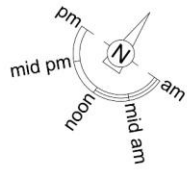
Tenure: Share of Freehold 84 years 11 months
Service Charge: TBC
Ground Rent: TBC
Local Authority: City Of Westminster
Council Tax Band: F

Chestertons Notting Hill Sales

30 Ledbury Road
 Notting Hill
 London
 W11 2AB
 nottinghill@chestertons.co.uk
 0203 040 8585

Westbourne, W2

Approximate Gross Internal Area = 1124 sq ft / 104.4 sq m



This plan is for layout guidance only. Not drawn to scale unless stated. Windows and door openings are approximate. Whilst every care is taken in the preparation of this plan, please check all dimensions, shapes and compass bearings before making any decisions reliant upon them. (ID988021)

Chesterton UK Services Limited trading as Chestertons for themselves and for the vendor of this property whose agents they are, give notice that (i) these particulars do not constitute any part of an offer or contract, (ii) all statements contained within these particulars are made without responsibility on the part of Chestertons or the vendor, (iii) whilst made in good faith, none of the statements contained within these particulars are to be relied upon as a statement or representation of fact, (iv) any intending purchasers must satisfy themselves by inspection or otherwise as to the correctness of each of the statements contained within these particulars, (v) the vendor does not make or give either Chestertons or any person in their employment any authority to make or give representation or warranty whatsoever in relation to this property. Wide angle lenses may be used. ©Copyright Chestertons | Chesterton UK Services Limited | Registered Office 40 Connaught Street, Hyde Park, London W2 2AB Registered Company Number 05334580.



This paper is 100% recyclable