

# Frank Harris & Co.



## Moatlands House, WC1H

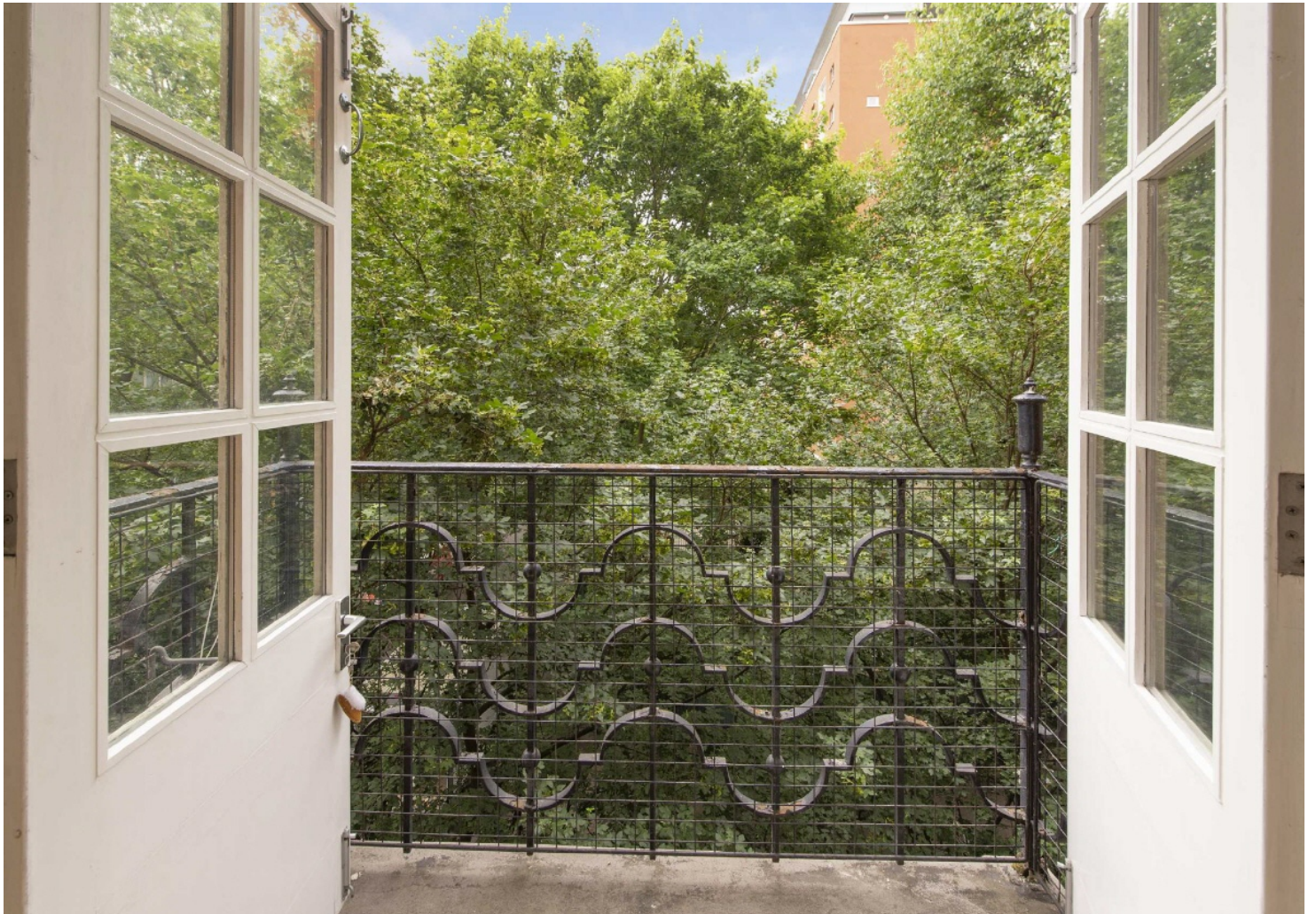
£525,000

Located in a central area, this bright, south-facing two-bedroom apartment. The property features a private balcony, plenty of natural light, and convenient access to local amenities. This apartment is sold with no onward chain and over 100 years left on the lease.

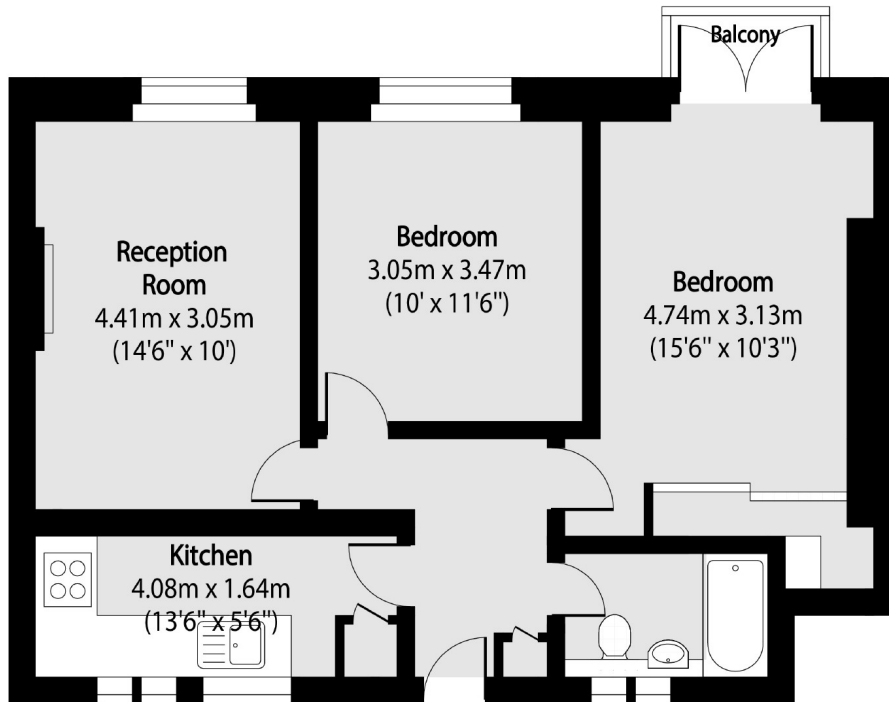


Cromer Street is centrally situated near King's Cross Station, providing excellent transport links. It offers easy access to shops, amenities, and local attractions, making it ideal for urban living.

- No Onward Chain • South Facing • Two Bedroom •
- Central Location • Over 100 Year Lease • Private Balcony •



# Frank Harris & Co.



Total area (approx): 58.99 sq m (635 sq. ft)

Balcony total area (approx): 1.19 sq m (13 sq. ft)

Frank Harris & Co. Bloomsbury and Kings Cross

81 Marchmont Street,

London, WC1N 1AL

020 7405 4444

[bloomsburysales@frankharris.co.uk](mailto:bloomsburysales@frankharris.co.uk)

Energy Rating: . We aim to make our particulars both accurate and reliable. However they are not guaranteed; nor do they form part of an offer or contract. If you require clarification on any points then please contact us, especially if you're traveling some distance to view. Please note that appliances and heating systems have not been tested and therefore no warranties can be given as to their good working order.

