



Hogarth Road, SW5

£2,600 Per calendar month

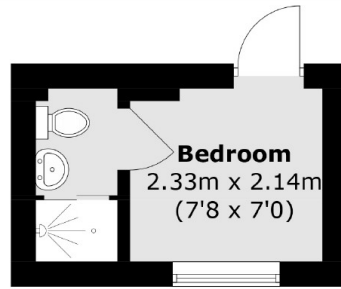
A stunning one bedroom flat located in a Victorian conversion with an additional room that would work perfectly as a study. The flat benefits from a spacious open plan living space, ample of storage and a separate laundry room.

Located close to the amenities and facilities of Earls Court, Gloucester Road and Kensington High Street. Earls Court station is only 0.1 miles away.

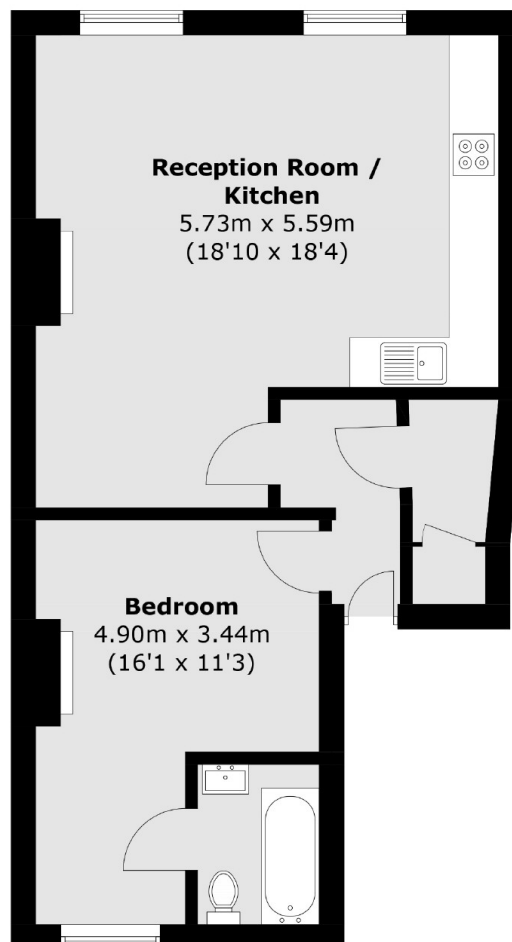
Features

- One Bedroom
- Two Bathrooms
- Study
- Split Level
- Open Plan
- Natural Light

Hogarth Road, London, SW5



Outbuilding



Total area (approx.): 51.8 sq. m (557.5 sq. ft)
Outbuilding (approx.): 7.4 sq. m (79.6 sq. ft)