



Shirland Road | | LONDON | W9 2BT

£2,300 Per month

**ESON 2**  
REAL ESTATE

## Key features

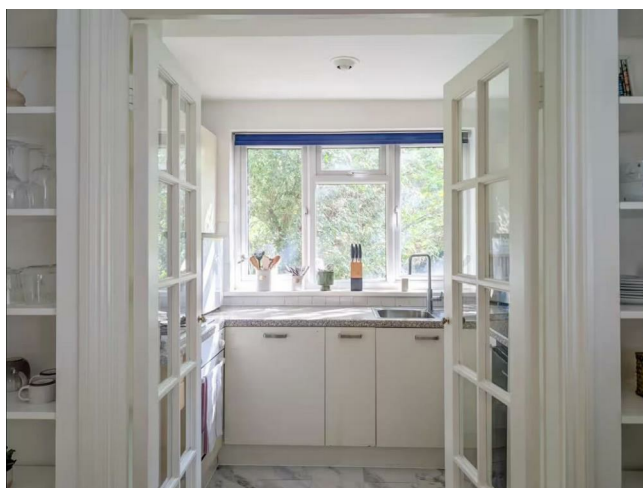
- A tranquil one bedroom apartment
- Bright open-plan sitting and dining area
- Calm principal bedroom
- Breakfast bar with pendant lighting
- Tiled bathroom with bath and overhead shower
- Moments from the Grand Union Canal towpath
- Transport links from Warwick Avenue and Maida Vale tubes

## Description

A beautiful one bedroom apartment tucked away in the heart of W9, one of West London's most charming neighbourhoods. Thoughtfully decorated throughout with a warm coastal feel, the apartment offers a bright open-plan sitting and dining area with a breakfast bar, flowing into a separate kitchen through glazed French doors.

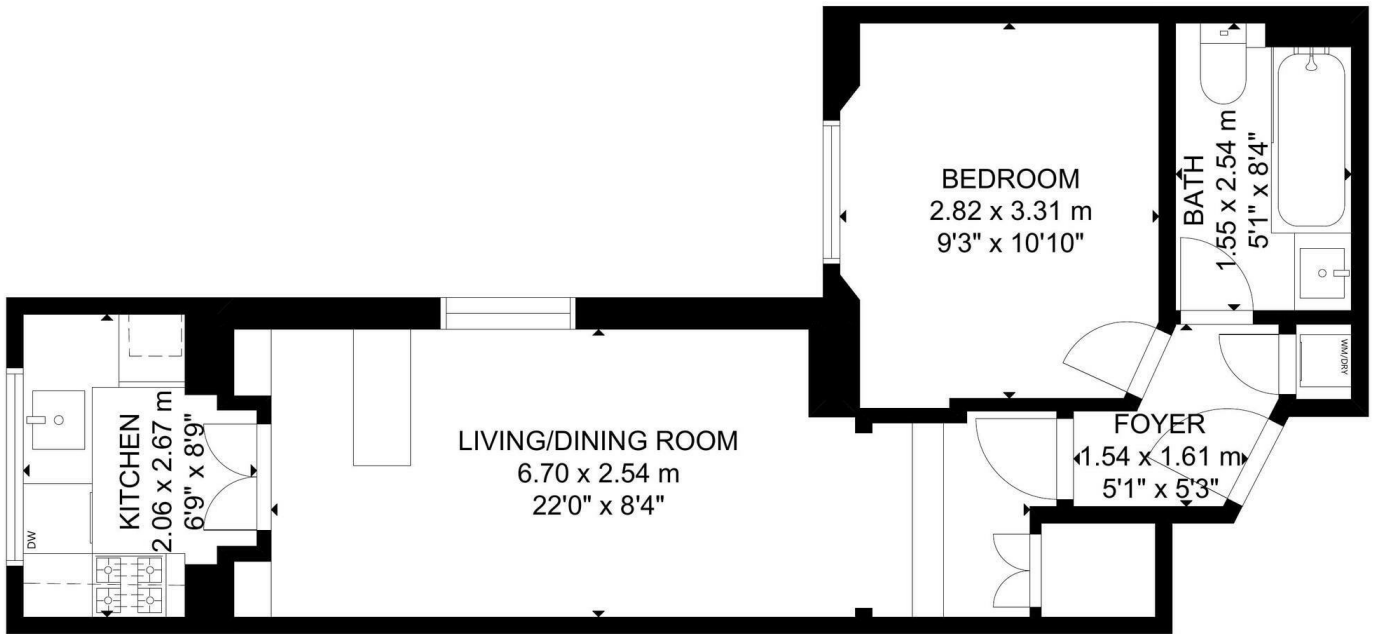
The bedroom complies a calm, well-proportioned room with a bold navy panelled feature wall and good storage. A tiled bathroom with bath and overhead shower completes the layout. Warwick Avenue underground station (Bakerloo line) is moments away, with Maida Vale and Paddington both within easy reach, providing swift connections across the city.

## Directions



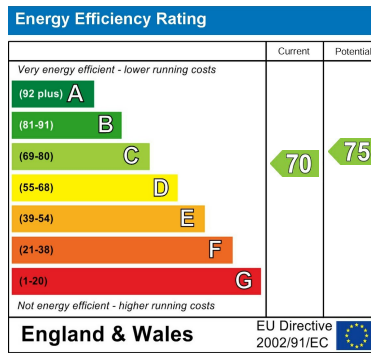


# Floor plans



GROUND FLOOR

GROSS INTERNAL AREA  
 TOTAL: 39 m<sup>2</sup>/425 sq ft  
 GROUND FLOOR: 39 m<sup>2</sup>/425 sq ft  
 SIZE AND DIMENSIONS ARE APPROXIMATE, ACTUAL MAY VARY.



Council Tax Band D    EPC Rating C



301 Michelin House 81 Fulham road  
 London  
 Greater London  
 SW3 6RD  
 07920 257649  
 fayeel@eson2.co.uk  
 www.eson2.co.uk