



Brompton Square

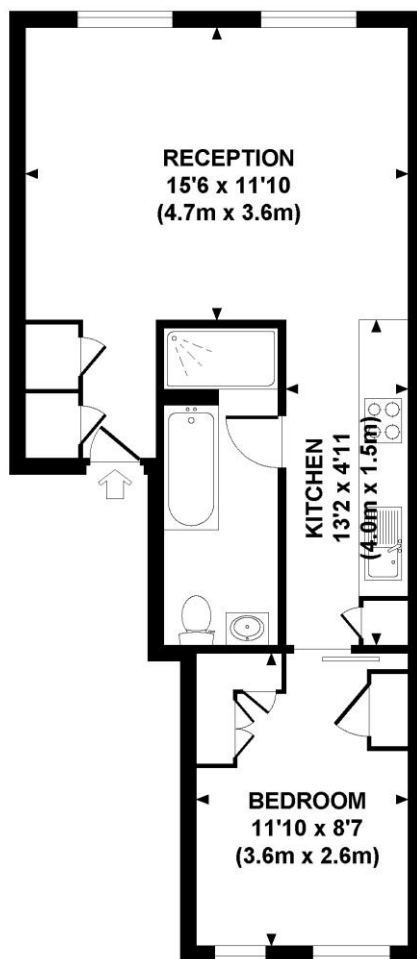
Knightsbridge, SW3

£4,225 per month
(£975 per week)

SHORT LET Delightful 2nd floor period apartment overlooking the communal garden square. The property benefits from wood flooring, a modern fully fitted kitchen and bathroom, double bedroom and separate reception.

CHESTERTONS

BROMPTON SQUARE
Approximate Gross Internal Area 445 sq ft / 41.4 sq m



**SECOND FLOOR
GROSS INTERNAL
FLOOR AREA 445 SQ FT**

Although every attempt has been made to ensure accuracy, all measurements are approximate. The floor plan is for illustrative purposes only and not to scale. Measured in accordance to RICS standards. DE-PHOTOGRAPHY.NET

Minimum Term: 1 months
Deposit Required: £1,950.00
Local Authority: Royal Borough of Kensington & Chelsea
Council Tax Band: F
EPC Rating: E
Furnished

Energy Efficiency Rating		Current	Potential
Very energy efficient - lower running costs			
(92+)	A		
(81-91)	B		
(69-80)	C		84
(55-68)	D		
(39-54)	E	54	
(21-38)	F		
(1-20)	G		
Not energy efficient - higher running costs			
England, Scotland & Wales		EU Directive 2002/91/EC	

Chestertons Knightsbridge & Belgravia Lettings

31 Lowndes Street
 London
 SW1X 9HX
 knightsbridge@chestertons.co.uk
 02072353530
 chestertons.co.uk

Additional tenant charges apply (fees apply to non-AST tenancies only)

Tenancy Agreement Fee: £300
 References per Tenant/Guarantor: £60
 Inventory check (approx. £100 – £250 inc. VAT)
chestertons.co.uk/property-to-rent/applicable-fees

Chesterton Global Ltd trading as Chestertons for themselves and for the vendor of this property whose agents they are, give notice that (i) these particulars do not constitute any part of an offer or contract, (ii) all statements contained within these particulars are made without responsibility on the part of Chestertons or the vendor, (iii) whilst made in good faith, none of the statements contained within these particulars are to be relied upon as a statement or representation of fact, (iv) any intending purchasers must satisfy themselves by inspection or otherwise as to the correctness of each of the statements contained within these particulars, (v) the vendor does not make or give either Chestertons or any person in their employment any authority to make or give representation or warranty whatsoever in relation to this property. Wide angle lenses may be used. ©Copyright Chestertons | Chesterton Global Ltd | Registered Office 40 Connaught Street, Hyde Park, London W2 2AB Registered Company Number 05334580.



This paper is 100% recyclable