



## Lanadron Close, TW7

£300,000

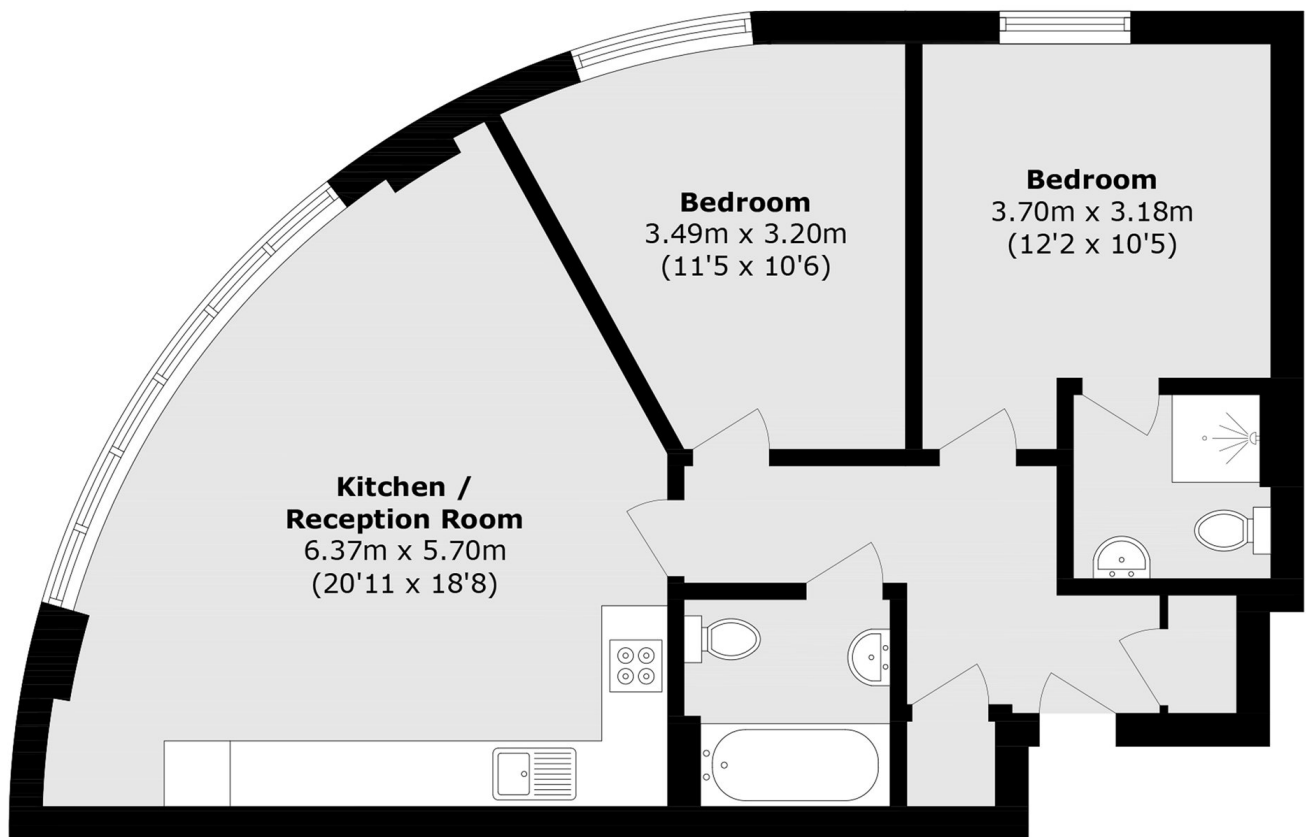
A larger than average two double bedroom apartment, set in a popular development in the heart of Isleworth. Benefits include two bathrooms, Long Lease, allocated parking and no onward chain.

Langtry Court is a popular and sought after development situated in the heart of Isleworth offering easy access to Isleworth BR mainline station, whilst the shops and amenities of Isleworth, St. Margarets and Richmond are within easy reach.

### Features

- Larger Than Average
- No Onward Chain
- Close to Train Station
- Parking Included
- Two Bathrooms
- Long Lease

# Lanadron Close, Isleworth, TW7



Total area (approx.): 64.4 sq. m (693.2 sq. ft)