



HEARTWOOD
HOMES

Camp Road, St. Albans, AL1 5DX

£575,000

🛏️ 2 🚿 1 🚗 2

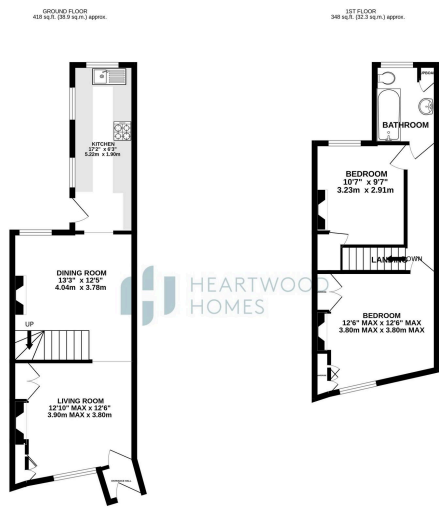


Commanding a prime position just a short stroll from the mainline station, with swift and direct connections to London, this exquisite two-bedroom character home seamlessly blends period charm with refined modern living.

Beyond the welcoming entrance porch, a beautifully proportioned living room offers a warm and elegant setting, complemented by a formal dining room perfect for intimate gatherings. To the rear, a tastefully designed kitchen marries style with functionality. Upstairs, two spacious double bedrooms provide serene retreats, served by a well-appointed family bathroom.

The private, courtyard-style garden offers a secluded sanctuary for relaxation or al fresco entertaining. Moments away, the manicured open spaces of Clarence Park invite leisurely walks, while the scenic Alban Way leads directly to the vibrant heart of the city.





HEARTWOOD HOMES

TOTAL FLOOR AREA: 797 sq. ft. (73.2 sq. m.) approx.
While every effort has been made to ensure the accuracy of the floor plan, Heartwood Homes does not accept any liability for errors or omissions. The actual layout and dimensions may vary from the floor plan. The services, systems and materials shown have not been tested and no guarantee is given for the accuracy of the floor plan.

- Prime location just a short walk from St. Albans mainline station with direct services and a porch leading to a spacious, light-filled living room.
- Stylish, well-equipped kitchen positioned at the rear of the property
- Sophisticated family bathroom finished to a high standard.
- Close proximity to the scenic open spaces of Clarence Park, perfect for leisurely walks.
- Elegant two-bedroom character home beautifully presented throughout.
- Separate formal dining room ideal for entertaining guests.
- Two generously sized double bedrooms offering tranquil and comfortable retreats.
- Private, courtyard-style rear garden providing a peaceful outdoor sanctuary.
- EPC Grade D

