



Landor Road, SW9

£3,700 Per calendar month

This top floor split-level flat, with three bedrooms and an open plan reception room with wooden flooring. An ideal property for young professional sharers looking for a home with plenty of space.

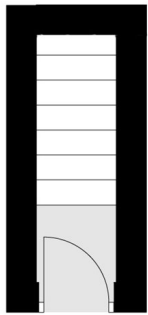
Clapham High Street, Stockwell and Brixton Village all a short walk away and The Landor pub, with its fantastic beer garden. Landor Road is a firm favourite of busy commuters.

Features

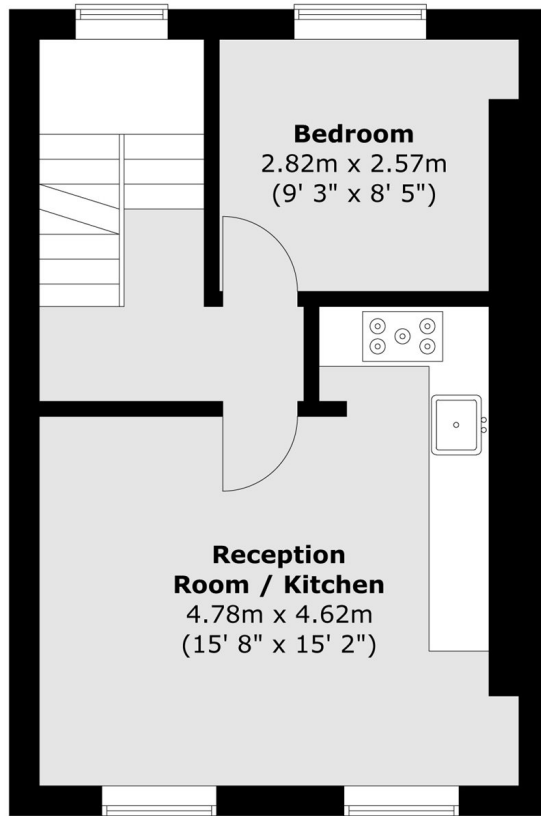
- Three Double Bedrooms
- Split-Level
- Top Floor Flat
- Open Plan Reception
- Wooden Flooring
- Close To Transport

Landor Road, London, SW9

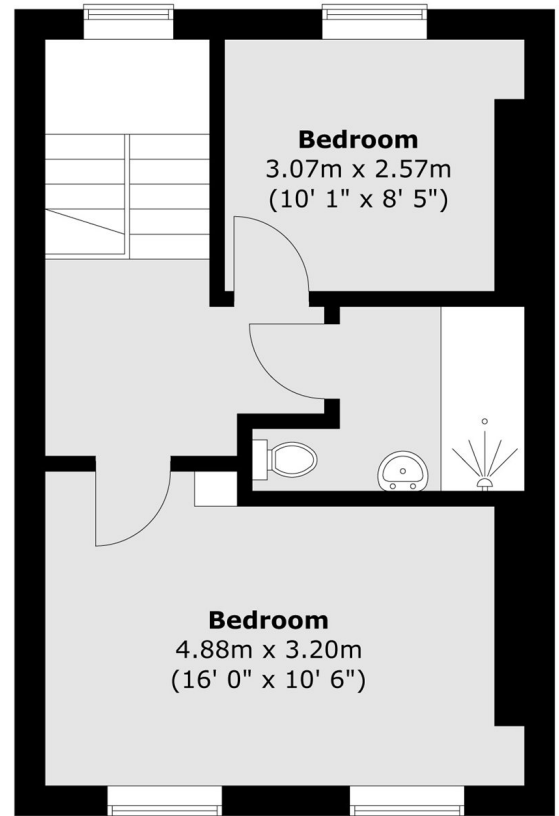
Ground Floor



First Floor



Second Floor



Total area (approx.) : 76.4 sq. m (822 sq. ft)