



Guide Price
£250,000

Freehold

3x  1x  1x 

**Brunswick Gardens,
Dover, Kent, CT16**

OVER 60?

Secure this property
for up to **59% less!**

Wards
Helping you move forwards



Main features

- Ideal family home
- Off street parking and garage
- Quiet cul-de-sac location
- Close to town with a selection of schools and shops
- Easy access to A2/M2, making commuting less stressful as well as a high speed rail link to London

Accommodation

GROUND FLOOR

Entrance Hallway
 Lounge : 14'8 x 11'7 (4.47m x 3.53m)
 Dining Area: 10'2 x 8'9 (3.10m x 2.67m)
 Kitchen : 10'8 x 9'5 (3.25m x 2.87m)

FIRST FLOOR

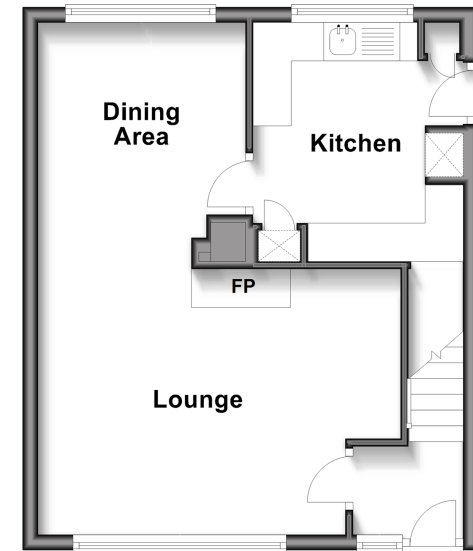
Landing
 Bathroom : 6'3 x 5'9 (1.91m x 1.75m)
 Bedroom 2 : 11'6 x 9'4 (3.51m x 2.85m)
 Bedroom 3 : 7'9 x 6'3 (2.36m x 1.91m)
 Bedroom 1 : 11'2 x 9'8 (3.41m x 2.95m)

OUTSIDE

Front Garden
 Rear Garden
 Garage & Off Road Parking

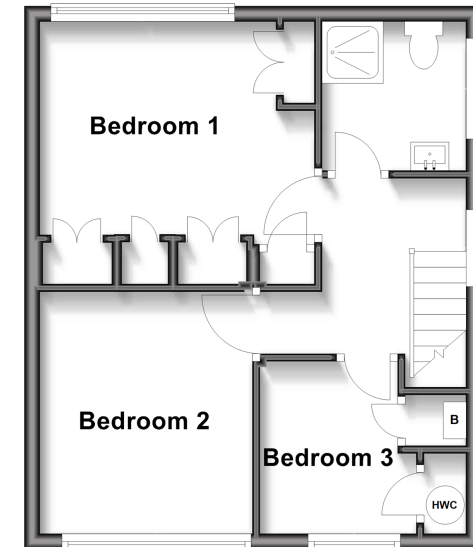
Ground Floor

Approx. 37.1 sq. metres (399.0 sq. feet)



First Floor

Approx. 37.2 sq. metres (400.9 sq. feet)



Unable to display material information. Please check with the branch for material information details for this property



10736029/20260409/TE/OV