



OVER 60?

Secure this property
for up to **59% less!**

Price

£290,000

Freehold

4x  2x  2x 

**Sherbourne Avenue,
Ryde, Isle of Wight,
PO33**

Pittis 
Helping you move forwards



Main features

- End of terrace house with garage and off road parking
- Rear garden with gated access
- Modern home with up to date facilities
- Flexible accommodation, ideal for a growing family
- Toilet facilities on all floors

Accommodation

GROUND FLOOR

Entrance Hallway
 Kitchen : 15'2 x 14'6 (4.63m x 4.42m)
 Study: 11'7 x 8'0 (3.53m x 2.44m)
 Cloakroom
 Garage : 16'0 x 8'0 (4.88m x 2.44m)

FIRST FLOOR

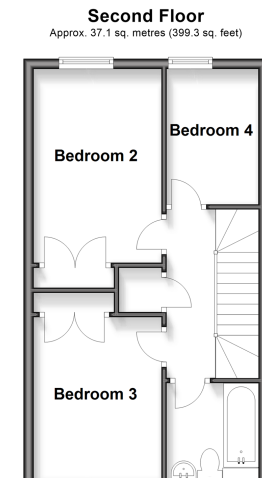
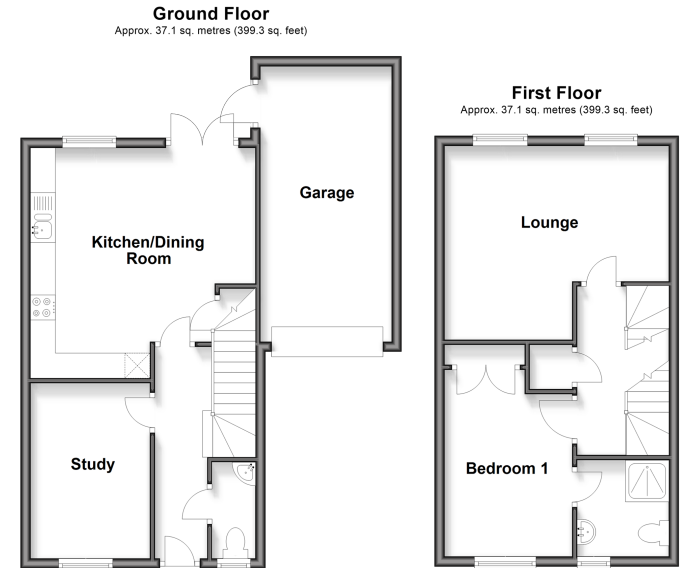
Landing
 Lounge : 12'6 x 8'7 (3.81m x 2.62m) plus 8'9 x 6'5 (2.67m x 1.96m)
 Bedroom 1: 12'3 x 8'7 (3.74m x 2.62m)
 En Suite Shower Room

SECOND FLOOR

Landing
 Bedroom 2: 12'5 x 8'5 (3.79m x 2.57m)
 Bedroom 3: 10'0 x 8'7 (3.05m x 2.62m)
 Bedroom 4: 8'11 x 6'0 (2.72m x 1.83m)
 Bathroom

OUTSIDE

Front Garden
 Rear Garden



Call Ryde - 01983 564646 ■ pittis.co.uk

- Legal advice should be taken to verify fixtures/fittings, planning, alterations and/or lease details
- Appliances & services are untested, dimensions are approximate and floor plans are not to scale
- Through a Homewise Home For Life Plan people aged 60+ can secure this property for up to 59% less, by purchasing a Lifetime Lease



60426931/20260120/JH/AGAN