



Flat 2 Waterloo Lane

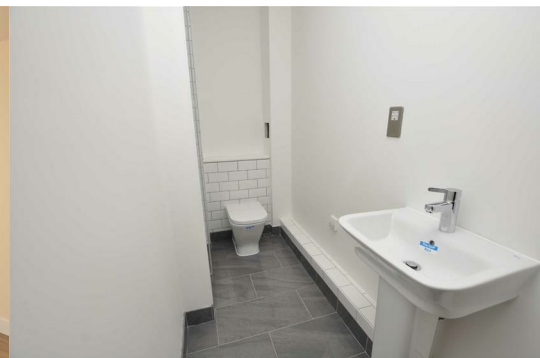
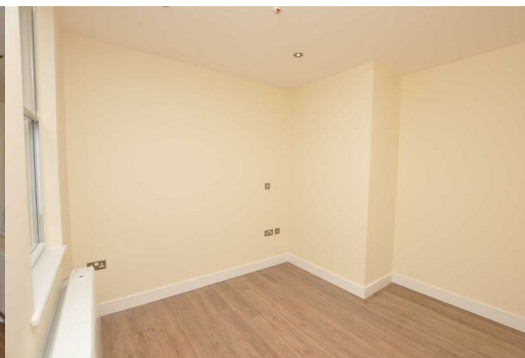
, Chelmsford, CM1 1BD

£900 PCM



Available to rent is this flat which offers both comfort and convenience. The flat features a welcoming reception room, ideal for relaxation or entertaining guests, providing a warm and inviting atmosphere. The apartment's layout maximises space, creating a sense of openness and light throughout.

Situated in a desirable location, residents will benefit from easy access to local amenities, including shops, cafes, and parks, all within a short stroll. Chelmsford's excellent transport links make commuting a breeze, connecting you to nearby cities and beyond.



ENTRANCE

Communal entrance and stairs to all floors.

LOUNGE 16'2" x 14'4" (4.93 x 4.37)

Wood effect flooring, windows to side aspect. Down lights to ceiling. Cupboard.

KITCHEN AREA

Selection of wall and base units with under cabinet lighting. Integrated fridge, washing machine, cooker and 4 ring hob with extraction over.

BEDROOM 8'5" x 8'8" (2.57 x 2.64)

Wood effect flooring, window to front aspect, recess for wardrobe. Down lights to ceiling.

BATHROOM

Tiled floor and part tiles walls, walk in shower cubicle, wash basin and WC. Down lights to ceiling.

EXTERNAL

There is no parking with this property.

INFORMATION

Holding Fee: £207.00

Deposit £1038.00

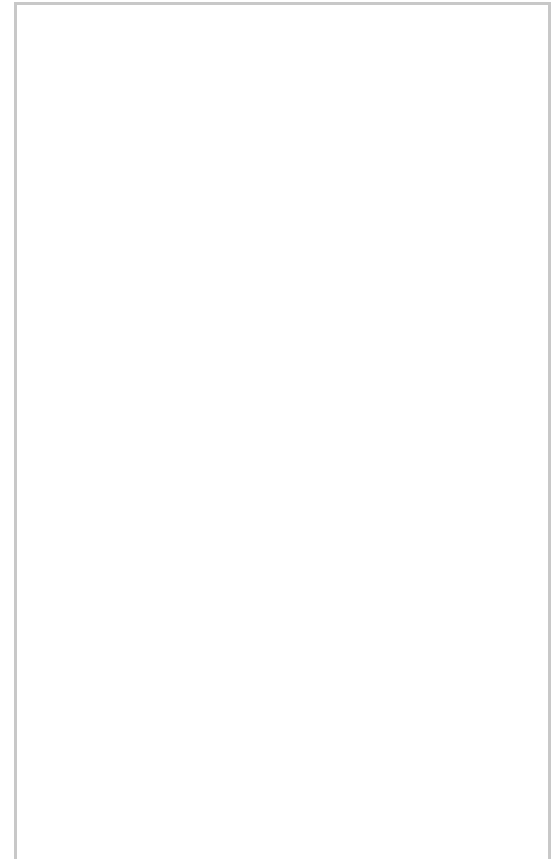
Applicants must be able to show an annual income of £28,000 or more.

Available: early June 2026.

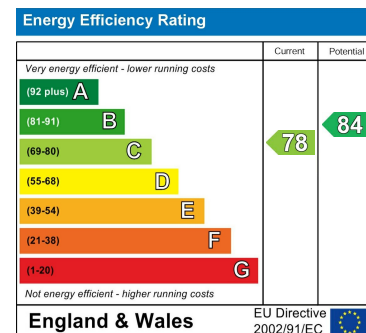
Area Map



Floor Plans



Energy Efficiency Graph



These particulars, whilst believed to be accurate are set out as a general outline only for guidance and do not constitute any part of an offer or contract. Intending purchasers should not rely on them as statements of representation of fact, but must satisfy themselves by inspection or otherwise as to their accuracy. No person in this firm's employment has the authority to make or give any representation or warranty in respect of the property.

65 New London Road, Chelmsford, Essex, CM2 0ND

Tel: 01245 266088 Email: property@elwelltaylor.co.uk <https://www.elwelltaylor.co.uk>