



Britannia Walk, N1

£475,000

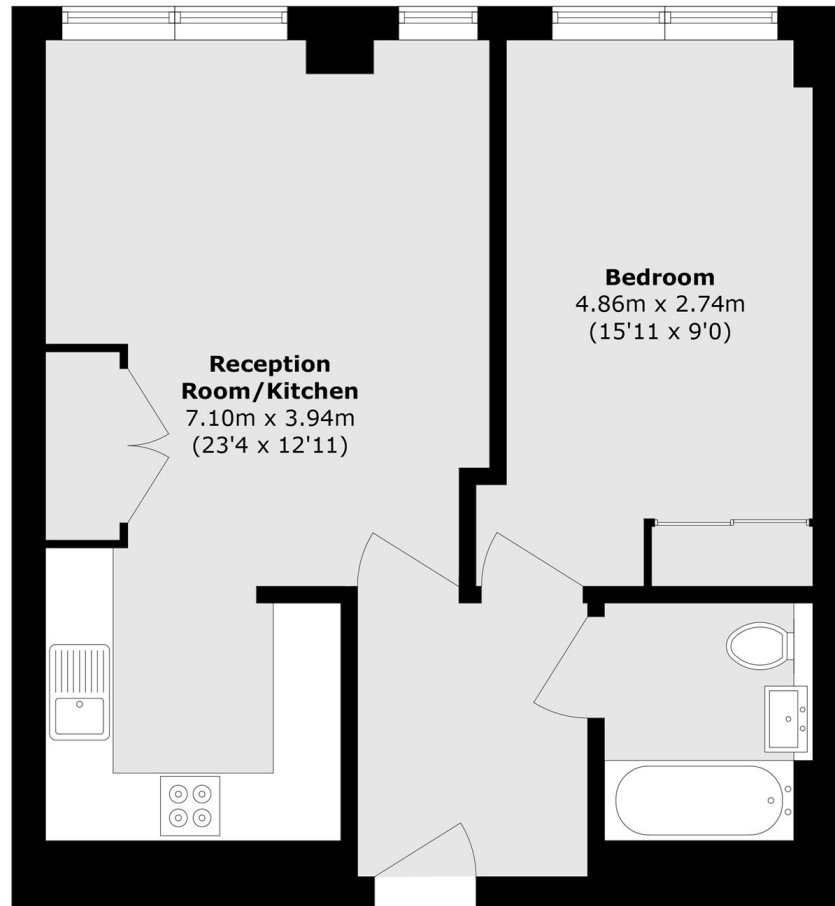
A well presented one-bedroom apartment in a secure, modern development. The apartment comprises an open-plan kitchen/living room with a large storage cupboard, a generous double bedroom and a contemporary family bathroom. Residents benefit from a communal raised courtyard, Secure Bicycle Storage.

The apartment is located a short distance from Old Street Station (Northern Line), Moorgate (Metropolitan, Circle, Hammersmith & City), and Liverpool Street (Elizabeth Line), as well as numerous bus links. The area provides a selection of bars, restaurants, and shops with Shoreditch and Angel close by.

Features

One Bedroom Apartment
Modern Development
Great Transport Links
Sought After Location
Bicycle Storage
Open Plan

Britannia Walk,
London, N1



Total area (approx.): 50.5 sq. m (543.5 sq. ft)