



Price
£300,000

Freehold

2x  1x  1x 

**Plot 27 Osborne
Gardens,
Meadowbridge, Herne
Bay, Kent, CT6**

Wards
Helping you move forwards



Main features

- Bespoke kitchen with integrated Bosch appliances
- Flooring included throughout
- Turf to the rear garden included
- Tiling to bathrooms and en-suites included
- Air Source Heat Pump
- EV Charging points
- Open green spaces

Accommodation

GROUND FLOOR

Entrance Hall

Cloakroom

Kitchen: 11'6 x 7'3 (3.51m x 2.21m)

Lounge/diner: 17'3 x 14'6 (5.26m x 4.42m)

FIRST FLOOR

Landing

Bedroom 1: 12'7 x 10'2 (3.84m x 3.10m)

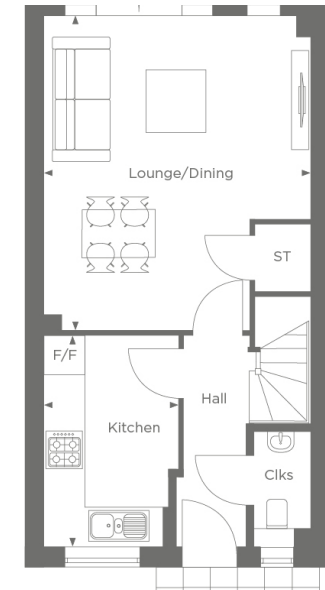
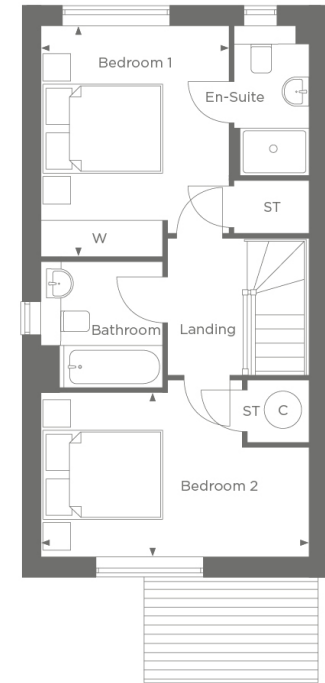
En-Suite

Bedroom 2: 14'6 x 8'11 (4.42m x 2.72m)

Bathroom

OUTSIDE

Off Street Parking



Call Herne Bay - 01227 361226 ■ wardsofkent.co.uk

- If buying to let, the energy rating will need to be improved to at least 'E' rating before you can let the property
- Legal advice should be taken to verify fixtures/fittings, planning, alterations and/or lease details
- Appliances & services are untested, dimensions are approximate and floor plans are not to scale



11239076/20260312/DP/GG