



Guide Price
£525,000

Freehold

4x  3x  1x 

**Waterside Quay,
Aylesford, Kent, ME20**

OVER 60?

Secure this property
for up to **59% less!**

Wards
Helping you move forwards

Accommodation

GROUND FLOOR

Entrance Hall

Cloakroom

Kitchen: 14'11 x 13'10 (4.55m x 4.22m)

Lounge/Dining Area: 23'6 at widest point x 20'6 into bay (7.17m x 6.25m)

FIRST FLOOR

Landing

Bedroom 1: 23'7 x 12'9 (7.19m x 3.89m)

En-Suite Bathroom

Bedroom 3: 14'1 x 9'6 (4.30m x 2.90m)

Bedroom 4: 11'6 x 7'5 (3.51m x 2.26m)

Bathroom

SECOND FLOOR

Landing

Bedroom 2: 16'6 x 13'11 (5.03m x 4.24m)

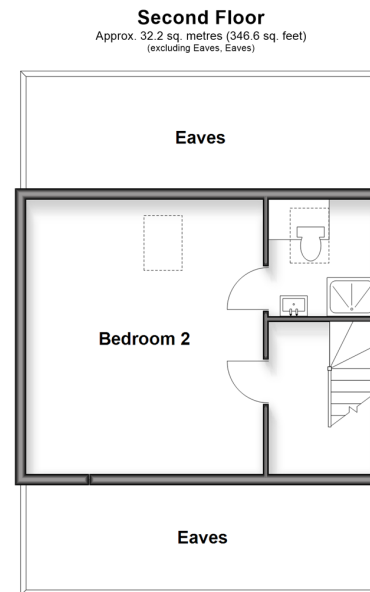
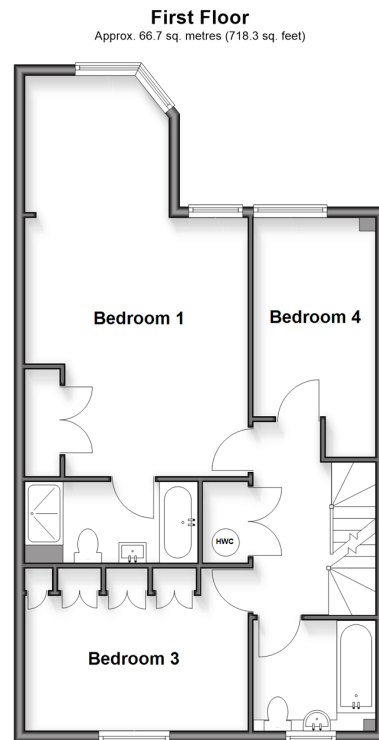
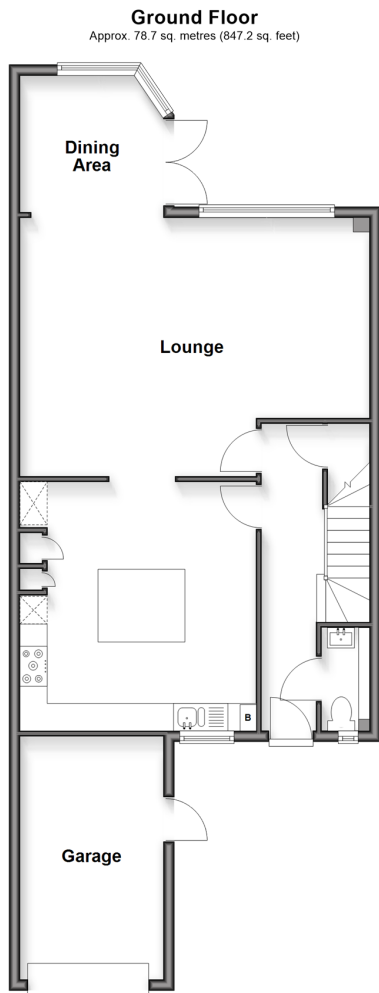
En-Suite Shower Room

OUTSIDE

Courtyard Parking

Garage

Rear Enclosed Decking Area





Main features

- Tastefully decorated throughout with modern fixtures & fittings
- Set over 3 floors with bedroom 2 having the luxury of occupying the entire top floor
- Landscaped rear garden complete with pergola, hot tub & bar – perfect for entertaining
- Access to private riverside area
- Located close to the historic Aylesford village & within easy access of all amenities



Nearest Schools

Primary Schools: St Peter's C of E Primary 0.5 miles, Allington Primary 0.9 miles, Palace Wood Primary 1.1 miles. Secondary Schools: Aylesford School 1.1 miles, The Maplesden Noakes School 1.6 miles, Maidstone Grammar School for Girls 1.6 miles



Transport Information

Train Stations: Aylesford 1.3 miles, Barming 2.3 miles, Maidstone West 2.3 miles



Address

Waterside Quay, Aylesford, Kent, ME20



Directions

For directions to this property please contact us.



Wards
Helping you move forwards

Call Larkfield Branch 01732 847877 ■ wardsofkent.co.uk



■ Through a Homewise Home For Life Plan people aged 60+ can secure this property for up to 59% less, by purchasing a Lifetime Lease

EPC RATING	CURRENT:	POTENTIAL:
 	 C(75)	 B(83)

12930024/20260331/HS1/HS1