



MILES ESTATE AGENTS

**2 Heathfield Close West Bagborough
Taunton TA4 3HJ £230,000**



A spacious 3 bedroom mid terrace house set in lovely mature gardens in this sought after village within the wonderful Quantock Hills and Kingsmead catchment area. Good size living / dining room and plenty of scope for cosmetic improvement - a rare opportunity not to be missed! Early viewing highly recommended. Freehold Council Tax Band B EPC : D



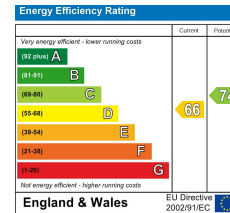
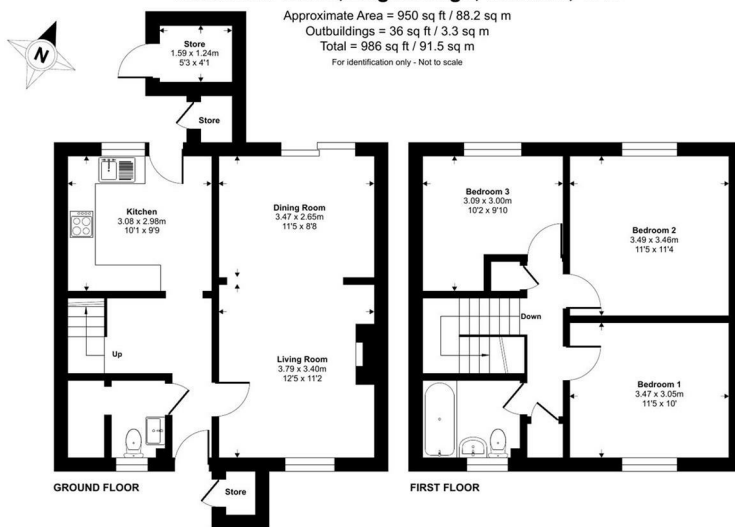


Features:

- Entrance hall
- Good size living/dining room
- Kitchen
- Useful cloakroom
- 3 bedrooms
- Family bathroom
- Lovely enclosed garden
- Freehold
- EPC : D
- Council Tax Band B



Heathfield Close, Bagborough, Taunton, TA4



Floor plan produced in accordance with RICS Property Measurement 2nd Edition, incorporating International Property Measurement Standards (IPMS2 Residential). Produced for Miles Alexander Limited T/A Miles Estate Agents. REF: 1449485 © ricscom 2020.



Viewings strictly through the selling agents:

Miles Estate Agents

2 Piffin Lane, Bishops Lydeard, Taunton, Somerset, TA4 3AS

Tel: 01823 470 500

lydeard@milesestateagents.co.uk

www.milesestateagents.co.uk



rightmove 

OnTheMarket.com 

MILES ESTATE AGENTS

BEST
 ESTATE AGENT GUIDE
 2019 : EXCEPTIONAL
 SALES