



Verdi Court, Lichfield, WS13 6AP

£290,000

3 1 1



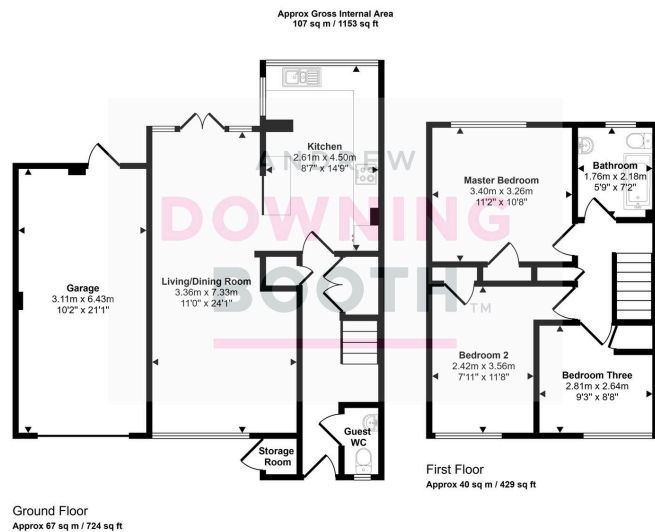
An immaculately presented three-bedroom home in a sought-after area, featuring a stunning open-plan kitchen, living, and dining space, perfect for contemporary living.

Located in the desirable area, this property offers convenient access to local amenities, including shops, reputable schools, and green spaces. Excellent transport links ensure easy commuting to surrounding towns and cities, providing a well-connected lifestyle. Residents will appreciate the blend of a friendly community atmosphere with the practicalities of modern living, making it an appealing location for various lifestyles.

Step inside this beautifully updated home to discover a practical entrance hall leading to a contemporary guest WC. The heart of this home is the expansive open-plan kitchen, living, and dining area, meticulously designed for both everyday comfort and entertaining. Upstairs, three good-sized bedrooms offer tranquil retreats, complemented by a modern family bathroom. Outside, the property boasts ample off-street parking with a gravelled driveway and a beautifully landscaped, private rear garden. An integrated garage provides additional storage and convenience.

This home is ready for you to move straight into and enjoy. Arrange a viewing today to fully appreciate its charm and quality.





This floorplan is only for illustrative purposes and is not to scale. Measurements of rooms, doors, windows, and any items are approximate and no responsibility is taken for any error, omission or mis-statement. Icons of items such as bathroom suites are representations only and may not look like the real items. Made with Made Snappy 360.

- Three Bedroom Semi-Detached Family Home
- Open Plan Kitchen, Dining & Living Area
- Three Well-Portioned Bedrooms
- Spacious Driveway With Side Garden
- EPC Rating:
- Beautifully Presented Throughout
- Close To Local Schools & Amenities
- Contemporary Family Bathroom
- Superb Private Rear Garden
- Council Tax Band:

