



17a Chester Street, Shrewsbury, SY1 1NX

2 bedroom apartment — £240,000 Leasehold

17a Chester Street, Shrewsbury, SY1 1NX

Coopergreenpooks.co.uk

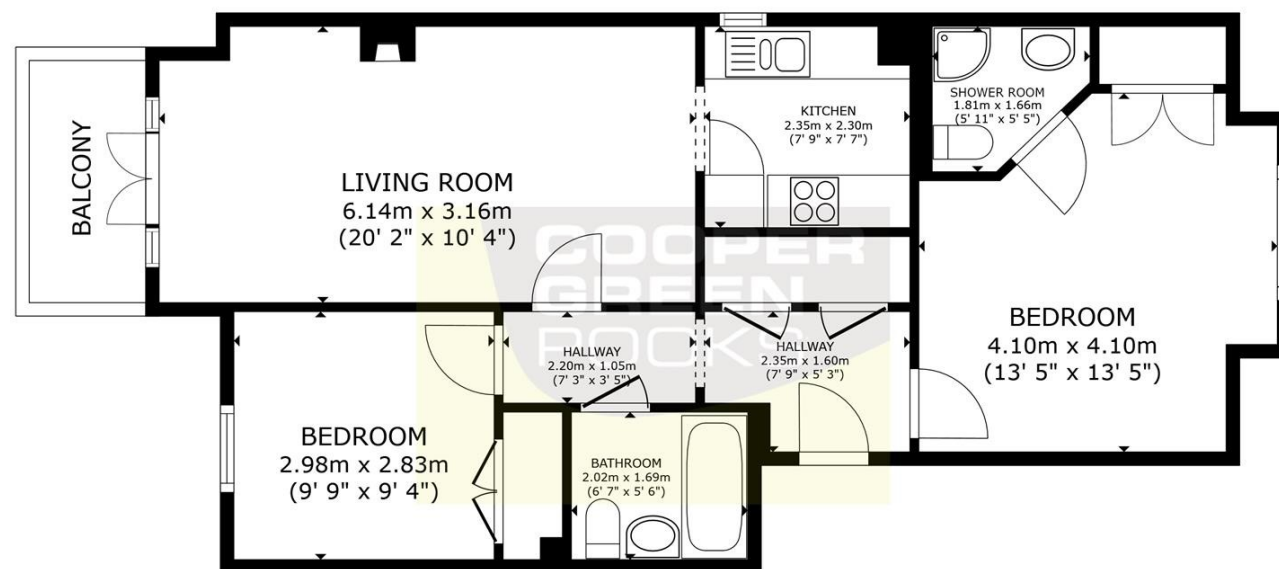
£240,000 Leasehold — 2 bedroom apartment

sales@cgpooks.co.uk

This well presented first floor apartment offers good accommodation with a private parking space in a gated town centre development, with a balcony and fantastic river views.

KEY FEATURES

- Light and well configured interior with oak flooring to living areas.
- Entrance hall which has 2 built in stores.
- Living/dining room having glazed double doors opening onto a balcony that provides beautiful unspoilt views across the River Severn and Frankwell cricket pitch.
- Separate fitted kitchen with integrated appliances and window to side.
- Bathroom and 2 double bedrooms, both with fitted wardrobes. The main bedroom also has an en suite shower room.
- Gas fired central heating and double-glazed windows with custom made plantation shutters.
- Secure gated car park with designated parking space.
- Very attractive and sizable communal grounds which directly overlook the river and are neatly lawned with seating areas and established trees.
- Quiet and private location within a popular and very convenient, modern town centre development, just a few minutes' walk from the train station, as well as the main shopping areas, bars and restaurants.
- Lease of 199 years from 2004.



FLOOR PLAN

GROSS INTERNAL AREA
FLOOR PLAN 66.2 m² (713 sq.ft.)
EXCLUDED AREAS : BALCONY 3.7 m² (40 sq.ft.)
TOTAL : 66.2 m² (713 sq.ft.)
SIZES AND DIMENSIONS ARE APPROXIMATE, ACTUAL MAY VARY.





17a Chester Street, Shrewsbury, SY1 1NX

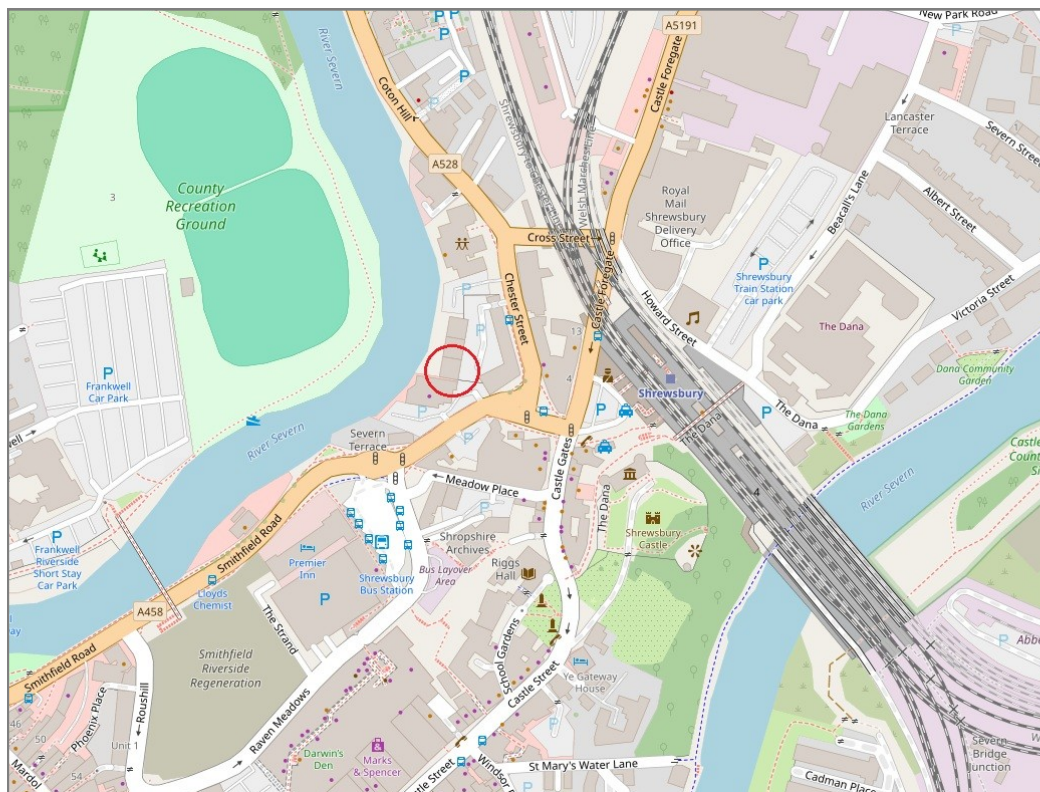
£240,000 Leasehold — 2 bedroom apartment

sales@cgpooks.co.uk

rightmove 

 OnTheMarket.com

 **RICS**
Regulated by RICS



BOUNDARIES NOT CONFIRMED

Local Authority	Shropshire Council
Council Tax	Band C
EPC Band	Band B
Services	All mains services are connected

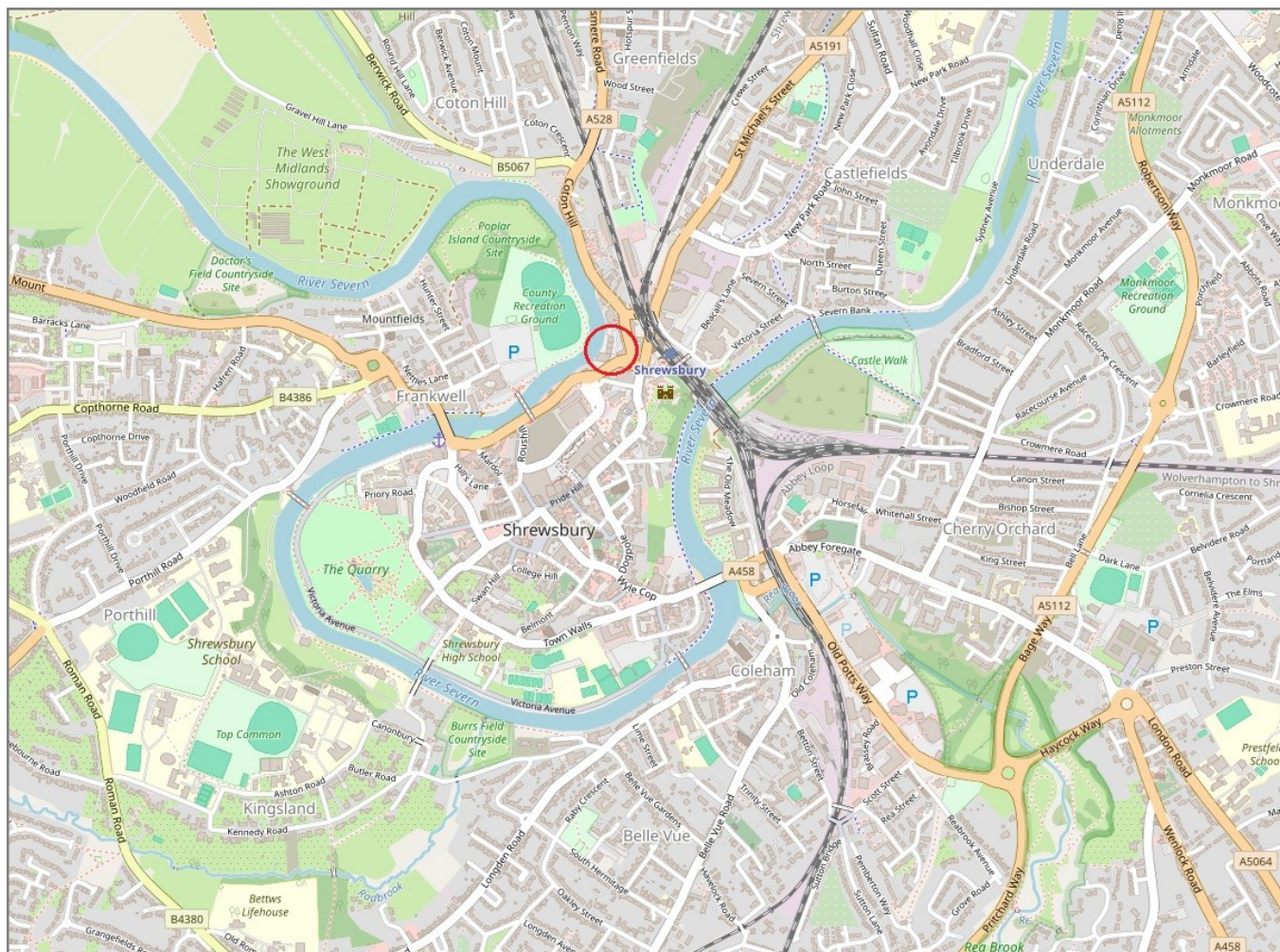
Tenure	Leasehold
Lease Length	199 years from 2004
Service Charge	£581 every six months
Ground Rent	TBC

17a Chester Street, Shrewsbury, SY1 1NX

Coopergreenpooks.co.uk

£240,000 Leasehold — 2 bedroom apartment

sales@cgpooks.co.uk



IMPORTANT NOTICE: Cooper Green Pooks for themselves and for the lessors or vendors of this property whose agents they are give notice that: 1 No appliances, services or service installations have been tested and no warranty as to suitability or serviceability is implied. Any prospective purchaser or lessee is advised to obtain verification from their surveyor or solicitor. 2. The particulars are set out as a general outline only for the guidance of the intended purchasers or lessees and do not constitute, nor constitute part of, an offer or contract. 3. All descriptions, reference to condition and necessary permissions for use and occupation and other details are given in good faith and are believed to be correct but any intending purchasers or lessees should not rely on them as statements or representation of fact but satisfy themselves by inspection or otherwise as to the correctness of each of them. 4. No person in the employment of Cooper Green Pooks has any authority to make or give any representation or warranty whatsoever in relation to this property. 5. All rentals and prices are quoted exclusive of Stamp Duty, legal and surveyors fees and any other associated purchasers or lessees costs. 6. Floor plans are indicative only and should not be relied on. 7. The plan showing the boundary of the property is indicative only and has not been checked against the legal title so should not be relied on. 8. All dimensions, floor areas and site areas are only approximate and should not be relied on. Dimensions are generally maximum room dimension.