



Price

£120,000

Leasehold

1x  1x  1x 

**Sidmouth Court,
Churchill Close,
Dartford, Kent, DA1**

OVER 60?

Secure this property
for up to **59% less!**

Wards
Helping you move forwards



Main features

- Lovely ground floor flat with allocated parking
- Communal garden
- Close to train station and local shops
- Quiet and peaceful location
- Strong rental demand area

Accommodation

GROUND FLOOR

Hallway

Bathroom: 6'1 x 5'0 (1.86m x 1.53m)

Bedroom: 11'3 x 8'10 (3.43m x 2.69m)

Lounge: 14'7 x 12'0 (4.45m x 3.66m)

Kitchen: 7'11 x 6'3 (2.41m x 1.91m)

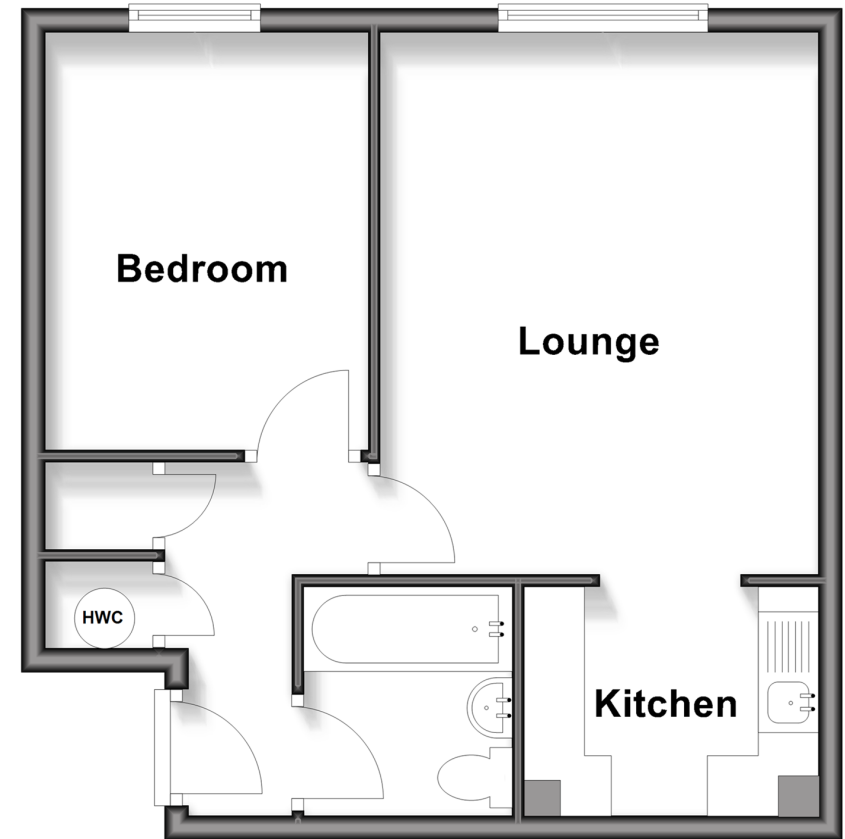
OUTSIDE

Communal Garden

Allocated Parking Space

Ground Floor

Approx. 40.1 sq. metres (431.2 sq. feet)



Call Dartford - 01322 288211 ■ wardsof Kent.co.uk

- Legal advice should be taken to verify fixtures/fittings, planning, alterations and/or lease details
- Appliances & services are untested, dimensions are approximate and floor plans are not to scale
- Through a Homewise Home For Life Plan people aged 60+ can secure this property for up to 59% less, by purchasing a Lifetime Lease



10546047/20260126/MP/JH