

## North View Road, N8

£525,000

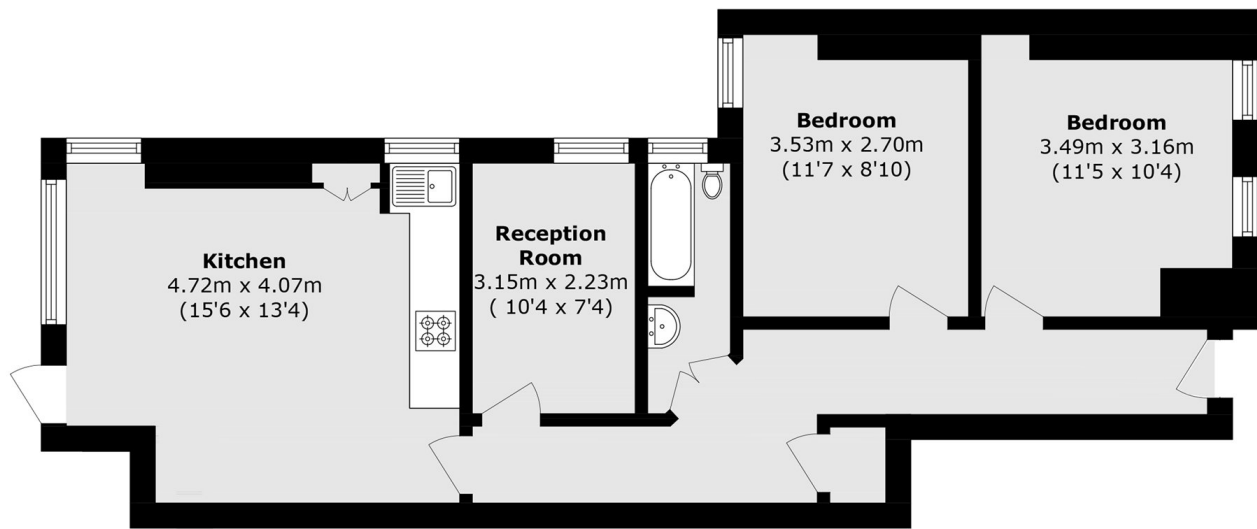
A two bedroom Edwardian maisonette situated on the ground floor and benefitting from a West Facing rear garden offers the perfect opportunity for someone to update and make their own. This property also comprises a bay fronted reception room and a large kitchen/ dining area.

Ideally located nearby Alexandra Park green space and within walking distance to Hornsey Rail Station, the amenities of High Street Hornsey and Crouch End Broadway and the highly sort after Campsbourne Primary School.

### Features

- Two Bedrooms
- Private Garden
- Ground Floor
- Share Of Freehold
- Private Entrance
- Chain Free

# North View Road, London, N8



Total area (approx.): 61.8 sq. m (665.1 sq. ft)