

Property ref: 22119

Hermitage, Reading, RG1 7LF

£1,650 PCM

HASLAM'S
Lettings



Located close to the town centre is this contemporary two bedroom apartment situated on the tenth floor with views over north Reading. Reading Borough Council Tax Band D. Broadband/Mobile Info: Connections available. For an indication of specific speeds and supply of Broadband and Mobile, we advise applicants go to the Ofcom website 'Broadband and Mobile Coverage Checker'.

Available 31/08/2026

- Open-plan living room/kitchen; Wood floor to living areas
- Modern kitchen with a range of integrated appliances; Gas central heating
- Two double bedrooms with built-in wardrobes; En-suite shower room to master
- Main bathroom with independent shower over the bath
- Secure allocated parking; Communal garden; On-site concierge
- No Pets Allowed; EPC rating B; Furnished; Managed by LANDLORD

*Fees For Assured Periodic Tenancies: when you rent a property from us you will be required to pay a sum equivalent to one weeks' rent for a holding deposit. Upon successful application, this amount will be off set against your first months' rent. You will also be required to pay a security deposit equivalent to 5 weeks' rent which will be held and protected in line with Deposit legislation. For more information about our fees please visit: www.haslams.net
Fees for all other tenancies (Non Housing Act Tenancies / Company Lets): when you rent a property from us we will charge you a one-off fee per property. This charge is the equivalent of 15 days of the monthly rental charge (+VAT) with a minimum fee of £450 (inc.VAT) up to a maximum of £650 (inc.VAT). Other fees may apply depending on your circumstances.

0118 960 1055

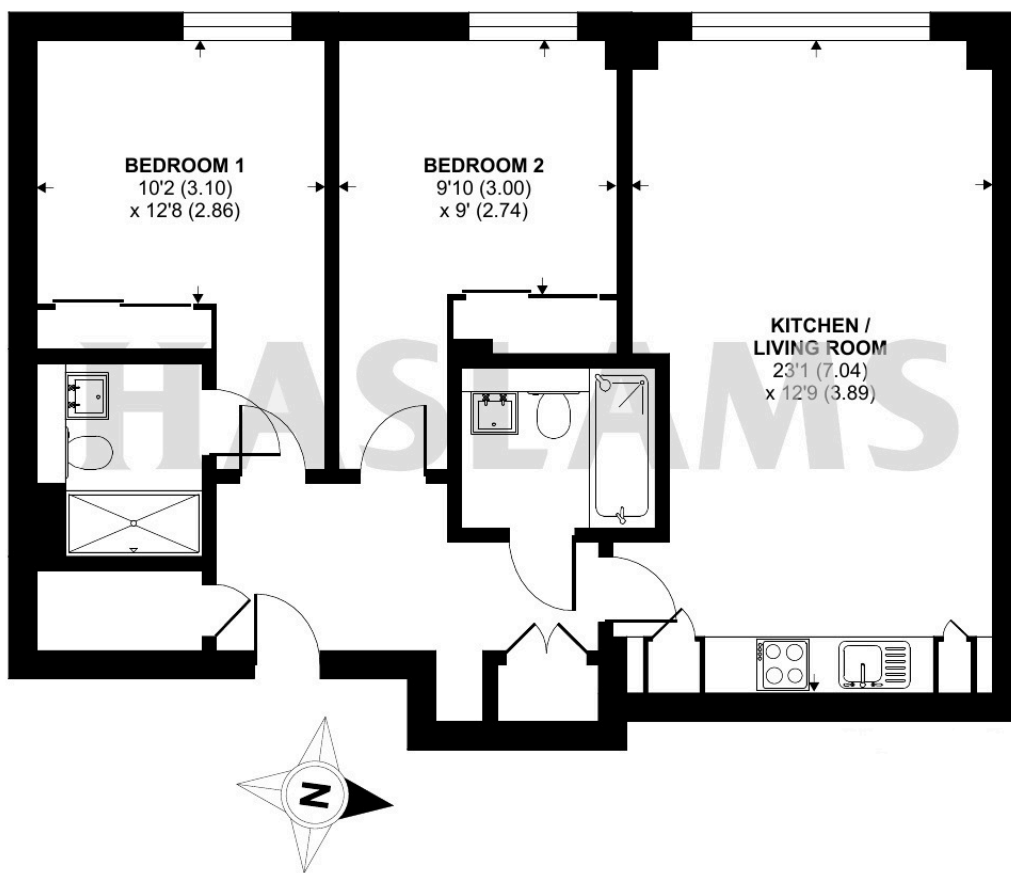
lettings@haslams.net www.haslams.net

Haslams Estate Agents Ltd, 159 Friar Street, Reading, Berkshire, RG1 1HE



Approximate Area = 753 sq ft / 70 sq m

For identification only - Not to scale



 Floor plan produced in accordance with RICS Property Measurement 2nd Edition, Incorporating International Property Measurement Standards (IPMS2 Residential). © n̄checom 2025. Produced for Haslamss. REF: 1228353