



HOPPER HUT DEVELOPMENT

Knowle Lane, Brenchley, Tonbridge, Kent

THE PROPERTY

The Hopper Huts Development comprises a plot of land (circa 0.78 acres to be verified) with approved Planning Permission for the conversion of historical Hopper Huts into a four bedroom residential dwelling. The new property has been designed in a contemporary style with a link between the two buildings, one providing the living space and the other providing bedroom accommodation. Further information can be found on Tunbridge Wells Borough Council's planning portal: www.tunbridgewells.gov.uk Ref: 23/03432/FULL

SITUATION

The development plot is situated on the edge of the popular Wealden village of Brenchley and within the High Weald National Landscape Area. Brenchley offers excellent local amenities for everyday needs. A wider range of facilities can be found at nearby Paddock Wood, including a mainline station with a regular service to London. The larger towns of Tunbridge Wells and Tonbridge have a broader range of restaurants, commercial, shopping and leisure facilities. There are a good number of well-regarded schools in the area including The Schools at Somerhill, Tonbridge School, Holmewood House Preparatory at Langton Green, Kent College (girls) at Pembury and grammar schools in Tonbridge and Tunbridge Wells (girls and boys).

Distances:

Brenchley village 1.4 miles. Paddock Wood mainline station 1.8 miles (London Bridge from 41 minutes). A21 4.1 miles. Tonbridge 7.3 miles (London Bridge from 32 minutes). Tunbridge Wells 8.4 miles. Maidstone 11.2 miles. Sevenoaks 15.4 miles. M25(J5) 18 miles. Rye 27 miles. Gatwick airport 32 miles. London 42 miles. (All times and distances approximate).

INFORMATION

Local Authority: Tunbridge Wells Borough Council | Tel: 01892 562121.

Viewings: Strictly by prior appointment with Knight Frank, LLP

What3Words: www.what3words.com/videos.gladiators.sunset

Agent's Note: All images contained within these particulars are Computer Generated.



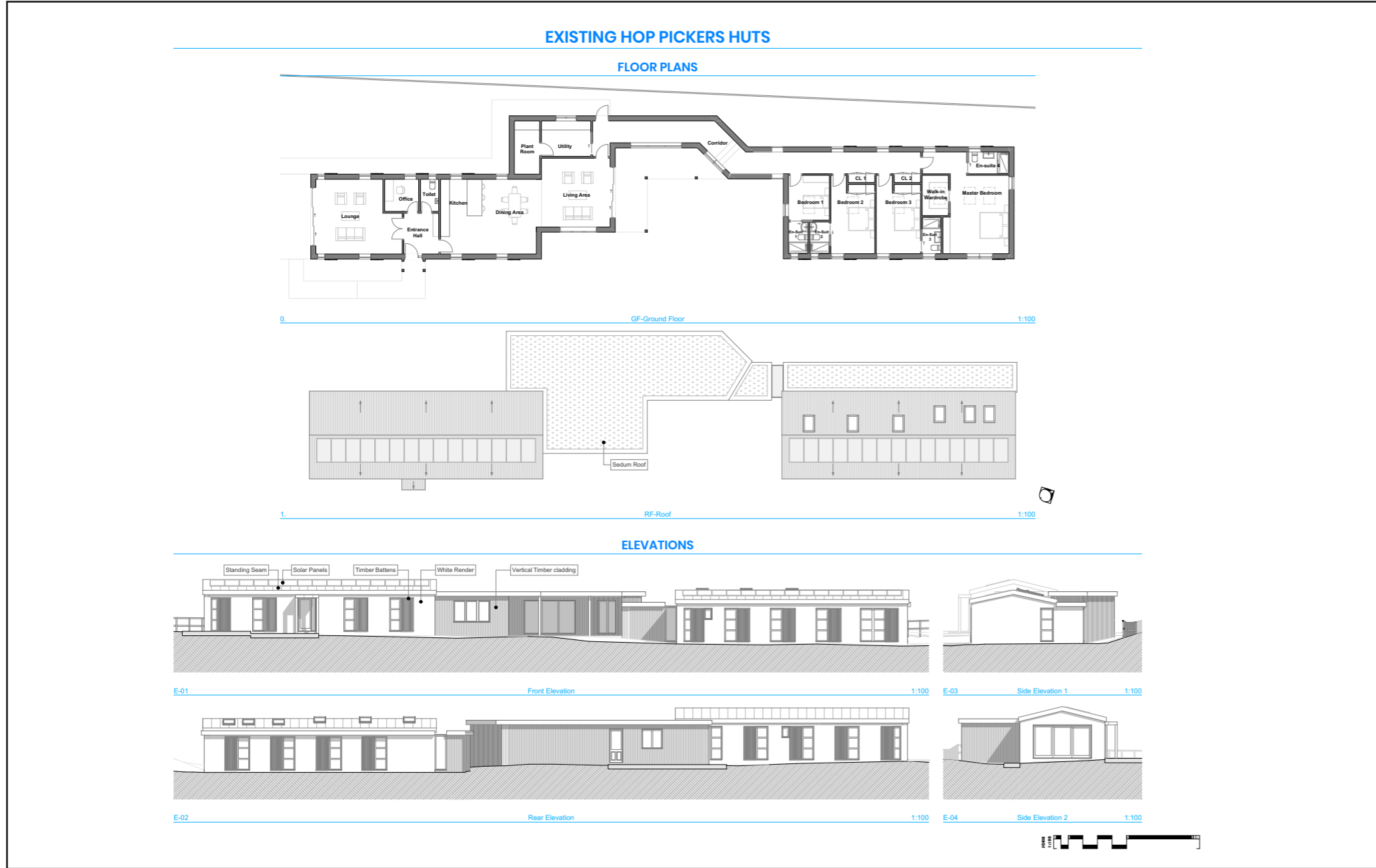
1.1
-



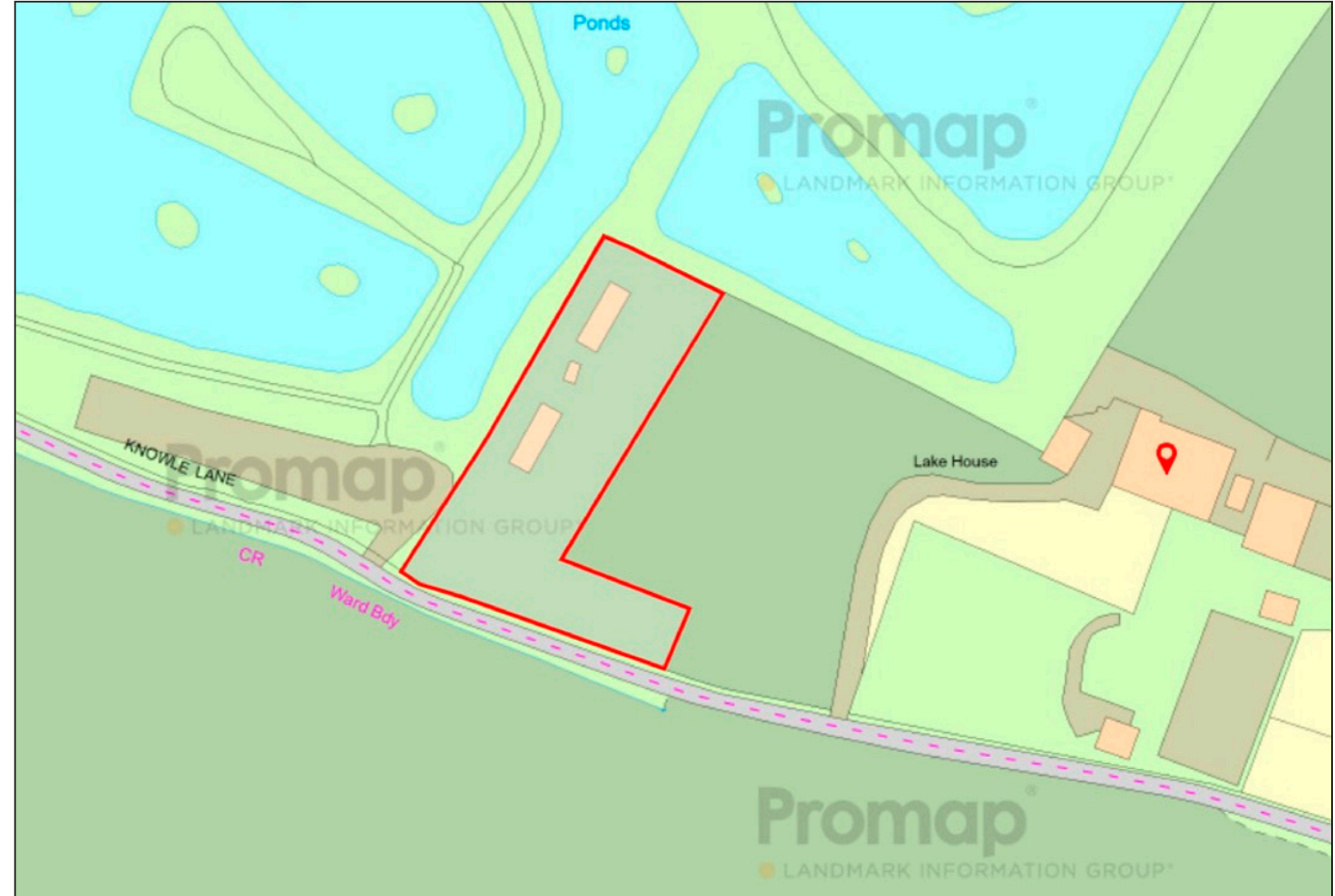
1.2
-



2.2
-



This plan is for layout guidance only. Not drawn to scale unless stated. Windows and door openings are approximate. Whilst every care is taken in the preparation of this plan, please check all dimensions, shapes and compass bearings before making any decisions reliant upon them.



We would be delighted
to tell you more.

Simon Biddulph
01892 772942
simon.biddulph@knightfrank.com

Knight Frank Tunbridge Wells
47 High Street
Tunbridge Wells, TN1 1XL

[knightfrank.co.uk](https://www.knightfrank.co.uk)

Your partners in property

1. Particulars: These particulars are not an offer or contract, nor part of one. You should not rely on statements given by Knight Frank in the particulars, by word of mouth or in writing ("information") as being factually accurate about the property, its condition or its value. Neither Knight Frank nor any joint agent has any authority to make any representations about the property, and accordingly any information given is entirely without responsibility on the part of Knight Frank. 2. Material Information: Please note that the material information is provided to Knight Frank by third parties and is provided here as a guide only. While Knight Frank has taken steps to verify this information, we advise you to confirm the details of any such material information prior to any offer being submitted. If we are informed of changes to this information by the seller or another third party, we will use reasonable endeavours to update this as soon as practical. 3. Photos, Videos etc: The photographs, property videos and virtual viewings etc. show only certain parts of the property as they appeared at the time they were taken. Areas, measurements and distances given are approximate only. 4. Regulations etc: Any reference to alterations to, or use of, any part of the property does not mean that any necessary planning, building regulations or other consent has been obtained. A buyer must find out by inspection or in other ways that these matters have been properly dealt with and that all information is correct. 5. Fixtures and fittings: A list of the fitted carpets, curtains, light fittings and other items fixed to the property which are included in the sale (or may be available by separate negotiation) will be provided by the Seller's Solicitors. 6. VAT: The VAT position relating to the property may change without notice. 7. To find out how we process Personal Data, please refer to our Group Privacy Statement and other notices at <https://www.knightfrank.com/legals/privacy-statement>.

Particulars dated April 2026. All information is correct at the time of going to print. Knight Frank is the trading name of Knight Frank LLP. Knight Frank LLP is a limited liability partnership registered in England and Wales with registered number OC305934. Our registered office is at 55 Baker Street, London W1U 8AN. We use the term 'partner' to refer to a member of Knight Frank LLP, or an employee or consultant. A list of members names of Knight Frank LLP may be inspected at our registered office. If you do not want us to contact you further about our services then please contact us by either calling 020 3544 0692, email to marketing.help@knightfrank.com or post to our UK Residential Marketing Manager at our registered office (above) providing your name and address.