



**Down Place, Hammersmith, W6**

Westworth House | 1 Bedroom Apartment

**£2,225 per month**



LONDON ESTATES



FIRST FLOOR | OPEN PLAN LIVING | FULLY FITTED KITCHEN | PRIVATE TERRACE | CLOSE TO LOCAL AMENITIES | EXCELLENT TRANSPORT LINKS

Available Date: 20<sup>th</sup> August 2026

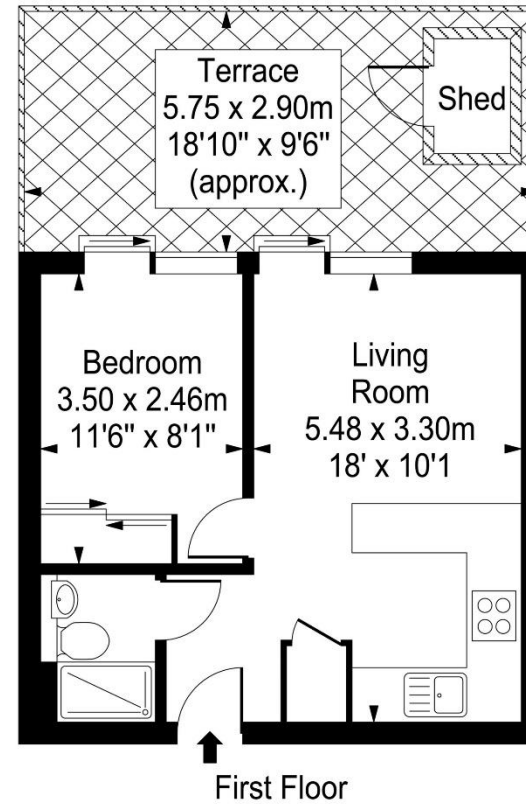
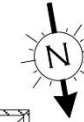
EPC Rating: C | Council Tax Band: D



LONDON ESTATES

## Westworth House

Approx. Gross Internal Area  
32 Sq M - 344 Sq Ft



Every attempt is made to assure accuracy, however measurements are approximate and for illustrative purposes only. Not to scale.  
Floor plan by [www.frameworkphotos.co.uk](http://www.frameworkphotos.co.uk)