



Price
£700,000

Freehold

4x  2x  1x 

**Cobham Road,
Leatherhead, Surrey,
KT22**

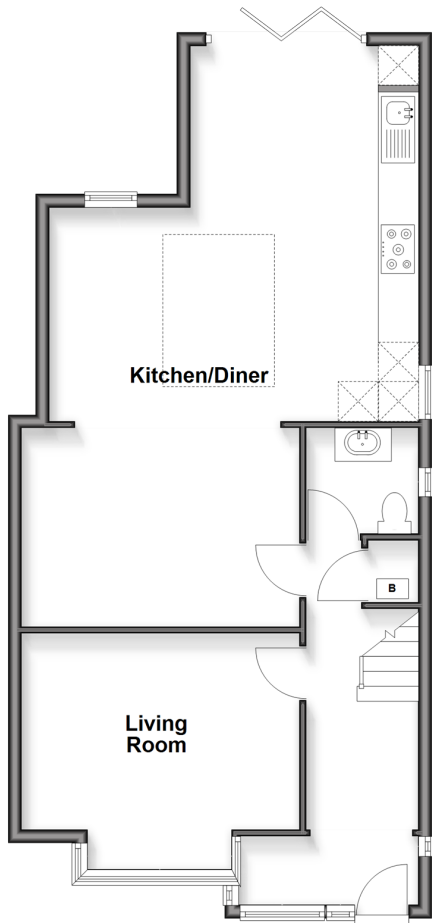
OVER 60?

Secure this property
for up to **59% less!**

cubitt & west
Helping you move forwards

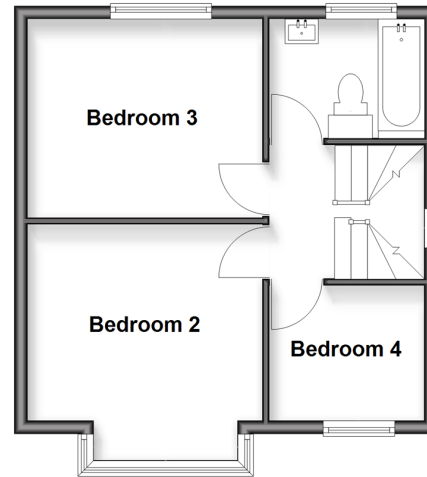
Ground Floor

Approx. 67.4 sq. metres (725.4 sq. feet)



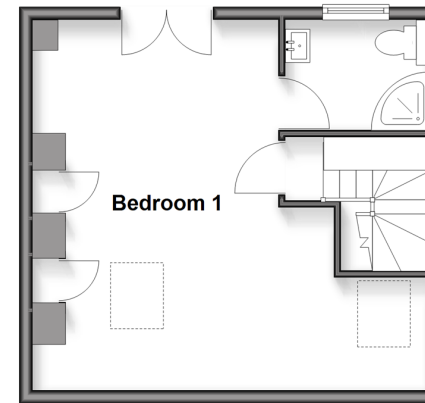
First Floor

Approx. 37.4 sq. metres (402.8 sq. feet)



Second Floor

Approx. 33.3 sq. metres (358.9 sq. feet)



Accommodation

GROUND FLOOR

Entrance Hall

Living Room: 13'8 x 11'9 (4.17m x 3.58m)

Kitchen/Diner: 29'5 x 18'5 (8.97m x 5.62m)

Cloakroom

FIRST FLOOR

Landing

Bedroom 2: 12'4 x 11'7 (3.76m x 3.53m)

Bedroom 3: 11'6 x 9'9 (3.51m x 2.97m)

Bedroom 4: 7'8 x 6'7 (2.34m x 2.01m)

Bathroom

SECOND FLOOR

Landing

Bedroom 1: 18'1 x 13'2 (5.52m x 4.02m)

En-Suite Shower Room

OUTSIDE

Driveway

Rear Garden



Main features

- Beautifully renovated to the highest specification throughout
- Spacious open plan kitchen/diner with bifolds to a large garden
- Close proximity to highly regarded schools
- Ample parking with electric charging point
- Easy access to transport links and town centre



Nearest Schools

Primary Schools: Oakfield Junior School 0.3 miles, Eastwick Junior School 1.0 miles, Leatherhead Trinity School and Children's Centre 1.0 miles

Secondary Schools: Therfield School 1.0 miles, St John's



Transport Information

Train Stations: Leatherhead 0.7 miles, Bookham 1.5 miles, Cobham & Stoke D'Abernon 2.4 miles



Address

Cobham Road, Leatherhead, Surrey, KT22



Directions

For directions to this property please contact us.



cubitt&west
Helping you move forwards

Call Leatherhead Branch 01372 373780 ■ CubittAndWest.Co.Uk



- Legal advice should be taken to verify fixtures/fittings, planning, alterations and/or lease details
- Appliances & services are untested, dimensions are approximate and floor plans are not to scale
- Through a Homewise Home For Life Plan people aged 60+ can secure this property for up to 59% less, by purchasing a Lifetime Lease



21107524/20260314/MB1/JME