



Guide Price
£485,000

Freehold

3x  1x  1x 

**Inglis Road, Southsea,
Hampshire, PO5**

OVER 60?

Secure this property
for up to **59% less!**

cubitt & west
Helping you move forwards



Main features

- **Elegant period home in sought-after location**
- **Split levels adding to its character**
- **No forward chain**
- **Garage to the rear**
- **Modern kitchen and bathroom**

Accommodation

GROUND FLOOR

Entrance Hallway

Lounge/Dining Area: 27'3 x 10'8 (8.31m x 3.25m)

Kitchen/Breakfast Area: 23'0 x 10'6 (7.02m x 3.20m)

FIRST FLOOR

Landing

Bedroom 1: 13'2 x 11'7 (4.02m x 3.53m)

Bedroom 2: 12'9 x 10'8 (3.89m x 3.25m)

Bedroom 3: 9'9 x 7'8 (2.97m x 2.34m)

Bathroom

OUT BUILDING

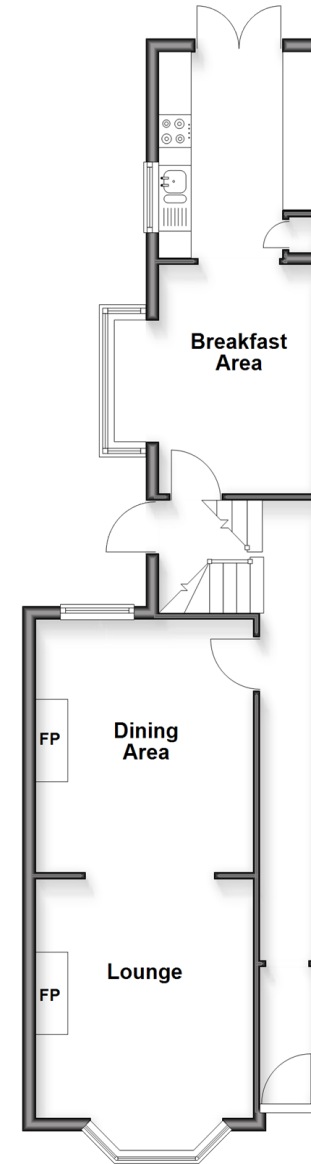
Garage

OUTSIDE

Rear Garden

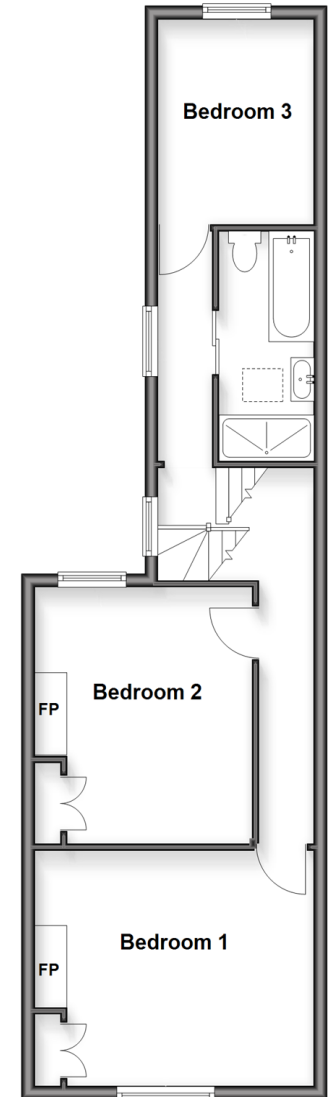
Split Level Ground Floor

Approx. 54.1 sq. metres (582.6 sq. feet)



First Floor

Approx. 53.6 sq. metres (576.6 sq. feet)



Call Southsea - 023 9229 6396 ■ cubittandwest.co.uk

- Legal advice should be taken to verify fixtures/fittings, planning, alterations and/or lease details
- Appliances & services are untested, dimensions are approximate and floor plans are not to scale
- Through a Homewise Home For Life Plan people aged 60+ can secure this property for up to 59% less, by purchasing a Lifetime Lease



42227742/20260309/JT/MO