



Hamlet Road, SE19 | Guide Price £279,000

020 8702 9333

crystalpalace@pedderproperty.com

pedder
We live local



In General

- Light and bright apartment
- Modern separate kitchen
- Large communal garden
- No onward chain
- Close to Crystal Palace station

In Detail

Guide price £279,000 - £299,000

A light and bright one bedroom second floor apartment forming a small low-rise development close to Crystal Palace station.

This neutrally decorated property is an ideal option for a buyer to put their own mark on and immediately enjoy. Highlights include a spacious reception room, a modern kitchen with plenty of storage, a communal garden, and no onward chain.

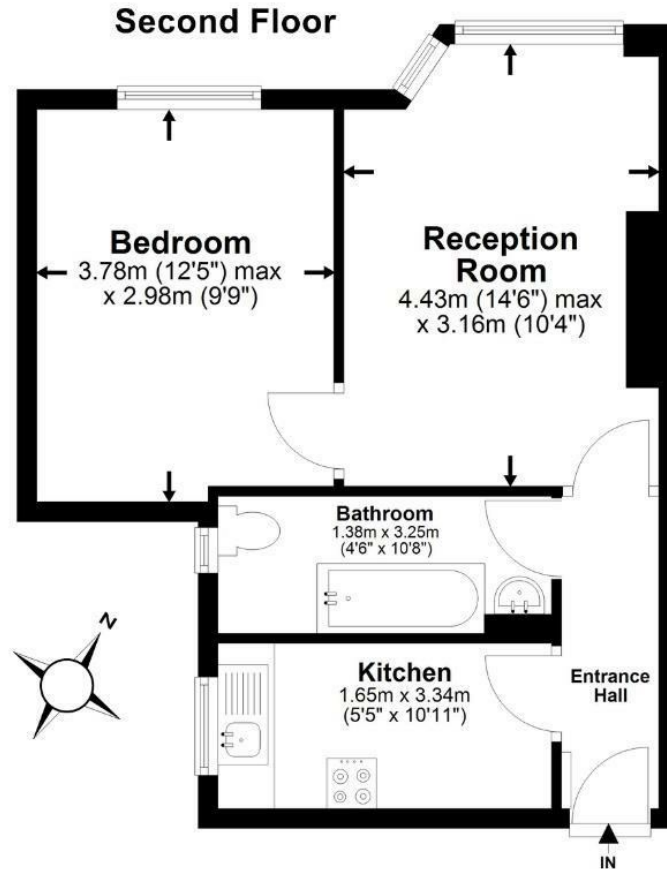
Hamlet Road works well for a multitude shopping and leisure facilities at the Triangle, as well as ease of access to Crystal Palace Park, the station, and the National Sports Centre.

EPC: C | Council Tax Band: B | Lease: 147 Years remaining | SC: £1020pa | GR: £50pa | BI: TBC



Floorplan

Regency Court, SE19
 Total* = 39.5 sq m / 424.9 sq ft
 Second Floor = 39.5 sq m / 424.9 sq ft
 □ = Reduced head room below 1.5m



*All measurements are approximate and do not include eaves space. The plans are for representation purposes only as defined by RICS - 'Code of Measurement Practice'. The plans are not to scale. Please personally check all sizes, dimensions, shapes and compass bearings before making any decisions reliant upon them. Copyright The Pedder Group © 2026.

Energy Efficiency Rating		Current	Potential
Very energy efficient - lower running costs			
102 plus) A			
81-101) B			
69-80) C		74	80
55-68) D			
39-54) E			
21-38) F			
1-20) G			
Not energy efficient - higher running costs			
England & Wales	EU Directive 2002/91/EC		

Pedder Property Ltd trading as Pedder for themselves and for the vendor/landlord of this property whose agents they are, give notice that (1) these particulars do not constitute any part of an offer or contract, (2) all statements contained within these particulars are made without responsibility on the part of Pedder or the vendor/landlord, (3) whilst made in good faith, none of the statements contained within these particulars are to be relied upon as a statement of representation or fact, (4) any intending purchaser/tenant must satisfy him/herself by inspection or otherwise as to the correctness of each of the statements contained within these particulars, (5) the vendor/landlord does not make or give either Pedder or any person in their employment any authority to make or give representation or warranty whatsoever in relation to this property.