



Page Street

£1,995 Per Month

Cosway Estates are pleased to offer for rent this lovely large well-presented two double bedroom ground floor flat in a well sought after development. This property comprises of a large reception room; separate modern fitted kitchen and two brand new bathrooms (one en-suite). This property has well maintained communal gardens and off-street parking. Located within easy access of the shops, restaurants and coffee shops on Mill Hill Broadway and to Mill Hill Thameslink train station and close to Mill Hill Park. AVAILABLE NOW. Viewings highly advised.

Viewing

Please contact our Mill Hill Office on 02089590011 if you wish to arrange a viewing appointment for this property or require further information.



2



2

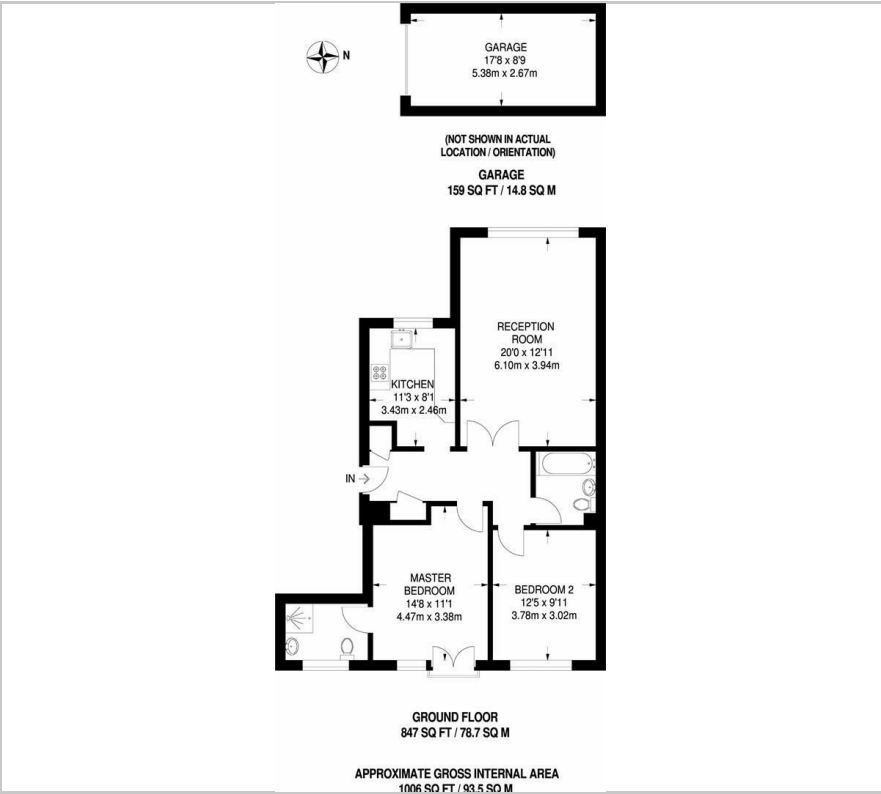


1



C

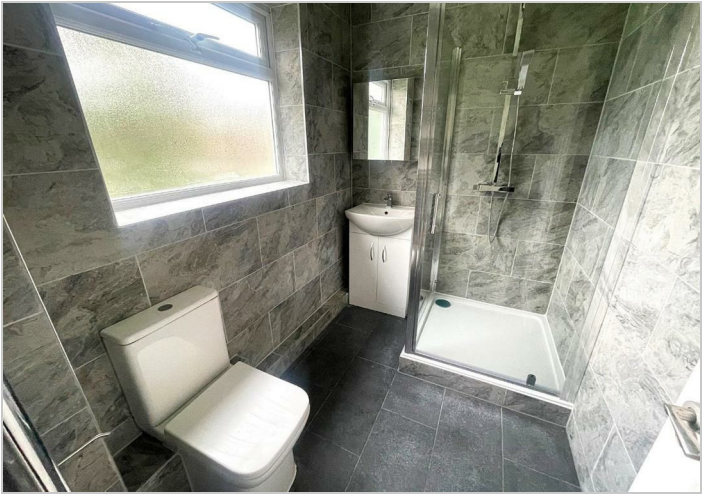
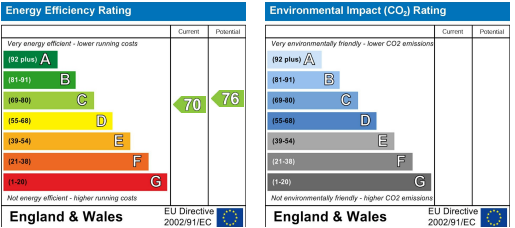
Floor Plan



Area Map



Energy Efficiency Graph



These particulars, whilst believed to be accurate are set out as a general outline only for guidance and do not constitute any part of an offer or contract. Intending purchasers should not rely on them as statements of representation of fact, but must satisfy themselves by inspection or otherwise as to their accuracy. No person in this firms employment has the authority to make or give any representation or warranty in respect of the property.