



Symonds
& Sampson

Corner Cottage

1 West Mead, Bridport, Dorset

Corner Cottage

1 West Mead
Bridport
Dorset DT6 5RU

A beautifully positioned five-bedroom detached family home combining character, space and privacy, moments from the heart of Bridport.



- Popular location close to town centre
- Double garage and gated driveway
 - Countryside walks nearby
 - No onward chain

Guide Price **£650,000**

Freehold

Bridport Sales
01308 422092
bridport@symondsandsampson.co.uk



INTRODUCTION

Tucked away within the sought-after West Mead development, this distinctive thatched home offers over 2,000 sq ft of versatile accommodation, blending traditional charm with practical modern family living.

THE PROPERTY

Behind its attractive façade, the property opens into a spacious and welcoming interior with multiple reception areas, generous bedroom accommodation, and a layout ideally suited to both family life and entertaining. The kitchen and dining spaces form the heart of the home, flowing naturally out towards the private rear garden and terrace – ideal for summer dining, relaxed evenings, and hosting family and friends.

Upstairs, five well-proportioned bedrooms provide flexible accommodation for growing families, home working, or guest space, while the principal suite enjoys a peaceful outlook and excellent natural light.

OUTSIDE

Outside, the property features a double garage, gated

driveway parking, and enclosed gardens that offer privacy and a sense of retreat.

SITUATION

All of this is within easy reach of Bridport's vibrant town centre, excellent local schools, countryside walks, and the Jurassic Coast. Offered chain free, this is a rare opportunity to acquire a substantial character family home in one of Bridport's most desirable residential settings.

DIRECTIONS

[What3Words///shred.daydream.searches](https://www.what3words.com/shred.daydream.searches)

SERVICES

Mains gas, electricity, water and drainage. Gas fired central heating.

Broadband - Superfast broadband is available

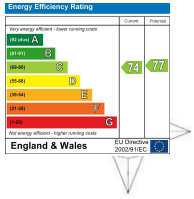
Mobile - There is mobile coverage in the area, please refer to Ofcom's website for more details.

LOCAL AUTHORITY

Dorset Council - 01305 251010

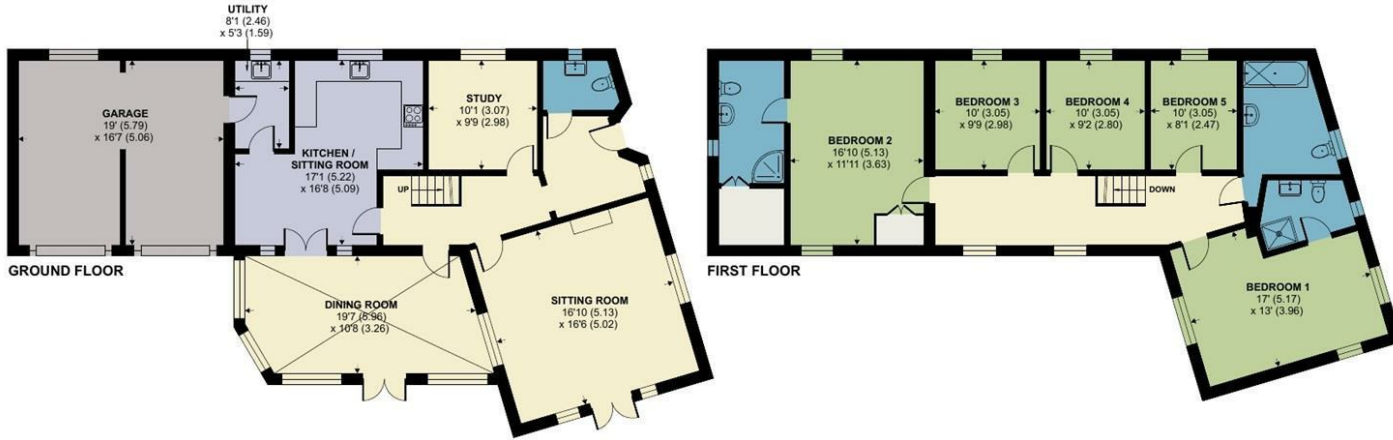
Council Tax Band: F





West Mead, Bridport

Approximate Area = 2239 sq ft / 208 sq m
 Garage = 315 sq ft / 29.2 sq m
 Total = 2554 sq ft / 237.2 sq m
 For identification only - Not to scale



Floor plan produced in accordance with RICS Property Measurement 2nd Edition, Incorporating International Property Measurement Standards (IPMS2 Residential). © nichecom 2026. Produced for Symonds & Sampson. REF: 1422357



Bri/SVA/110226



01308 422092

bridport@symondsandsampson.co.uk
 Symonds & Sampson LLP
 23, South Street,
 Bridport, Dorset DT6 3NU



Important Notice: Symonds & Sampson LLP and their Clients give notice that: 1. They have no authority to make or give any representations or warranties in relation to the property. These particulars do not form part of any offer or contract and must not be relied upon as statements or representations of fact. 2. Any areas, measurements or distances are approximate. The text, photographs and plans are for guidance only and are not necessarily comprehensive. It should not be assumed that the properties have all necessary planning, building regulation or other consents and Symonds and Sampson LLP have not tested any services, equipment of facilities. 3. We have not made any investigation into the existence or otherwise of any issues concerning pollution of the land, air or water contamination and the purchaser is responsible for making his/her own enquiries in this regard. 4. The property is sold subject to and with the benefit of all existing wayleaves, easements and rights of way whether public or private, specifically mentioned or not. The vendors shall not be required to define any such rights, privileges or advantages.

SALES | LETTINGS | AUCTIONS | FARMS & LAND | COMMERCIAL | NEW HOMES | PLANNING & DEVELOPMENT