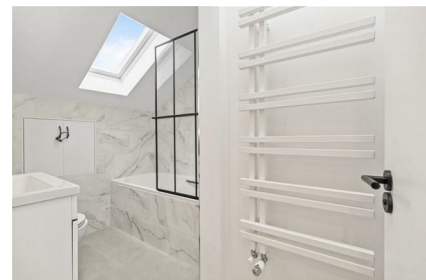


# Parkheath

*Sold on Service*

**Belsize Avenue NW3**  
**£2,650 PCM (£612 per week) - Camden Band B**



Luxurious one double bedroom apartment  
Contemporary styling with herringbone floors  
Good eaves storage  
Perfectly located minutes to Belsize Park tube

Top (3rd) floor in period conversion  
L-shaped reception with sleek open plan kitchen  
Close to Belsize Villages shops and cafes  
EPC: Rating C, Council Tax: Camden band B

Belsize Park Office 020 7431 3104



Belsize Avenue , London, NW6

Approximate Gross Internal Area 52 sqm / 559 sqft



### Third Floor

THIS FLOOR PLAN IS PRODUCED FOR PARKHEATH SUBMITTED BY ARCHIMEDIA web: [www.archi-media.co.uk](http://www.archi-media.co.uk)

Whilst every attempt has been made to ensure the accuracy of the floor plan contained here, measurements of doors, windows and rooms are approximate and no responsibility is taken for any error, omission or misstatement. These plans are for representation purposes only and should be used as such by any prospective buyer or lease. Specifically no guarantee is given on the gross internal floor area of the property if quoted on this plan and any figures given is initial guidance only and should be treated as such.

The particulars do not constitute part of an offer or contract. The particulars, including text, photographs and plans, are for the guidance only of prospective purchasers/tenants and must not be relied upon as statements of fact. The descriptions provided therein represent the opinion of the author and whilst given in good faith should not be construed as statements of fact. Nothing in these particulars shall be deemed a statement that the property is in good condition or otherwise or that any services or facilities are in good working order. All measurements are approximate