



Edith Villas, W14

£340,000

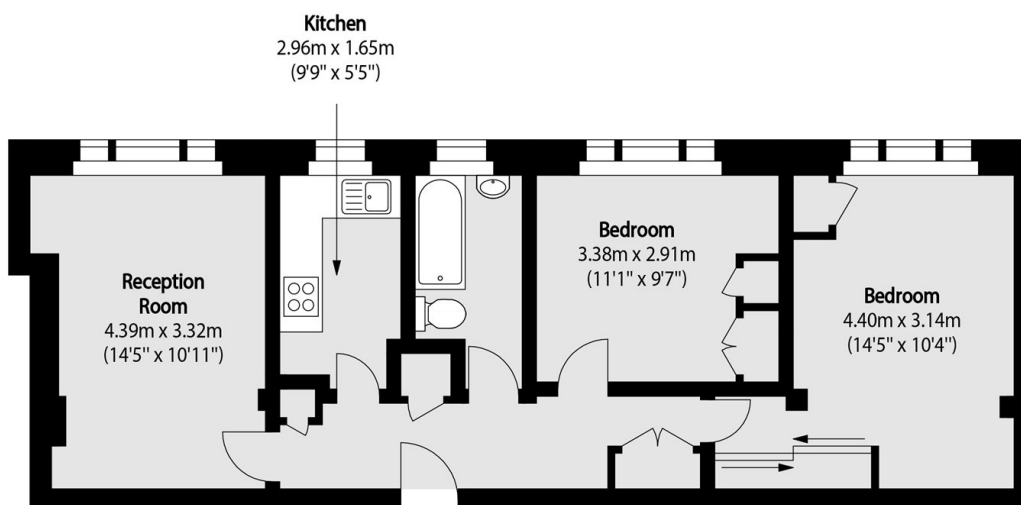
Situated within a purpose built development. This two bedroom apartment in a popular development in West Kensington. The property requires modernisation but would make an ideal investment or first home.

West Kensington Court is conveniently located within two hundred yards to West Kensington underground station. The numerous facilities in Earls Court and Kensington are within a mile.

Features

- Share Of Freehold
- Communal Heating
- Two Bedrooms
- No Chain
- Lift Service
- Spacious

Edith Villas, London, W14



Total area (approx): 59.46 sq m (640 sq. ft)