



## CHELSHAM ROAD, SW4

£595,000

Two double bedrooms  
Victorian conversion flat  
Top floor apartment  
Sibella conservation area  
Quiet residential street  
Energy rating: c

@marshandparsons  
marshandparsons.co.uk

MARSH &  
PARSONS

# ABOUT THE PROPERTY

A bright and spacious two double bedroom property offering in excess of 668 sq ft of living space beautifully arranged over the top floor of a detached Victorian building on a quiet tree-lined residential street. Share of freehold, low service charge & chain free.

Chelsham Road is a popular residential street, ideally positioned for the amenities of Clapham Old Town, Clapham High Street and the open green spaces of Clapham Common. Local transport links include Clapham North Underground Station and Stockwell Underground Station, providing access to both the Northern and Victoria lines.

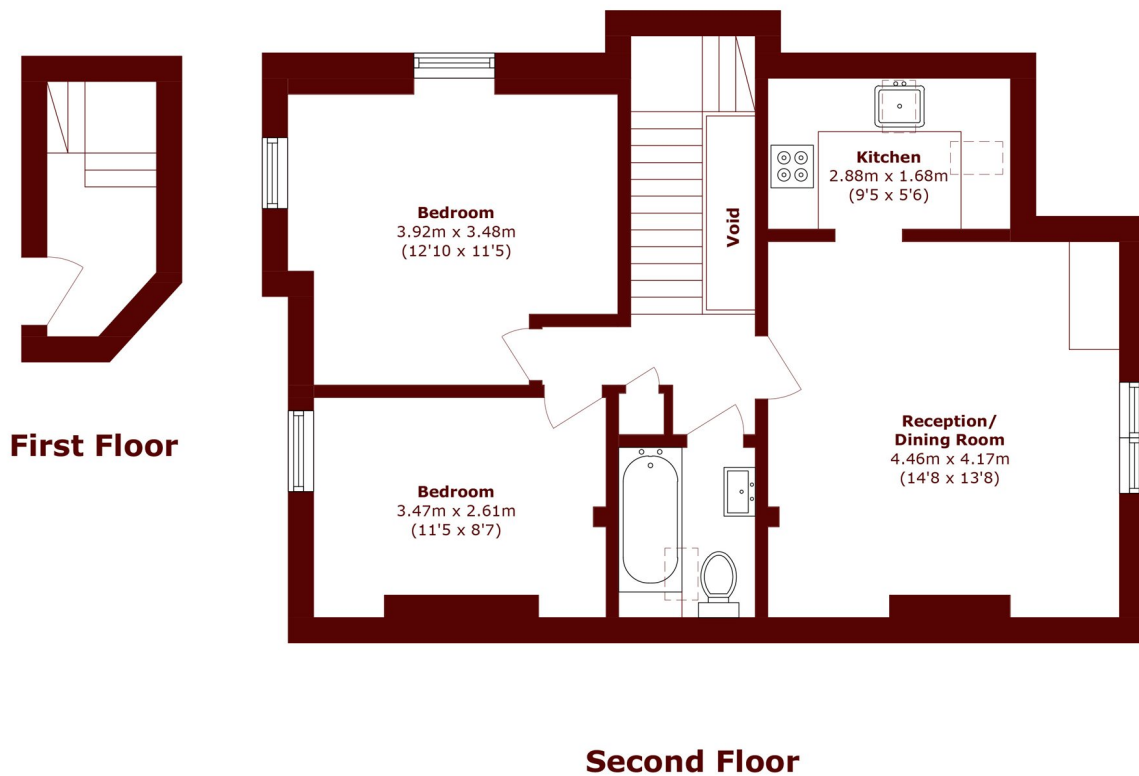








# STEP INSIDE CHELSHAM ROAD



Total area (approx.): 62.1 sq. m (668.4 sq. ft)  
(Excluding Void)

Clapham  
020 7501 3666

Energy Rating: C We aim to make our particulars both accurate and reliable. However, they are not guaranteed; nor do they form part of an offer or contract. If you require clarification on any points then please contact us, especially if you're traveling some distance to view. Please note that appliances and heating systems have not been tested and therefore no warranties can be given as to their good working order

MARSH &  
PARSONS