



The Park, Yeovil, BA20 1DN

welcome to

The Park, Yeovil

A three bedroom detached family home, offered for sale with no onward chain and situated within a prestigious part of Yeovil, close to the Hospital & Town Centre. The accommodation is presented in immaculate decorative order throughout boasting a wealth of space and natural light.



Entrance

Double glazed door to the front, with glass panels either side and storm porch over, entering into:

Entrance Hall

An open and inviting entrance hall with double glazed window to the side. Stairs rising to the first floor. Inset spotlights to the ceiling. Radiator. Door opening into:

Downstairs Cloakroom/ Utility

A range of fitted base units with work surface over. Single bowl stainless steel sink and drainer with mixer tap. Plumbing for washing machine and tumble dryer. WC. Wall mounted Vaillant boiler. Inset spotlights to the ceiling. Extractor fan. Radiator.

Lounge

17' 8" excl bay x 13' 1" (5.38m excl bay x 3.99m)
A lovely light and spacious living area with double glazed box sash window to the front and two further double glazed sash windows to the side. Aerial point. Two radiators.

Fitted Kitchen/ Diner

17' 4" x 11' 3" (5.28m x 3.43m)
A beautiful open plan kitchen/diner with double glazed window to the rear overlooking the garden. A range of fitted base units with work surface over. One and a half bowl sink and drainer with mixer tap. Five ring gas hob with cooker hood over, complementary tiled splashback and electric oven below. Plumbing for dishwasher. Ample space for dining table and chairs, perfect for family meal and entertaining. Pantry cupboard with fitted shelving. Inset spotlights to the ceiling. Radiator. Double glazed French doors to the rear, opening out to the patio.

First Floor Landing

Access to the loft space. Inset spotlights to the ceiling. Radiator.

Bedroom One

15' 1" x 11' 8" (4.60m x 3.56m)
Double glazed window to the rear overlooking the garden. Built in wardrobe with inset spotlight. Space for free standing furniture. Aerial point. Radiator. Door opening into:

En Suite

Double glazed window to the rear.. Suite comprising walk in double shower cubicle, wash hand basin and WC. Shaver point. Inset spotlights to the ceiling. Extractor fan. Radiator.

Bedroom Two

14' 3" x 9' 3" (4.34m x 2.82m)
Double glazed sash window to the front, overlooking the park. Space for free standing furniture. Aerial point. Radiator.

Bedroom Three

10' 9" x 9' 3" (3.28m x 2.82m)
Double glazed sash window to the front, overlooking the park. Space for free standing furniture. Radiator.

Family Bathroom

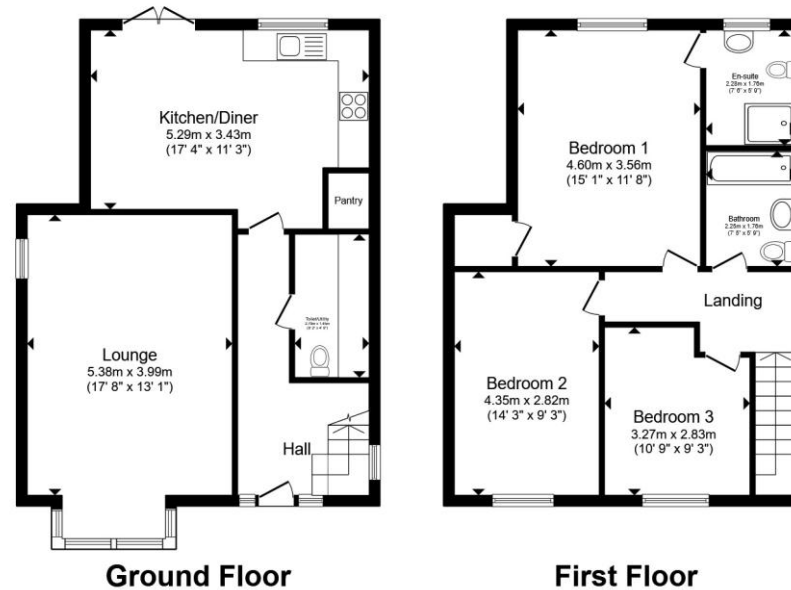
Double glazed sash window to the side. Suite comprising enclosed bath, wash hand basin and WC. Shaver point. Inset spotlights to the ceiling. Extractor fan. Radiator.

Front Garden

Access via a tarmac driveway, leading to the rear garden and providing ample off road parking. The garden is laid to lawn with dwarf hedge borders and paved path leading to the front entrance.

Rear Garden

An extensive fully enclosed rear garden, laid mainly to lawn with a good size patio area abutting the property, providing an ideal seating area to enjoy the summer sunshine and alfresco dining. Outside lighting and water tap. To the foot of the garden is a timber outhouse/workshop with power and light - perfect workshop or home office.



Total floor area 113.2 m² (1,219 sq.ft.) approx

This floor plan is for illustrative purposes only. It is not drawn to scale. Any measurements, floor areas (including any total floor area), openings and orientation are approximate. No details are guaranteed, they cannot be relied upon for any purpose and they do not form part of any agreement. No liability is taken for any error, omission or misstatement. A party must rely upon its own inspection(s). Powered by www.propertybox.io

 fox & sons



view this property online fox-and-sons.co.uk/Property/YEO108282



welcome to

The Park, Yeovil

- Detached Family Home Built in 2022
- Three Double Bedrooms with En Suite to Master
- Spacious Dual Aspect Lounge
- Open Plan Fitted Kitchen/Diner
- Ample Driveway Parking

Tenure: Freehold EPC Rating: B
Council Tax Band: E

offers in excess of

£400,000



Please note the marker reflects the
postcode not the actual property

view this property online fox-and-sons.co.uk/Property/YEO108282



Property Ref:
YEO108282 - 0002

1. MONEY LAUNDERING REGULATIONS Intending purchasers will be asked to produce identification documentation at a later stage and we would ask for your co-operation in order that there is no delay in agreeing the sale. 2. These particulars do not constitute part or all of an offer or contract. 3. The measurements indicated are supplied for guidance only and as such must be considered incorrect. Potential buyers are advised to recheck measurements before committing to any expense. 4. We have not tested any apparatus, equipment, fixtures or services and it is in the buyers interest to check the working condition of any appliances. 5. Where an EPC, or a Home Report (Scotland only) is held for this property, it is available for inspection at the branch by appointment. If you require a printed version of a Home Report, you will need to pay a reasonable production charge reflecting printing and other costs. 6. We are not able to offer an opinion either written or verbal on the content of these reports and this must be obtained from your legal representative. 7. Whilst we take care in preparing these reports, a buyer should ensure that his/her legal representative confirms as soon as possible all matters relating to title including the extent and boundaries of the property and other important matters before exchange of contracts.


fox & sons



01935 412100



Yeovil@fox-and-sons.co.uk



14 Princes Street, YEOVIL, Somerset, BA20 1EW



fox-and-sons.co.uk