



## HEWETT STREET, EC2A

£3,400 pcm

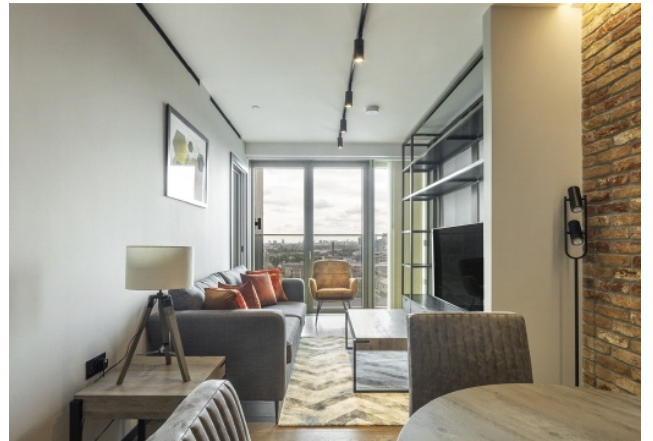
Introducing The Stage, a luxurious living complex located in East London that's set to become a cultural landmark and the first World Heritage Site in the area. Themed around the remains of Shakespeare's Curtain Theatre dating back to 1577, The Stage offers a range of upscale suites, apartments, and penthouses that rise 37 levels high. With world-class interior design

- 1 Bedroom 1 Bathroom
- Fully equipped & Furnished
- Gymnasium
- Residents Screening
- Executive Residents Lounge 24-hour Concierge



## ABOUT THE HOME

8 minute walk from Liverpool Street Station, 2 minutes to Shoreditch High Street





**1 bedroom apartment**



**Approximate gross internal area: 561 sq ft /52 sqm**

Whilst every attempt has been made to ensure the accuracy of the floorplan contained here, measurements of doors, windows, rooms and any other items are approximate. No responsibility is taken for any error, omission, or mis-statement. This plan is for illustrative purposes only and should be used as such by any prospective purchaser. The services, systems and appliances shown have not been tested and no guarantee as to their operability or efficiency can be given.  
© Copyright LiFE Residential 2021.

**LiFE RESIDENTIAL**

71 Drayton Park, London, N5

1BF

Sales: 020 3838 8666

Lettings: 020 7359 4488

Energy Rating: B. We aim to make our particulars both accurate and reliable. However they are not guaranteed; nor do they form part of an offer or contract. If you require clarification on any points then please contact us, especially if you're traveling some distance to view. Please note that appliances and heating systems have not been tested and therefore no warranties can be given as to their good working order.