



Lorne Close, NW8

£600,000

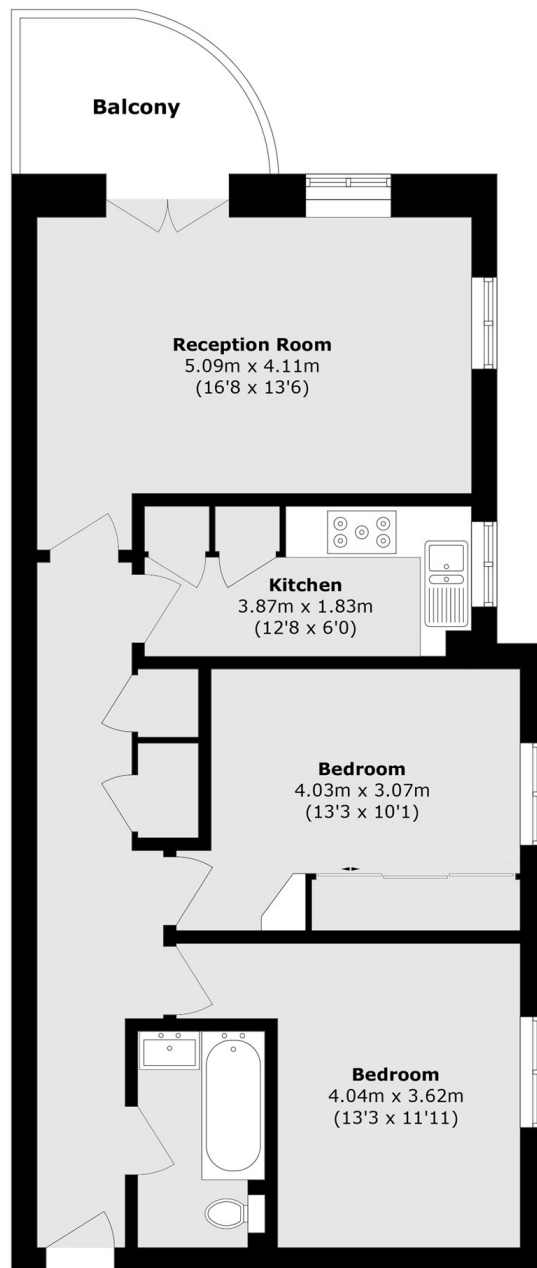
Set within a secure and well maintained building with lift access, this two bedroom apartment offers comfortable living space throughout. The property features a spacious reception room, fully fitted kitchen, private balcony, and is presented in good condition.

Located in the heart of St John's Wood, the property is close to the boutiques, cafés, and restaurants of St John's Wood High Street. Regent's Park and Lord's Cricket Ground are both within easy reach. Transport links include St John's Wood underground station (Jubilee line) and Maida Vale underground station (Bakerloo line).

Features

- Quiet Location
- Close to Transport
- Gated Entry
- Chain Free
- Private Balcony
- Long Lease

Lorne Close, London, NW8



Total area (approx.): 66.4 sq. m (714.7 sq. ft)

Balcony area (approx.): 4.6 sq. m (49.5 sq. ft)