



Heron Close, Bourton-On-The-Water

Fixed Price £239,750



Situated in the popular Bourton Chase development, this charming, large, semi-detached, two bedroom home is arranged over two floors and offers a practical, well-balanced layout ideal for modern living.

Entering through the front door, you are welcomed into a spacious central hallway with stairs rising to the first floor and convenient access to a ground-floor cloakroom, and under stairs storage. Off to the left there is a bright kitchen and dining area with integrated appliances and a patio door opening out onto the garden, providing a sociable space for cooking and everyday meals. Off to the right, from the front door, there is a dual aspect, spacious living room which offers a comfortable area to relax or entertain guests. Upstairs, the property features two generously sized double bedrooms, both offering good natural light and flexible space for furnishings or home working. Completing this floor is the contemporary main bathroom, with bath and overhead shower.

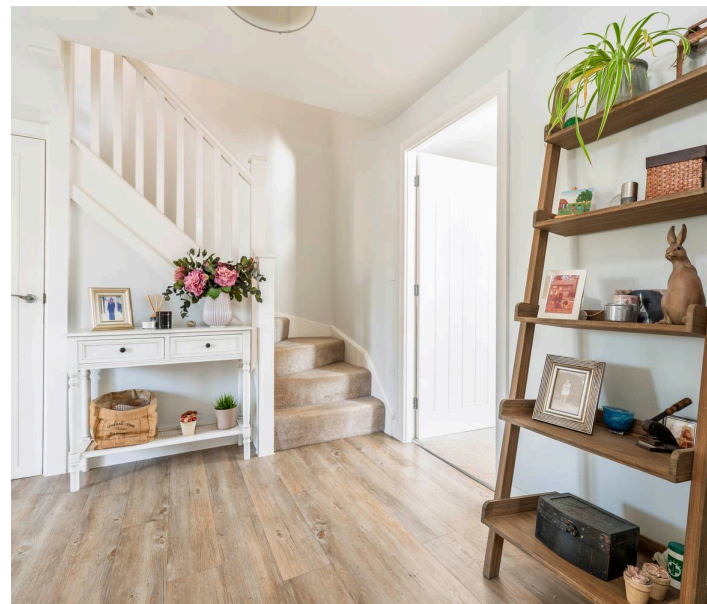
Externally, the property benefits from a low maintenance, landscaped side garden, with patio and gravel areas, raised bedding bordering the garden, and built in seating at the end of the corner, perfect for sitting and enjoying the space. The property further benefits from driveway parking for up to two cars.

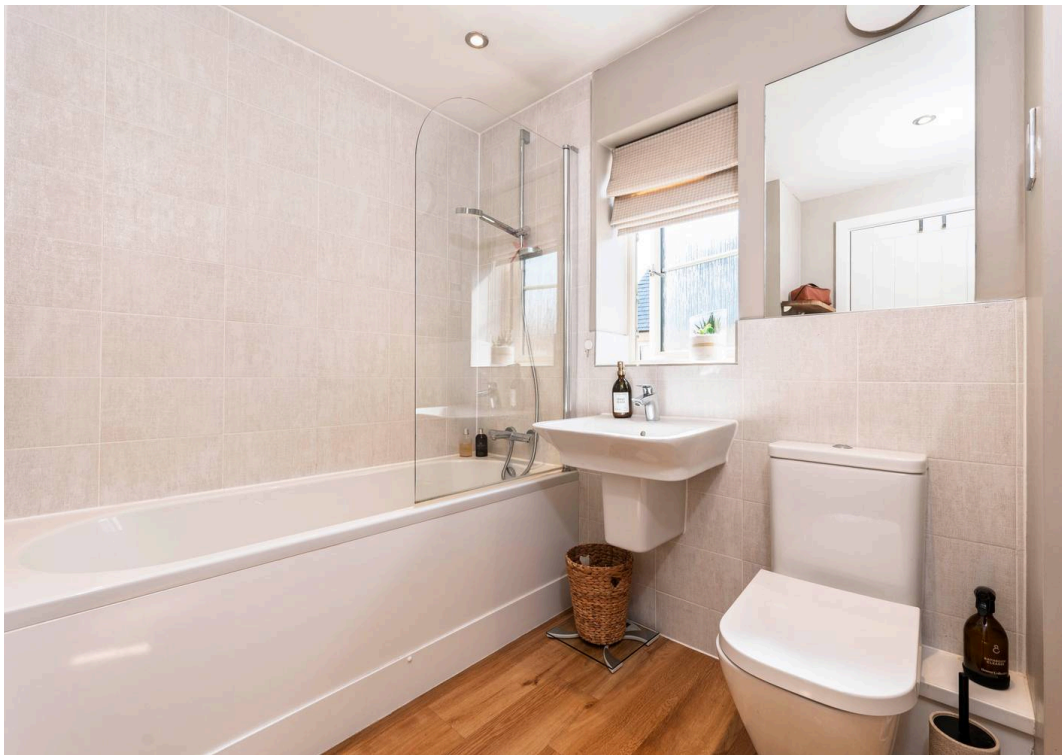
EPC: B

Council Tax Band: C

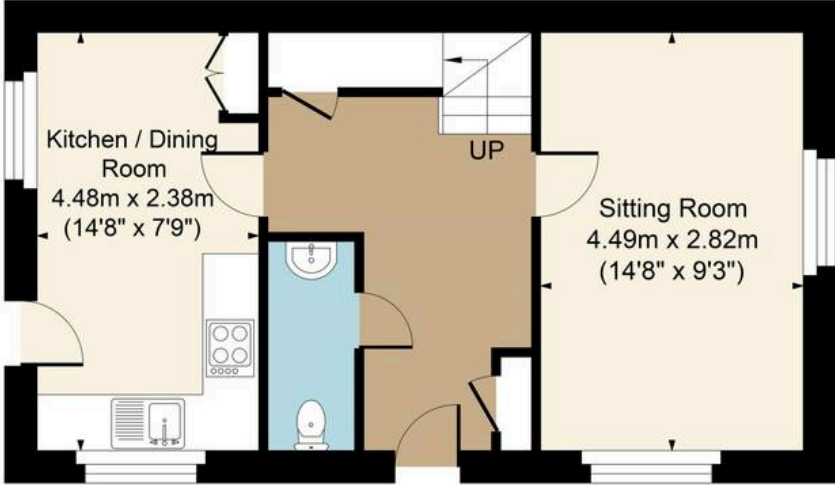
Tenure: Freehold

Property Overview: This property is available to purchase at 70% of the open market value. To qualify for this property, there is a set of pre-defined criteria that applicants/buyers must meet. To meet the Qualifying Criteria, you must be someone in housing need and be unable to buy a home suitable for your housing needs on the open market, in the Council's administrative area.

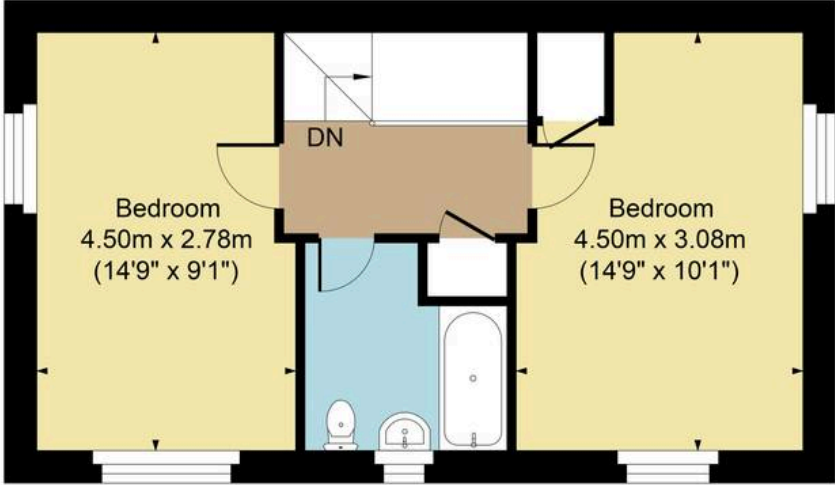




Main House Approx. Gross Internal Area:- 73.91 sq.m. 795 sq.ft.



Ground Floor



First Floor

FOR ILLUSTRATIVE PURPOSES ONLY-NOT TO SCALE
The position & size of doors, windows, appliances and other features are approximate only.
□ □ □ Denotes restricted head height
www.dmlphotography.co.uk