

# 14 RUSHOLME GROVE MANCHESTER

£125 Per Week

Student Accommodation Available 1st July 2026 £125pppw\*

This semi-detached property has been recently renovated and newly decorated with new carpet in each bedroom and re-painted throughout! There are four bedrooms with high quality furniture, a large tiled bathroom on the first floor, an impressive lounge/dining room with laminate flooring, as well as a separate modern fitted kitchen which overlooks the garden. Located a short walk from Wilmslow Road, tenants are close to the famous Curry Mile and all major bus routes into Manchester City Centre and to the universities.

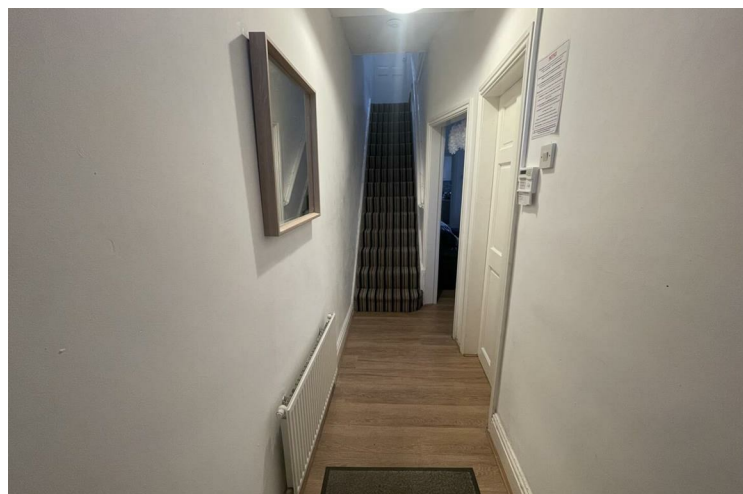
Property Reference: P1508

\*Bills Paid Ltd manage the utilities at the property, their Inclusive Bills Package covers: gas, electric, broadband, water and a TV Licence, for an additional £26pppw (terms and conditions apply).

- 12 month tenancy
- Deposit equivalent to 5x weekly rent
- Holding deposit equivalent to 1x weeks rent due to secure the property, this goes towards the total deposit due
- Rent and utilities calculated per calendar month (not four weeks basis)

Don't miss out, contact the office and quote the property reference above to book your viewing today!

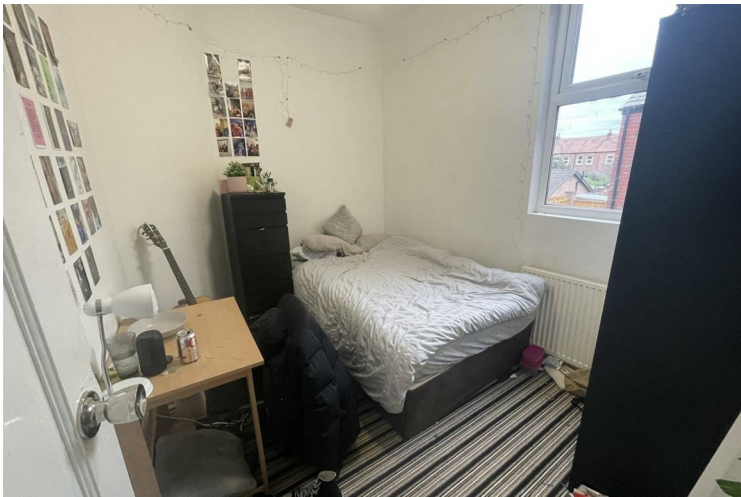
Disclaimer: These particulars are believed to be accurate but they are not guaranteed and do not form a contract. Any images, videos and/or floorplans on this brochure are for guidance purposes only and are not necessarily to scale.






- 4 Bedrooms • House • Rusholme • Fully furnished • 1 Bathroom/shower room • Inclusive Bills
- £26pppw • 24HR cover • Washer/Dryer







Energy Efficiency Rating		
	Current	Potential
<i>Very energy efficient - lower running costs</i>		
(92 plus) <b>A</b>		
(81-91) <b>B</b>		84
(69-80) <b>C</b>		
(55-68) <b>D</b>	55	
(39-54) <b>E</b>		
(21-38) <b>F</b>		
(1-20) <b>G</b>		
<i>Not energy efficient - higher running costs</i>		
<b>England &amp; Wales</b> <small>EU Directive 2002/91/EC</small> 		

**EPC Rating: D     Council Tax Band: B**

Agents Note: Whilst every care has been taken to prepare these particulars, they are for guidance purposes only. All measurements are approximate and are for general guidance purposes only and whilst every care has been taken to ensure their accuracy, they should not be relied upon and potential buyers/tenants are advised to recheck the measurements

Drake & Co  
Anson Parade  
161a Dickenson Road  
Rusholme  
Manchester  
M14 5HZ

0161 224 2134  
info@drakes.co.uk  
<https://www.drakes.co.uk/>

