



2 Stanhope Road, Gedling - NG4 4HP

Guide Price £250,000 - £260,000



2 Stanhope Road

Gedling, Nottingham

GUIDE PRICE £250,000 - £260,000 CORNER PLOT POSITION! Well-presented 3 bed semi, bright lounge, modern dining kitchen, contemporary bathroom, low-maintenance garden plus a multi-vehicle driveway!

Council Tax band: B

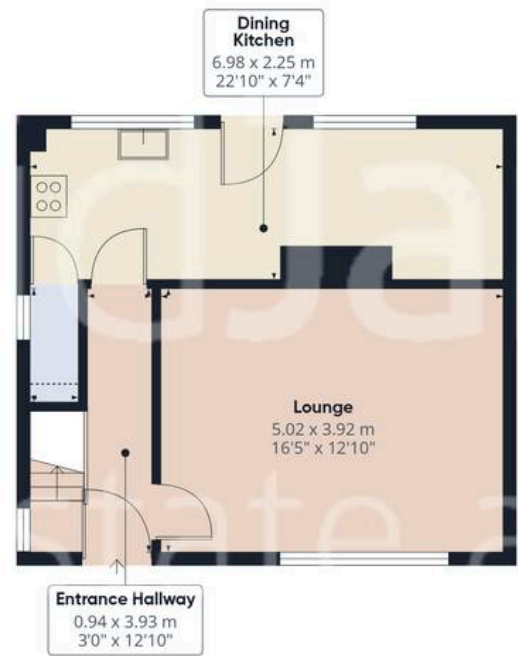
Tenure: Freehold

- Stylishly-presented semi-detached home on a generous plot
- Ideal for families, first-time buyers or those seeking convenient access to local amenities
- Close to a wide range of local shops, schools and public transport links
- Within easy reach of the stunning Gedling Country Park
- Bright and spacious lounge with wood finish flooring and a focal-point fireplace
- Contemporary monochrome dining kitchen with a range of integrated appliances
- Three well-proportioned bedrooms arranged across the first floor
- Modern bathroom with a white three-piece suite and over-bath shower
- Low-maintenance rear garden with lawn and multiple seating areas (including a feature decked terrace)
- Block-paved driveway providing off-street parking for multiple vehicles









Floor 0



Floor 1



Approximate total area⁽¹⁾
82 m²
881 ft²

Reduced headroom
0.2 m²
2 ft²

(1) Excluding balconies and terraces

Reduced headroom
..... Below 1.5 m/5 ft

Calculations reference the RICS IPMS 3C standard. Measurements are approximate and not to scale. This floor plan is intended for illustration only.

GIRAFFE360



David James Estate Agents

David James Estate Agents, 45B Plains Road - NG3 5JU

0115 962 4213 • mapperley@david-james.com • www.david-james.com

These particulars are produced in good faith and are set out as a general guide only. Measurements are approximate and floor plans are for illustrative purposes only. Services have not been tested. We have established professional relationships with third-party suppliers for the provision of services to Clients, details of which can be found on the property listing page on our website.