

**FERMERS**



BY AUCTION

**£110,000**

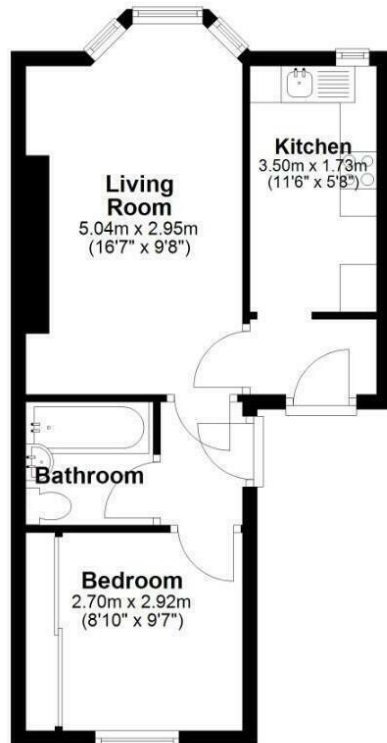
**Lower Rock Gardens**

Brighton, BN2 1PG

EPC RATING: COUNCIL TAX BAND:



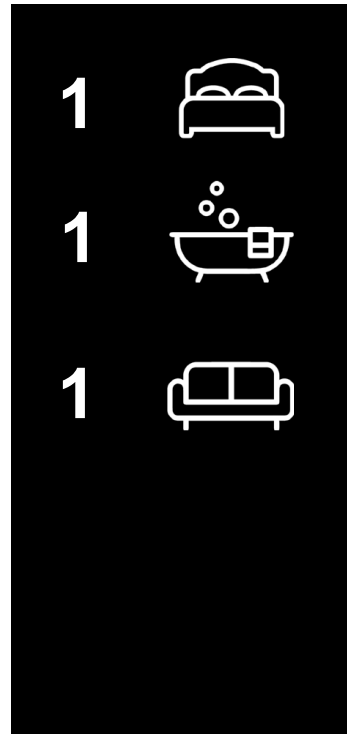
**Second Floor**



Total area: approx. 35.9 sq. metres (386.9 sq. feet)

Whilst every attempt has been made to ensure the accuracy of the floor plan contained here, measurements of doors, windows, rooms and any other items are approximate and no responsibility is taken for any error, omission or mis-statement. This plan is for illustrative purposes only and should be used as such by any prospective purchaser. The services, systems and appliances shown have not been tested and no guarantee as to their operability or efficiency can be given.  
Plan produced using PlanUp.

**Lower Rock Gardens**



Energy Efficiency Rating		Current	Potential
Very energy efficient - lower running costs			
(92 plus) <b>A</b>			
(81-91) <b>B</b>			
(69-80) <b>C</b>			
(55-68) <b>D</b>			
(39-54) <b>E</b>			
(21-38) <b>F</b>			
(1-20) <b>G</b>			
Not energy efficient - higher running costs			
<b>England &amp; Wales</b>		EU Directive 2002/91/EC	



Agents Note: Whilst every care has been taken to prepare these particulars, they are for guidance purposes only. All measurements are approximate and are for general guidance purposes only and whilst every care has been taken to ensure their accuracy, they should not be relied upon and potential buyers/tenants are advised to recheck the measurements

**FERMERS**

**OFFICE ADDRESS**  
67 Queen Victoria Avenue  
Hove  
East Sussex  
BN3 6XA

**OFFICE DETAILS**  
01273 541 177  
sales@fermers.co.uk  
www.Fermers.co.uk