



Kentish Town Road

London, NW1

Guide Price £350,000

A well-proportioned two-bedroom first-floor apartment arranged above a commercial premises on Kentish Town Road. The property features two double bedrooms, a bright kitchen/reception room and a well-appointed bathroom set to the rear of the flat. The property is offered with a long lease and will be sold chain free

CHESTERTONS



Kentish Town Road

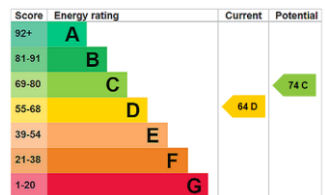
London, NW1

- Two Bedrooms
- Excellent Locations
- Moments both Camden & Kentish Town
- Chain Free
- Long Lease



Located on the borders of Kentish and Camden Town, this fantastic apartment is on the doorstep of both of these engaging and vibrant areas along with the more relaxed charms of Primrose Hill, Hampstead and Kings Cross. The Superb transport link of Kentish Town Northern line Underground and Camden Road Overground are close by offering speedy connections to The City and the West End and the Euro Star.

Tenure: Leasehold with 99 years remaining
Service Charge: £1,078 per annum
Ground Rent: £100 per annum
Local Authority: Camden
Council Tax Band: C

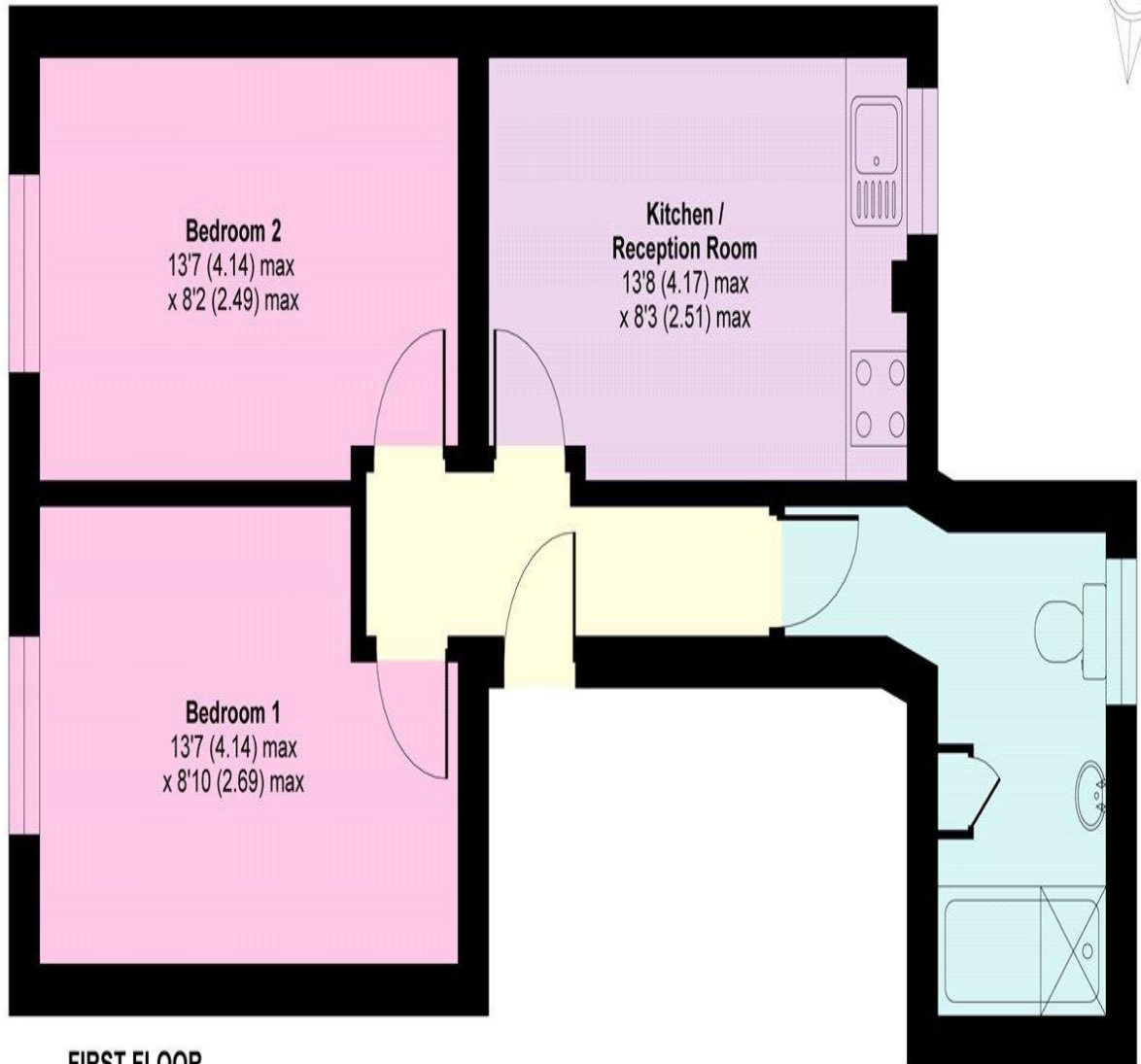


Chestertons Camden & Kentish Town Sales

99-101 Parkway
 Camden
 London
 NW1 7PP
 camden@chestertons.co.uk
 020 7267 2053
 chestertons.co.uk

Kentish Town Road, London, NW1

APPROX. GROSS INTERNAL FLOOR AREA 456 SQ FT 42.3 SQ METRES



FIRST FLOOR
abt 456 SQFT (INTERNAL)

Whilst every attempt has been made to ensure the accuracy of the floor plan contained here, measurements of doors, windows and rooms are approximate and no responsibility is taken for any error, omission or misstatement. These plans are for representation purposes only as defined by RICS Code of Measuring Practice and should be used as such by any prospective purchaser. Specifically no guarantee is given on the total square footage of the property if quoted on this plan. Any figure given is for initial guidance only and should not be relied on as a basis of valuation.

Copyright nichecom.co.uk 2018 Produced for Anthony Pepe REF : 281841

