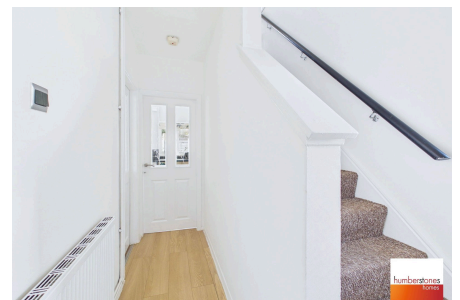


Oldacre Road, Oldbury, B68

Offers In Region Of £240,000



NO UPWARD CHAIN, SUPERB, GOOD SIZED 3 BEDROOMED SEMI DETACHED with LARGE DRIVEWAY provides a **WELL PRESENTED FAMILY HOME**, situated within this **POPULAR LOCATION**. CALL US TO BOOK A VIEWING ASAP. Explore this property with our 360 degree virtual tour.



Key Features

- NO UPWARD CHAIN
- POPULAR LOCATION - DRIVEWAY PROVIDING OFF ROAD PARKING
- MANY SHOPS AND AMENITIES NEARBY
- DOUBLE GLAZED AND GAS CENTRAL HEATING
- COUNCIL TAX BAND A
- SUPERB, GOOD SIZED 3 BEDROOMED SEMI DETACHED FAMILY HOME
- EXPLORE THIS PROPERTY WITH OUR 360 DEGREE VIRTUAL TOUR
- UPSTAIRS FAMILY BATHROOM
- REAR GARDEN- PATIO AND LAWN AREA
- EPC AWAITING

