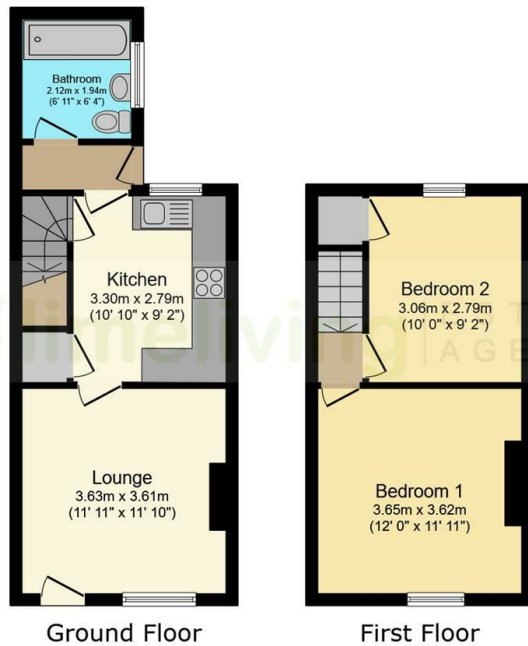




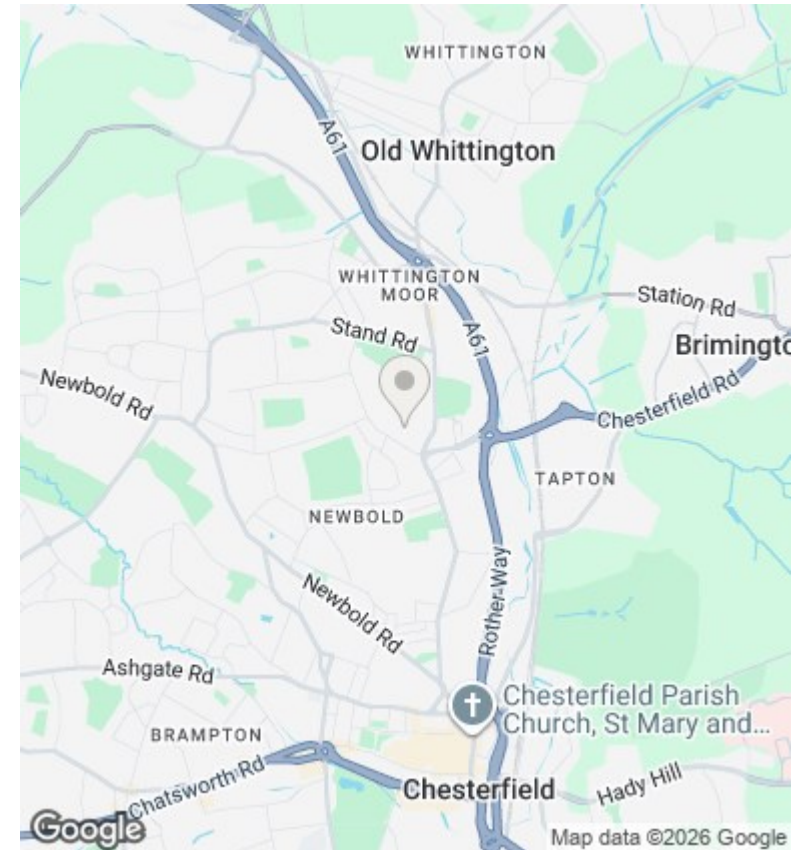
82 Nelson Street, Whittington Moor, Chesterfield, Derbyshire, £750 Per Month

- Terraced House
- Lounge
- TWO Dbl Bedrooms
- UNFURNISHED
- Modernised Throughout
- Modern Fitted Kitchen
- GCH, uPVC D/GI
- Popular Location
- Stylish Downstairs Bathroom
- Rear Garden



Total floor area: 56.8 sq.m. (612 sq.ft.)

This floor plan is for illustrative purposes only. It is not drawn to scale. Any measurements, floor areas (including any total floor area), openings and orientations are approximate. No details are guaranteed, they cannot be relied upon for any purpose and do not form any part of any agreement. No liability is taken for any error, omission or misstatement. A party must rely upon its own inspection(s). Powered by www.Propertybox.io



Directions

Viewings

Viewings by arrangement only. Call 01246 275 559 to make an appointment.

Council Tax Band

A

EPC Rating:

C

Energy Efficiency Rating		Current	Potential
Very energy efficient - lower running costs			
(92 plus)	A		89
(81-91)	B		
(69-80)	C	71	
(55-68)	D		
(39-54)	E		
(21-38)	F		
(1-20)	G		
Not energy efficient - higher running costs			
England & Wales		EU Directive 2002/91/EC	