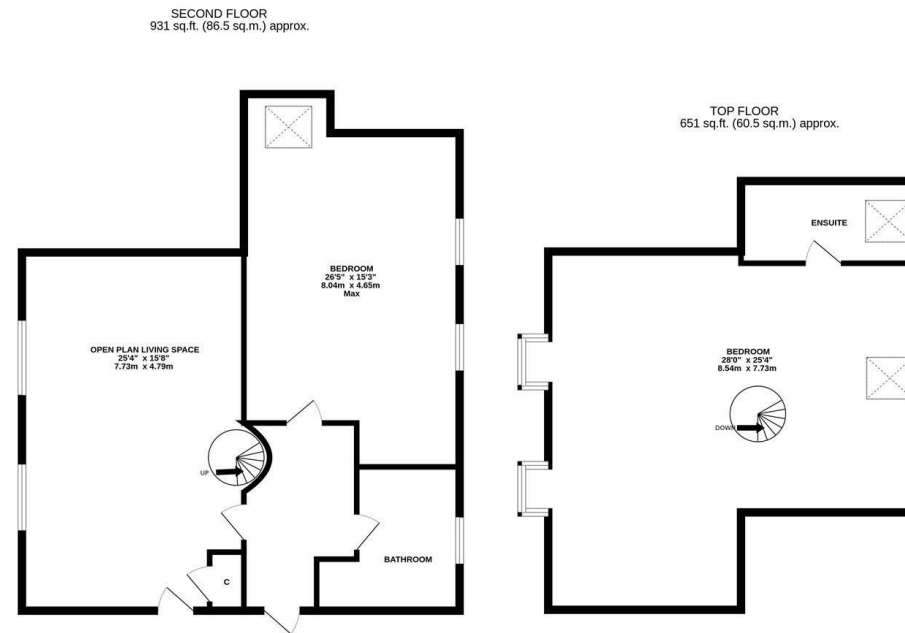




With Open Aspect Views! An excellent opportunity to acquire this second and third floor duplex apartment enviably positioned within Arcade Park, Tynemouth. Perfectly placed within the Tynemouth Village Conservation Area, Arcade Park is within a stone's throw of Tynemouth's historic priory and is also centrally located to everything Tynemouth has to offer including the cafes, bars, restaurants, award winning beaches and transport links including Tynemouth Metro station.

Boasting close to 1,600 Sq ft, the accommodation briefly comprises: communal entrance with stairs to first floor; private entrance hall; a 28ft open plan living with storage cupboard, dual windows, spot lighting, a spiral stairs case leading to the third floor, kitchen area with a range of fitted units, work surfaces and a breakfasting island; bedroom one with spot lighting, dual windows and sky light; bathroom complete with three piece suite. To the third floor, a further bedroom covering the entire footprint of the property with spot lighting, two dormer windows providing open aspect views and a sky light together with an en-suite shower room with three piece suite. Early viewings are essential.

2nd & 3rd Floor Duplex Apartment | 1,582 Sq ft (147.0m²) | Two Double Bedrooms | Open Plan Living Space | Bathroom & En-Suite Shower Room | Open Aspect Views | Excellent Location | Leasehold - 101 Years Remaining | Service Charge £3,300 Per Annum | Ground Rent £100 Per Annum | Council Tax Band D | EPC: Rating C



Offers Over £285,000

IMPORTANT NOTE: These particulars and the descriptions and measurements herein do not constitute representation and whilst every effort has been made to ensure accuracy, this cannot be guaranteed.

