



Portinscale Road

London, SW15

Asking Price £450,000

Bright, spacious, and perfectly positioned close to Putney's vibrant shops and excellent transport links, this chain free two-bedroom flat is situated on the second floor of a well-maintained purpose-built block.

CHESTERTONS



Portinscale Road

London, SW15

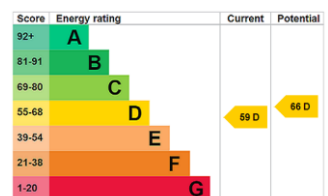
- Two double bedrooms
- Second floor
- Chain free
- 0.2 miles to East Putney
- 0.6 miles to Putney Station



Bright, spacious, and perfectly positioned close to Putney's vibrant shops and excellent transport links, this chain free two-bedroom flat is situated on the second floor of a well-maintained purpose-built block. The accommodation features two double bedrooms, family bathroom, a generously sized reception room with ample space for dining and is complemented by a modern kitchen.

Situated on Portinscale Road, the property is just moments away from Putney town centre's diverse array of shops, restaurants, and leisure amenities. Additionally, the scenic Wandsworth Park on the River Thames is within easy reach, offering a peaceful outdoor retreat. Commuters will appreciate the convenience of nearby East Putney underground station, providing swift connections across London.

Tenure: Leasehold (Expiry: 04/11/2110)
Service Charge: £1,016 p.a.
Ground Rent: Nil
Local Authority: London Borough of Wandsworth
Council Tax Band: D



Chestertons Putney Sales

153 Upper Richmond Road
 London
 SW15 2TX
 putney@chestertons.co.uk
 020 8246 5959
 chestertons.co.uk

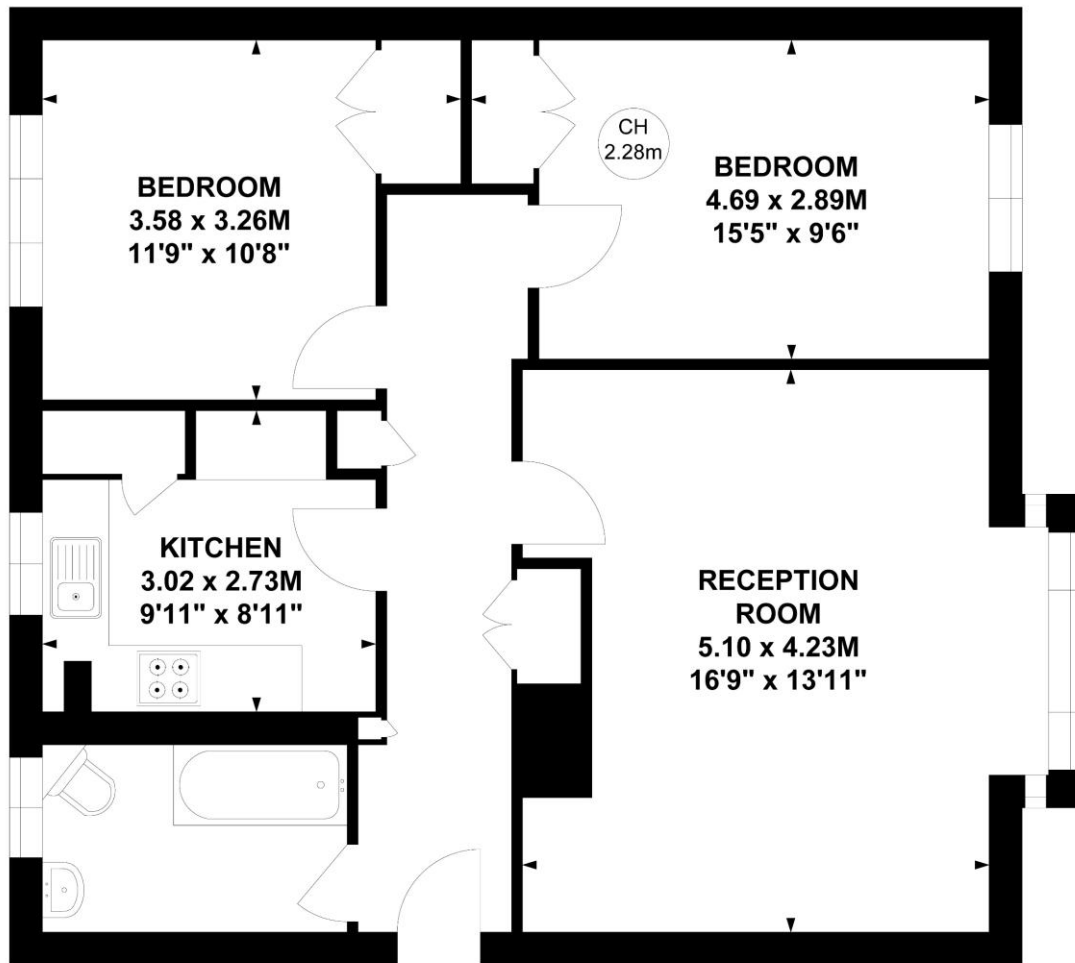
Portinscale Road, SW15

Approximate gross internal area

70.62 sq m / 760 sq ft

Key :

CH - Ceiling Height



Third Floor

Not to scale, for guidance only and must not be relied upon as a statement of fact.

All measurements and areas are approximate only

